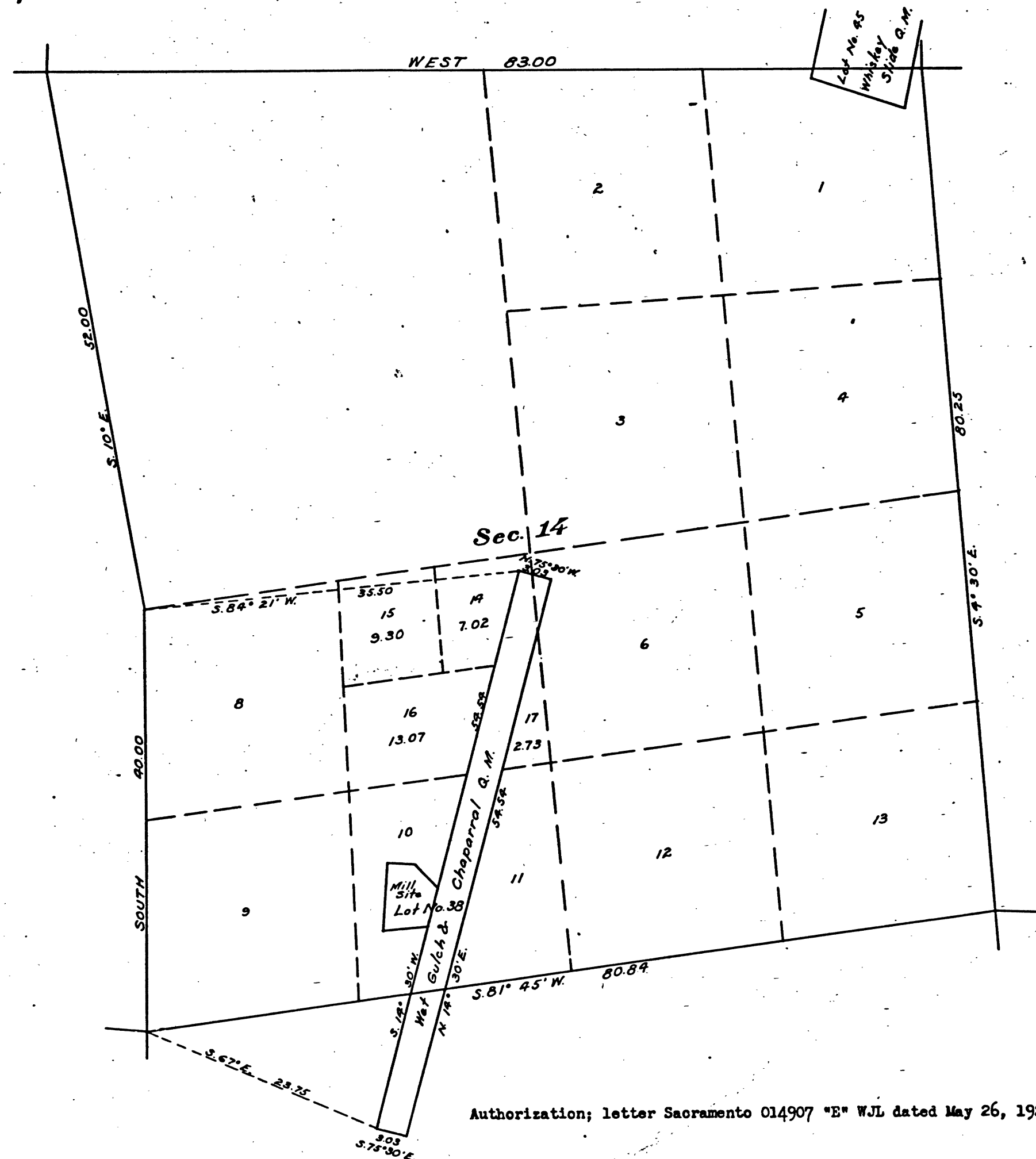


Supplemental Plat of Section 14,
Township N^o 5 North, Range N^o 12 East, Mount Diablo Meridian, California.



Authorization; letter Sacramento 014907 "E" WJL dated May 26, 1924.

This supplemental plat, showing the subdivision of lot 7, section 14, T. 5 N., R. 12 E., M.D.M., California, plat approved February 25, 1890, is made for the purpose of obtaining the area and legal description of the subdivisions thereof, to accommodate timber and stone application Sacramento 014907, and is hereby approved.

U.S. Surveyor General's Office,
San Francisco, California,
July 10, 1924.

John Glover
U.S. Surveyor General for California.

Scale 10 chains to an inch.

XXXXXXXXXXXXXXXXXXXX
XXXXXXXXXXXXXXXXXXXX

Mean Magnetic Declination

The above map of Township No. _____ Range No. _____ of the
Meridian _____ is strictly conformable to the field notes of the survey thereof on file
in this office, which have been examined and approved.

U.S. Surveyor General's Office.

Surveyor General.

41 428

Surveys Designated	By Whom Surveyed	Group		Amount of Surveys			When Surveyed	
		No.	Date	Mls.	chs.	lks.	Begun	Completed

HSP

REGISTER AND RECEIVER RECEIPT

DATED SEP 6 1924

T. 5 N. R. 12 E. MD.

CHAINS

CHAINS

10 20 40 60 80 120

BLM 246