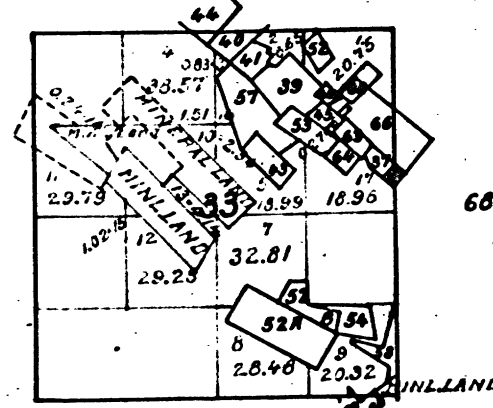


Township N°3 North, Range N°13 East, Mount Diablo Meridian.

T.3 N. R.13 E. M.D.M.



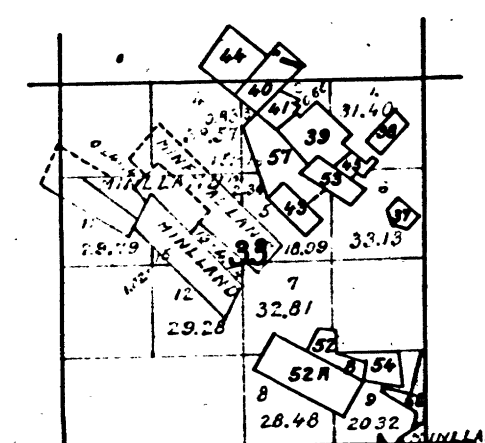
66 Billings Quartz Mine

The above diagram of Sec. 33 Township N°3 North, Range N°13 East, Mount Diablo Meridian, is correctly copied from the original maps amended and on file in this Office.

U.S. Surveyor General's Office,
San Francisco, California
December 1st 1891.

Wm H Pratt
U.S. Sur. Gen'l. Cal.

T.3 N. R.13 E. M.D.M.



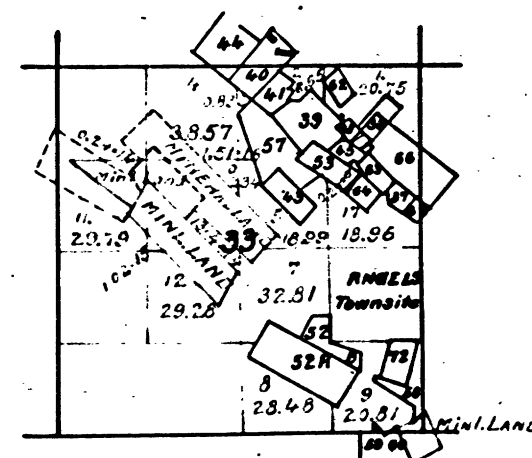
58 Peachy Placer Mine Tract N°1
59 - 2
60 - 2

The above diagram of Sec. 33 Township N°3 North, Range N°13 East, Mount Diablo Meridian, is correctly copied from the original maps amended and on file in this Office.

U.S. Surveyor General's Office,
San Francisco, California,
January 8th 1889.

R.D. Hammond, Jr.
U.S. Sur. Gen'l. Cal.

T.3 N. R.13 E. M.D.M.



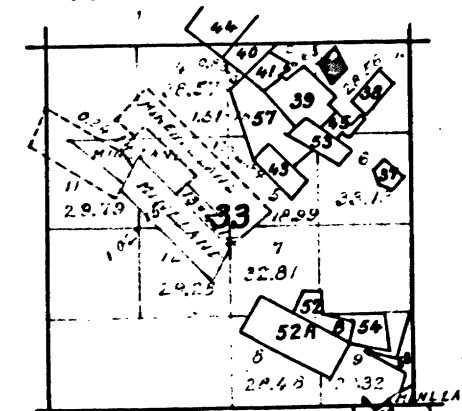
72 Anna Quartz Mine

The above diagram of Sec. 33 Township N°3 North, Range N°13 East, Mount Diablo Meridian, is correctly copied from the original maps amended and on file in this Office.

U.S. Surveyor General's Office,
San Francisco, California
January 7th 1893

Wm H Pratt
U.S. Sur. Gen'l. Cal.

T.3 N. R.13 E. M.D.M.



62 Duffy Quartz Mine - Located 1866

The above diagram of Sec. 33 Township N°3 North, Range N°13 East, Mount Diablo Meridian, is correctly copied from the original maps amended and on file in this Office.

U.S. Surveyor General's Office,
San Francisco, California
May 26th 1891.

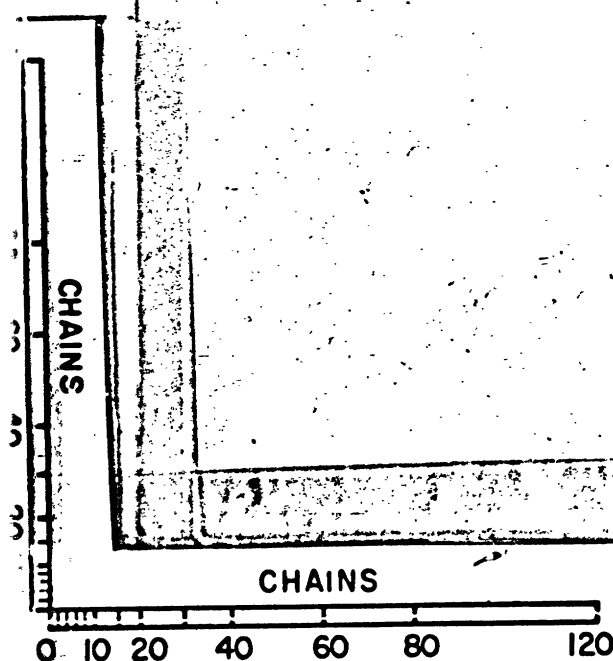
Wm H Pratt
U.S. Sur. Gen'l. Cal.

DEPARTMENT OF THE INTERIOR,
GENERAL LAND OFFICE,
Washington, D. C. Feb. 5, 1903.
I hereby certify that this is a true copy
of the plat of official survey of the lands
to which it relates, on file in this office.

R. D. Hammond, Jr.
Recorder, General Land Office.

41 243

T 3 N R 13 E M D



BLM 110