

EXTERIOR FINISH SCHEDULE

INSTALLED AND FURNISHED BY: G.C. UNLESS NOTED OTHERWISE

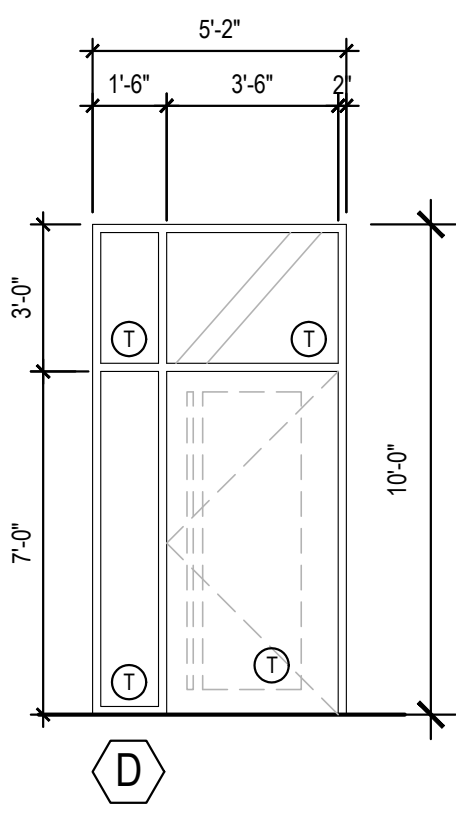
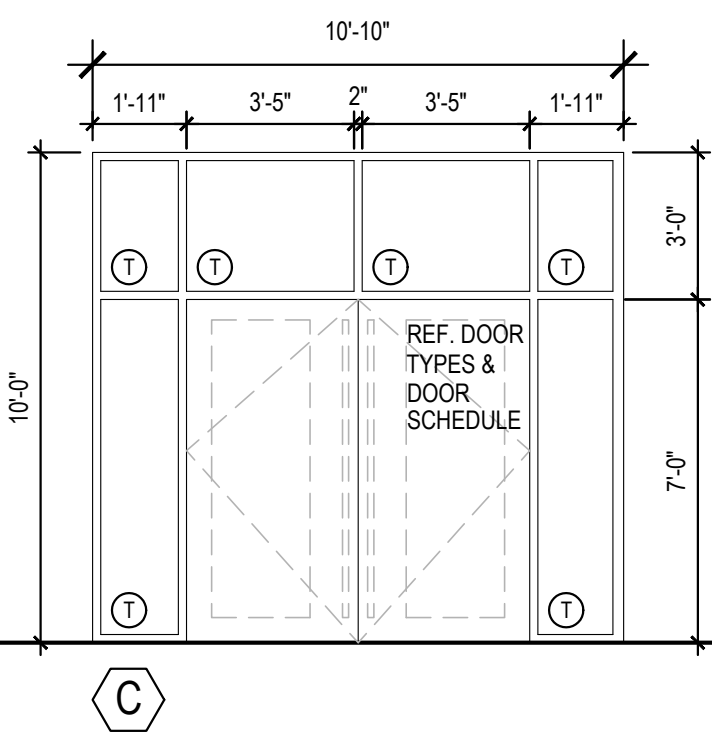
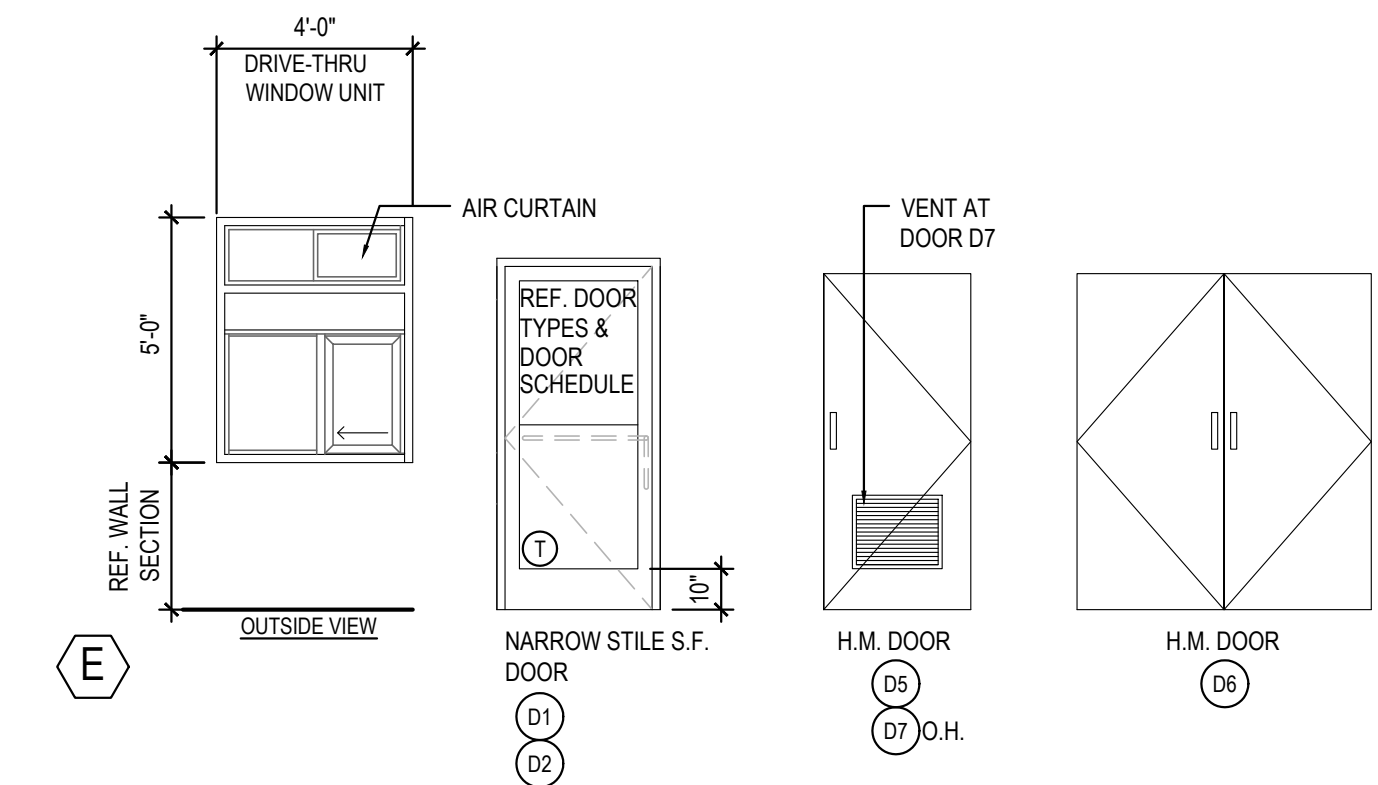
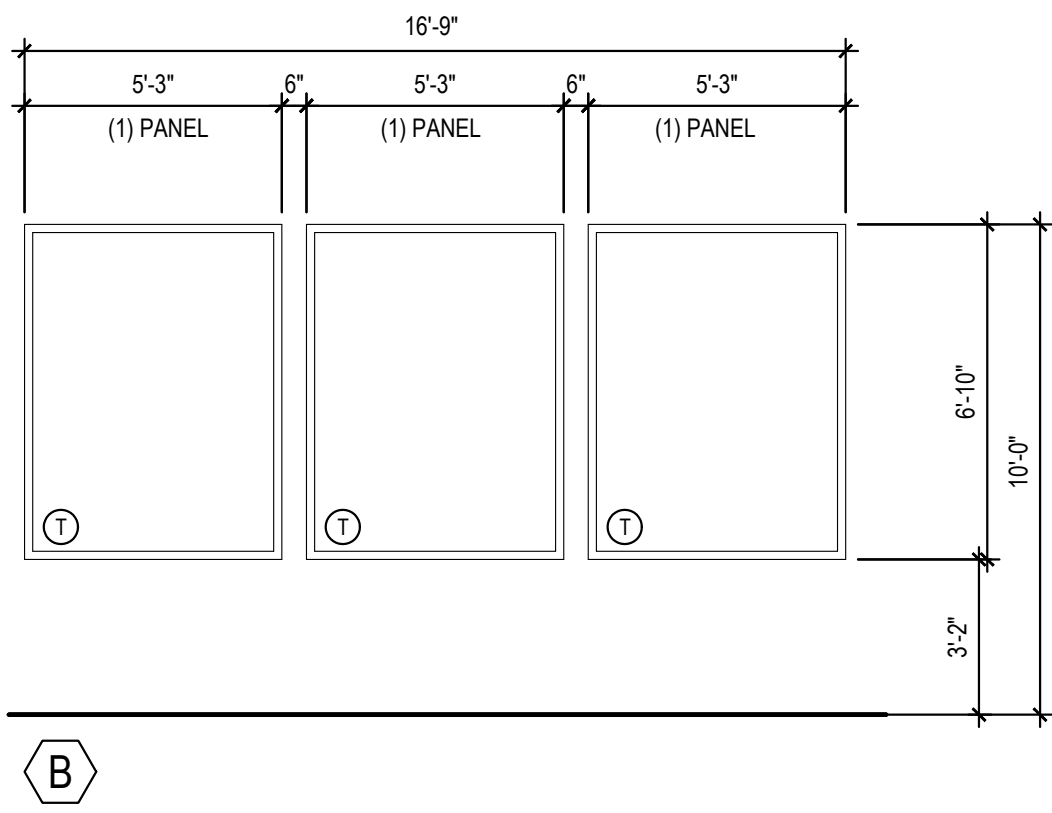
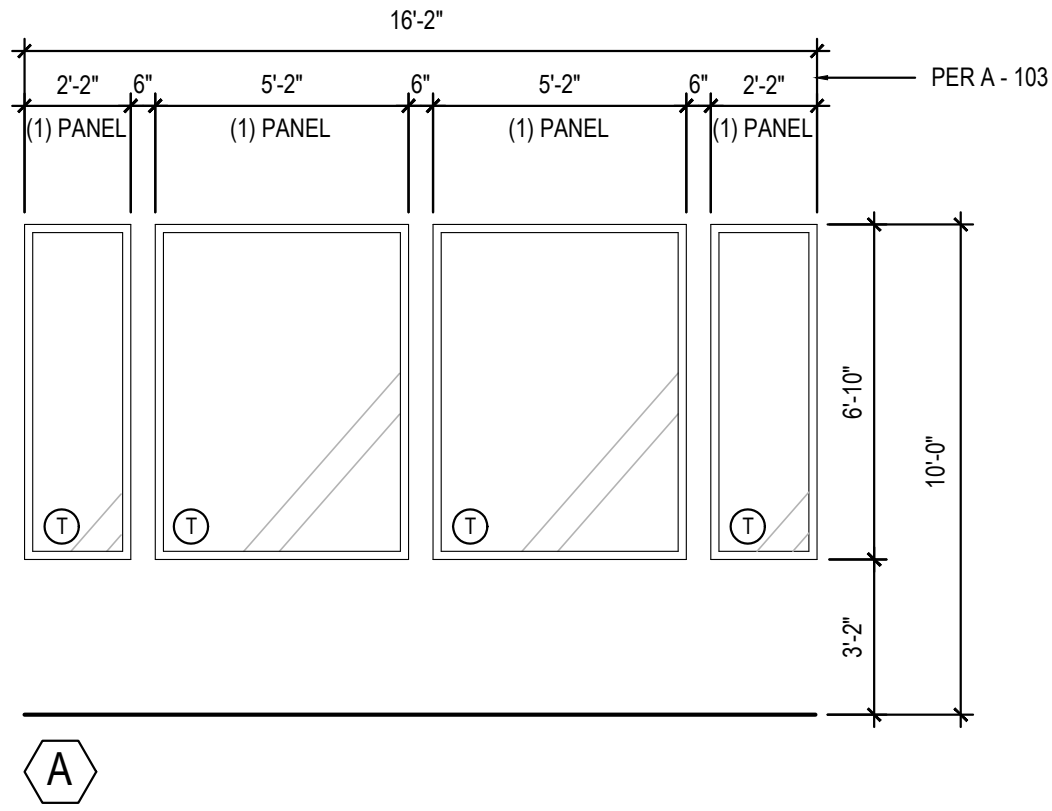
03-08-22

NO	MANUFACTURER	MFG#	COLOR	FINISH	NOTES
(EIFS-1)	STO	STOTHERM ESSENCE SYSTEM	SW 7646 FIRST STAR	FINE	BUILDING BODY
(EIFS-2)	STO	STOTHERM ESSENCE SYSTEM	SW 7069 IRON ORE	FINE	EIFS ACCENT BAND
(EIFS-3)	STO	STOTHERM ESSENCE SYSTEM	PANTONE COLOR 200C - RED	-	EIFS BEHIND TRELLIS
(ST-1S)	CORONADO STONE PRODUCTS	CHISELED STONE SILL	CHARCOAL	-	STONE CAP (3/8" VERTICAL JOINT - MORTAR TO MATCH STONE CAP)
(ST-1)	CORONADO STONE PRODUCTS	STRIP STONE	BLACK FOREST	-	WAINSCOT CONTACT: 864-962-1221 PROVIDE 3/8" MORTAR JOINTS. MFG: ARGOS, COLOR: CHARCOAL
(CD-1)	FIBERON	WILDWOOD	BAMBOO	-	COMPOSITE CLADDING - CONTACT: MARIA SCHOLLER 419-704-5924 EMAIL: maria.scholler@fiberoncladding.com
(MTL-2)	PANDA VENDOR	ALLEN INDUSTRIES	PMS BLACK-7C	SATIN FINISH	CANOPY W/ LED W/ DOWN LIGHT AROUND BUILDING
(MTL-1)	EXCEPTIONAL METALS	-	"PANDA EXPRESS IRON ORE"	-	CAP FLASHING

WINDOW SCHEDULE

INSTALLED AND FURNISHED BY: G.C. UNLESS NOTED OTHERWISE

SYM	WIDTH	HEIGHT	GLASS	FRAME	REMARKS	NOTES
(A)	16'-2" LIN. FEET	6'-10"	1" INSULATED GLASS	BLACK ANOD. ALUMINUM STOREFRONT	1" INSULATED GLAZING, IN 4.5" X 2" IN ANODIZED ALUMINUM FRAME REFER WINDOW TYPES FOR INDIVIDUAL SIZES	1. INSULATING GLASS SOLARBAN 60 LOW E: WINTER U=0.29 SHGC: 0.25 VIS TRANS: 35% 2. DOORS: FULL GLAZED DOORS W/10" KICK BASE, ANODIZED ALUM. FINISH. REFER HARDWARE SCHEDULE.
(B)	16'-9" LIN. FEET	6'-10"	1" INSULATED GLASS	BLACK ANOD. ALUMINUM STOREFRONT	1" INSULATED GLAZING, IN 4.5" X 2" IN ANODIZED ALUMINUM FRAME REFER WINDOW TYPES FOR INDIVIDUAL SIZES	3. WINDOW DIMENSIONS ARE FOR BIDDING PURPOSES ONLY. G.C. TO VERIFY ACTUAL WINDOW DIMENSIONS PRIOR TO FABRICATION INSTALLATION.
(C)	10'-10"	10'-0"	1" INSULATED GLASS	BLACK ANOD. ALUMINUM STOREFRONT	KAWNEER CURTAIN WALL 1620 SYSTEM WITH 1" INSULATED GLAZING, IN 6" X 2" IN ANODIZED ALUMINUM FRAME MOON GATE TO CONNECT WITH KAWNEER ATTACHMENT BRACKET 834-745.	4. GLASS FACADE AND ENTRY DOORS TO BE DESIGNED, DETAILED, FACTORY FABRICATED AND SITE ASSEMBLED AND ERECTED.
(D)	5'-2"	10'-0"	1" INSULATED GLASS	BLACK ALUMINUM STOREFRONT	KAWNEER CURTAIN WALL 1620 SYSTEM WITH 1" INSULATED GLAZING, IN 6" X 2" IN ANODIZED ALUMINUM FRAME MOON GATE TO CONNECT WITH KAWNEER ATTACHMENT BRACKET 834-745.	5. MANUFACTURER: QUIK-SERV, MODEL SST-4860E WITH THRU-BEAM PHOTO-ELECTRIC BAR. REGIONAL APPLICATION WITH QUIK-SERV HEATED: AIR CURTAIN LISTED ON WINDOW SCHEDULE.
(E)	4'-0"	59.5"	TEMPERED GLASS	BLACK ANODIZED ALUMINUM	QUIK-SERV (NON-HEATED AIR CURTAIN OR HEATED AIR CURTAIN), ROUGH OPENING 83" X 60" SEE ADDITIONAL NOTE # 5. CONTACT: WADE ARNOLD, 800-388-8307	6. WINDOW SYSTEM SHALL COMPLY WITH APPLICABLE SECTION AND CHAPTER OF BUILDING CODE. ① TEMPERED GLASS



WINDOW AND DOOR ELEVATIONS

3

Scale= NTS A-200

- PEAK
23'-3" +/- A.F.F.
- T.O. PARAPET
21'-8" A.F.F.
- T.O. EAVE
19'-5" +/- A.F.F.

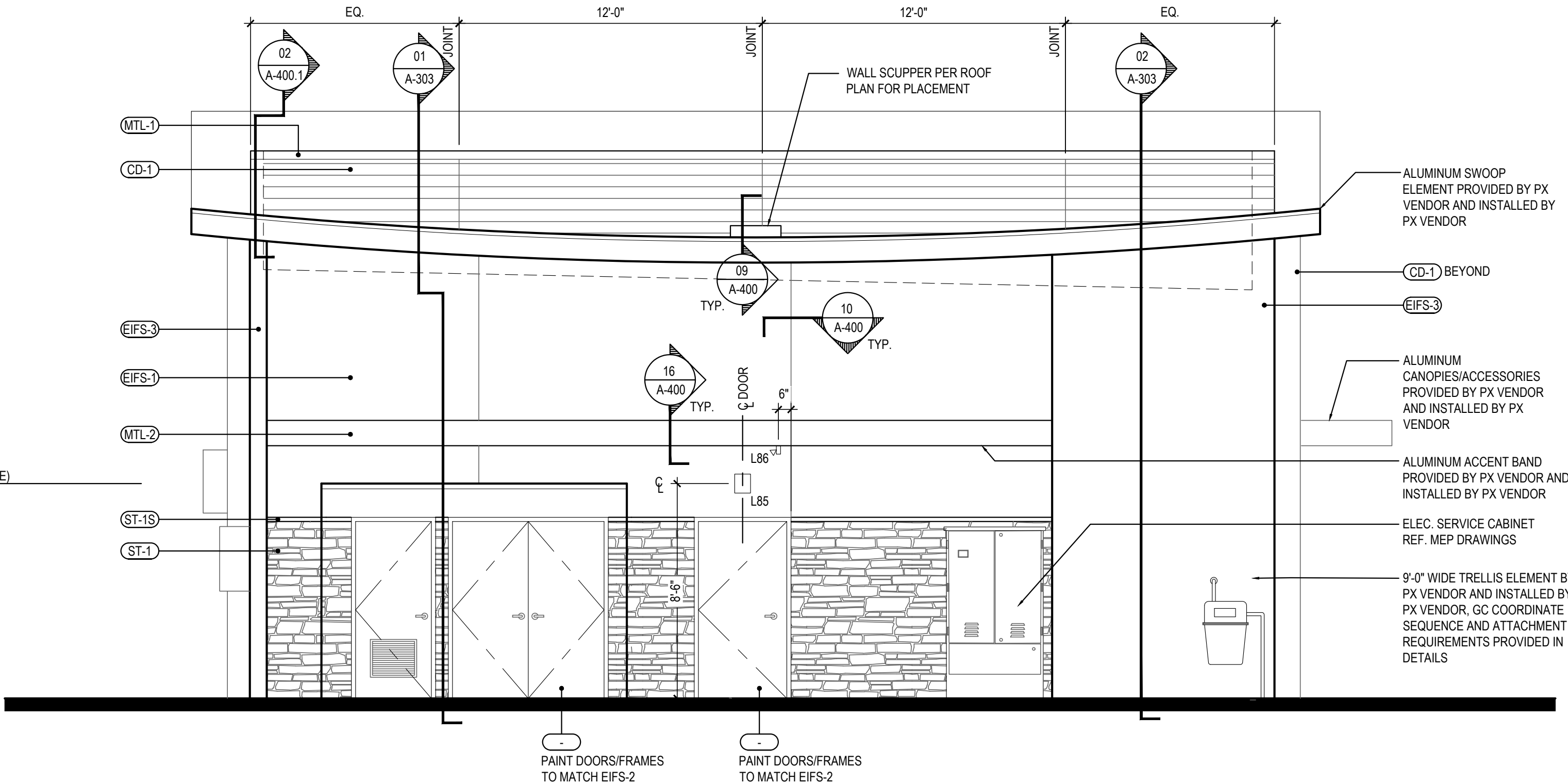
- B.O. BAND
10'-0" A.F.F.
- T.O. PLATE (STORAGE)
8'-6" A.F.F.
- T.O. WAINSCOT
7'-2" A.F.F.

- FINISH FLOOR
0'-0" A.F.F.

- PEAK
23'-3" +/- A.F.F.
- T.O. SIDE PARAPET
21'-8" A.F.F.
- T.O. EAVE
20'-0" +/- A.F.F.
- T.O. PARAPET
19'-8" A.F.F.

- B.O. BAND
10'-0" A.F.F.
- T.O. WAINSCOT
7'-2" A.F.F.

- FINISH FLOOR
0'-0" A.F.F.

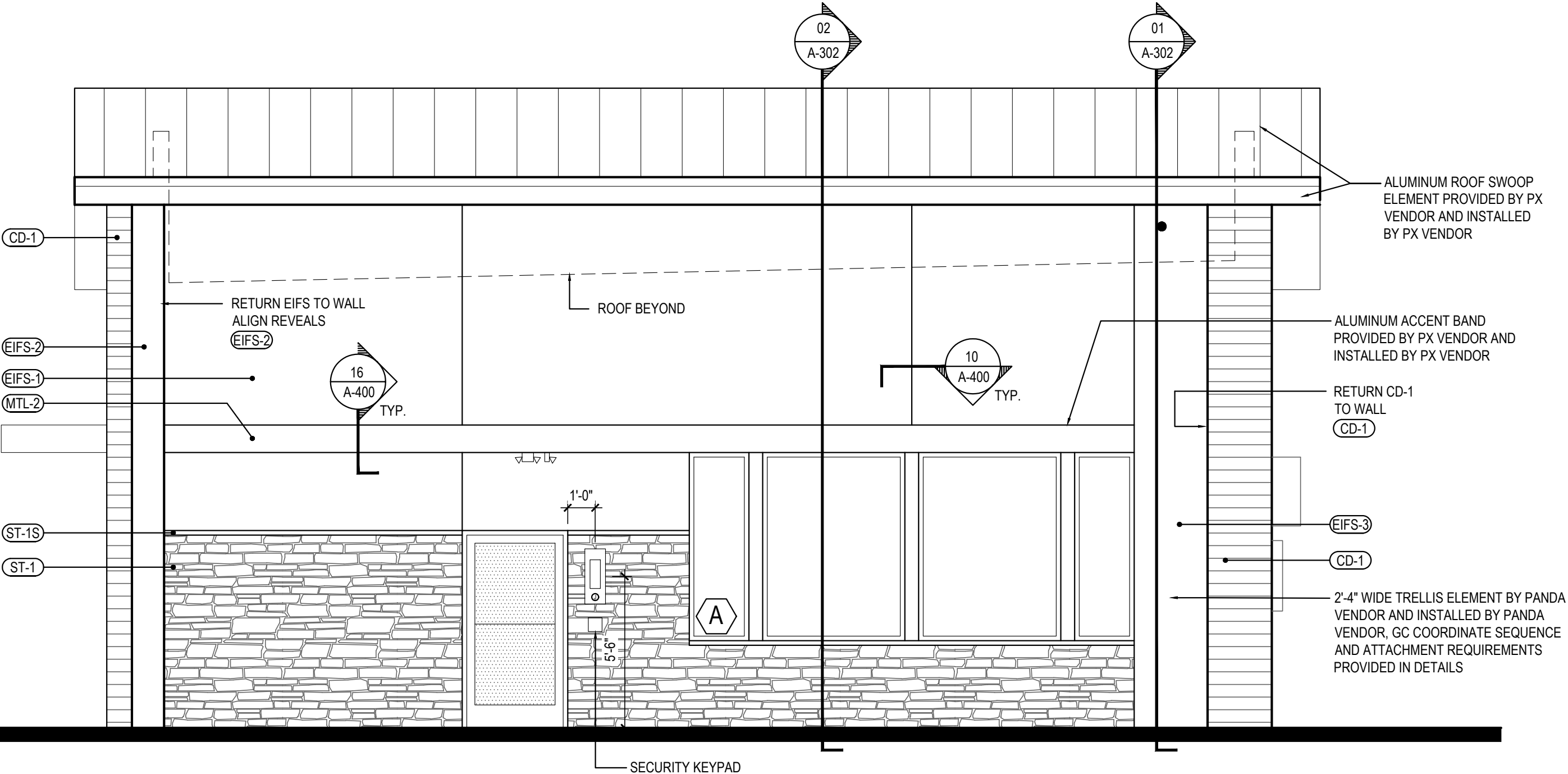


NORTH ELEVATION

2

Scale= 1/4" = 1'-0"

A-200



SOUTH ELEVATION

1

Scale= 1/4" = 1'-0"

A-200



PANDA EXPRESS, INC.
1683 Walnut Grove Ave.
Rosemead, California
91770
Telephone: 626.799.9898
Facsimile: 626.372.8288

All ideas, designs, arrangement and plans indicated or represented by this drawing are the property of Panda Express Inc. and were created for use on this specific project. None of these ideas, designs, arrangements or plans may be used by or disclosed to any person, firm, or corporation without the written permission of Panda Express Inc.

REVISIONS:

ISSUE DATE:

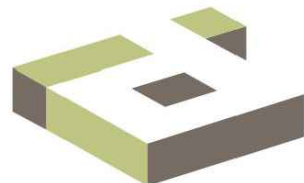
ISSUE FOR PERMIT 01-16-23

DRAWN BY:

AE

PANDA PROJECT #: D21040

ARCH PROJECT #: 261-415



idGROUP



01.16.23

PANDA EXPRESS

PANDA HOME 2600
KILPATRICK TURNPIKE & ROCKWELL AVE
OKLAHOMA CITY, OK 73162

A-200

EXTERIOR
ELEVATIONS

PANDA HOME 2600 R4