

PERFORMANCE TEST FOR LISTED MECHANICAL HOOD IS REQUIRED PER UMC 509.11

GREASE HOOD SYSTEM CALCULATION

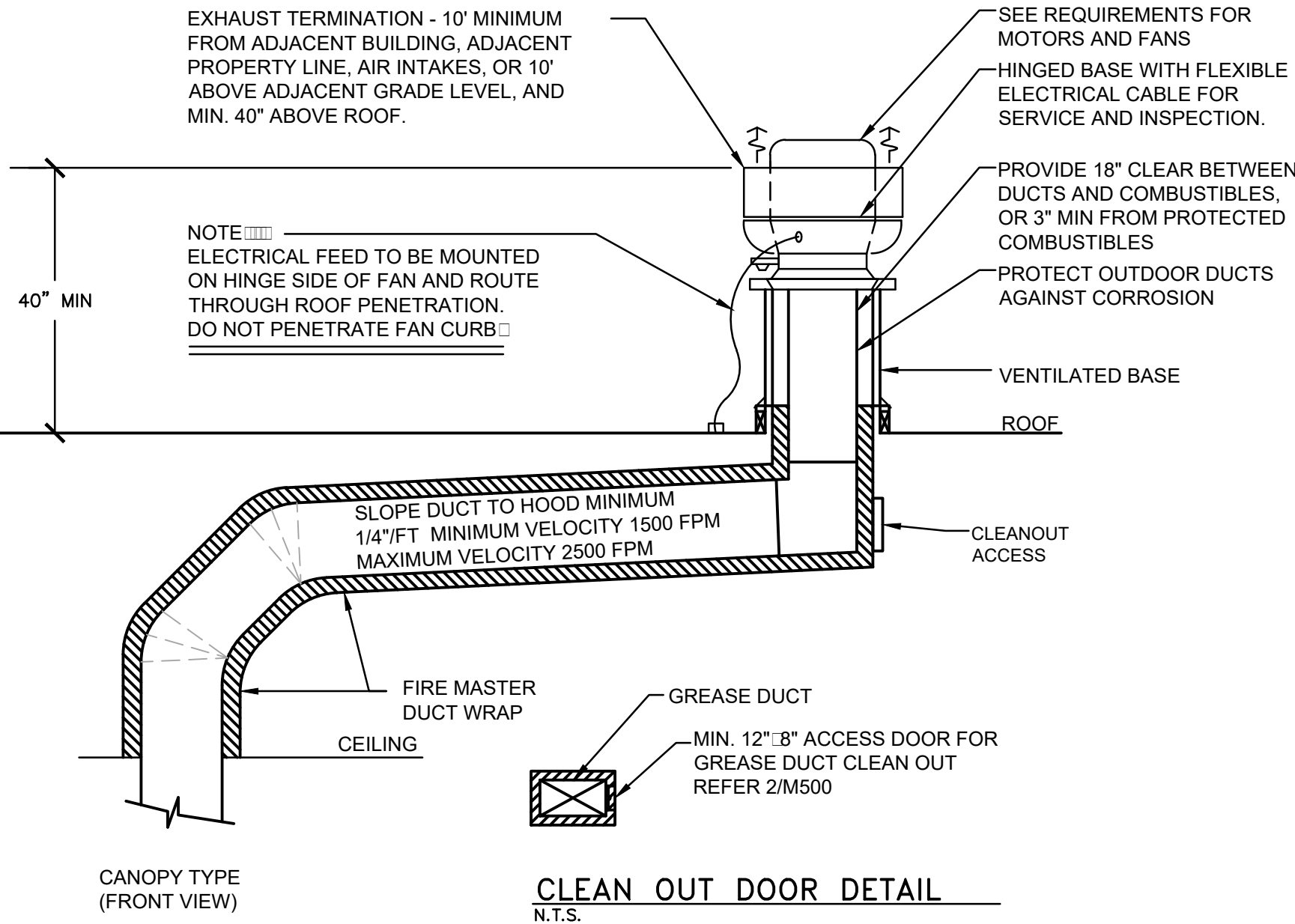
1. TYPE : CANOPY TYPE I, STAINLESS STEEL 18 GAUGE,
2. COOKING EQUIPMENT: (2) CHINESE RANGE, (2) DEEP FRYER, RICE COOKER
3. SIZE: 23'-6" X 14'-0" X 2'-0" MAKEUP AIR PLENUM
4. MIN. REQ'D CAPACITY CFM: (2) U.L. LISTED HOOD X 3,450 CFM EACH
5. PROPOSED (2) EXHAUST FAN X (1) MAKE-UP AIR UNIT. EF1 X EF2 (3,450 CFM EACH); MAU1 (5,520 CFM, 80% OF EXHAUST)
6. EXHAUST DUCT SIZE: 22"X14"
7. EXHAUST VELOCITY X EXHAUST DUCT 3450/(22"x14"/144") X 1612 FPM 1500FPM X 1612 FPM X 2500FPM
8. EXHAUST FAN (EF1 X EF2) AND MAKE-UP AIR UNIT (MAU1) SHALL BE ELECTRICALLY INTERLOCKED
9. FOR CODE COMPLIANCE SEE DETAIL
10. INTERLOCK RTU FANS TO OPERATE WITH KEF'S FOR MAKEUP AIR.

INFORMATIONAL GUIDE FOR COMMERCIAL COOKING HOODS

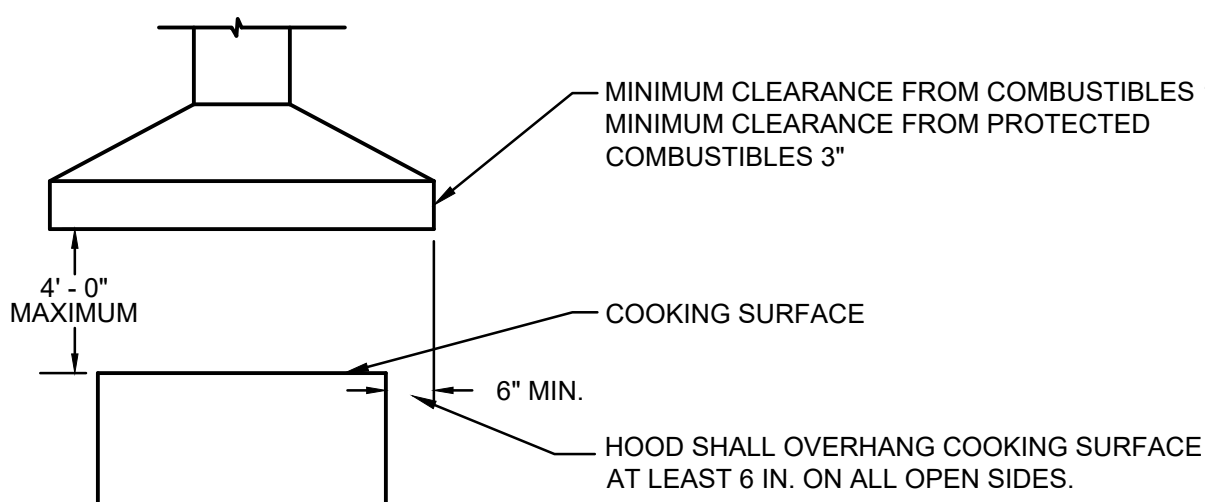
1. STAINLESS STEEL TO BE NO. 18 U.S. GAGE
2. WHEN GUTTERS ARE PROVIDED THEY SHALL DRAIN TO A COLLECTING PAN WHICH IS READILY ACCESSIBLE FOR CLEANING
3. SEE TABLE 507.11 FOR MINIMUM DISTANCE BETWEEN LOWER EDGE OF GREASE FILTER AND THE COOKING OR HEATING SURFACE.
4. GREASE FILTERS SHALL BE OF STEEL CONSTRUCTION AND READILY ACCESSIBLE FOR CLEANING.
5. ALL JOINTS AND SEAMS SHALL BE GREASE TIGHT.
6. HOODS SHALL BE SECURELY FASTENED IN PLACE BY INCOMBUSTIBLE SUPPORTS.

NOTES

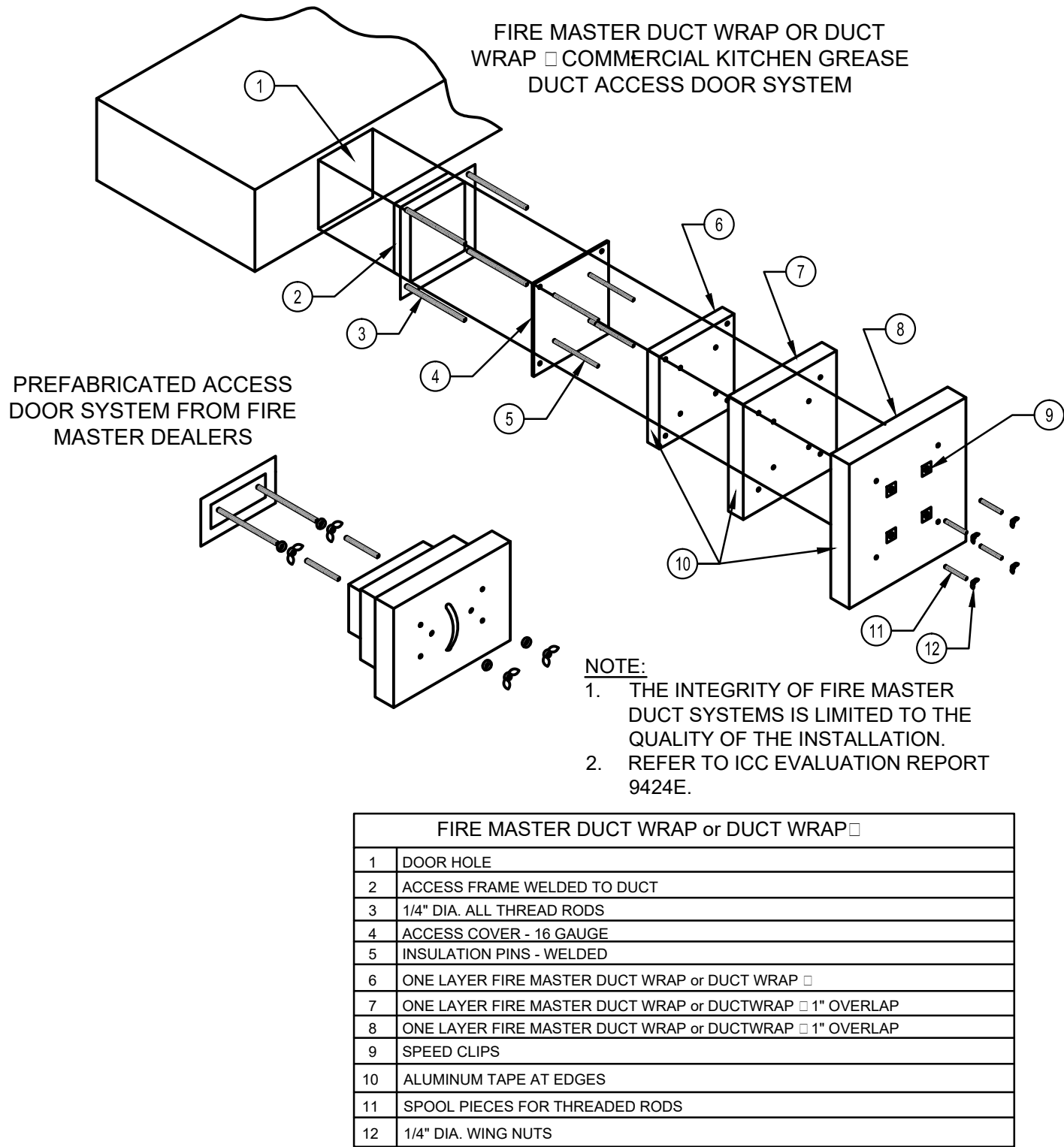
1. PROVIDE ADEQUATE CLEANOUT OPENINGS FOR THOROUGH CLEANING OF DUCT SYSTEM.
2. PROVIDE ADEQUATE MAKE-UP AIR FOR PROPER OPERATION.
3. PROVIDE A SEPARATE DUCT SYSTEM FOR EACH HOOD.
4. THICKNESS OF DUCTS SHALL BE:  
DUCT AREA U.S. GAGE STEEL  
UP TO 4 SQ. FT. 16 GA  
OVER 4 SQ. FT. 14 GA
5. WELD OR BRAZE ALL DUCT JOINTS AND SEAMS ON THE EXTERNAL SURFACE.
6. SUPPORT THE DUCTS AS REQUIRED. DO NOT PENETRATE DUCT WALLS WITH SCREWS, NAILS, ETC.
7. SECTIONS OF DUCT SHALL NOT CONTAIN GREASE POCKETS.



CLEAN OUT DOOR DETAIL  
N.T.S.



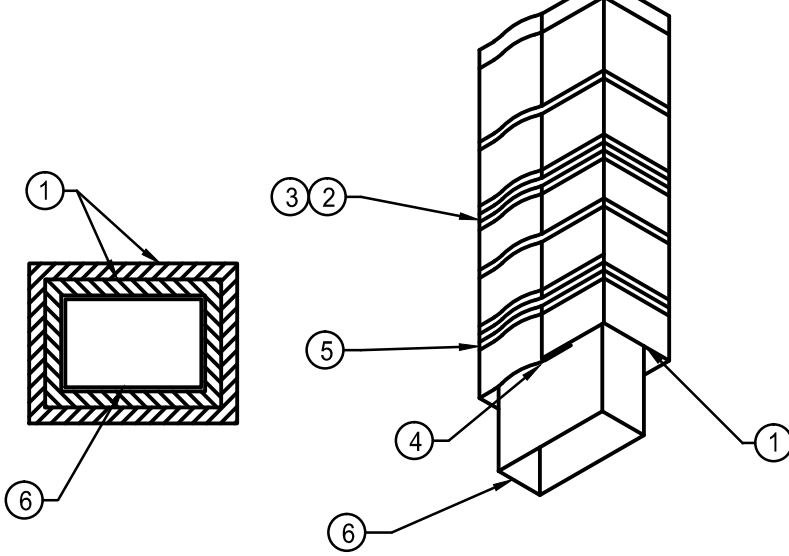
(FOR REFERENCE ONLY)



GREASE DUCT ACCESS DOOR 2

M-500

NOTE:  
GREASE EXHAUST DUCT INSULATION TYPE FIRE MASTER FASTWRAP X SILICON SEALANT APPROVED FOR 2-HOUR STRUCTURE.



LEGEND	
1	TWO LAYERS FIRE MASTER FASTWRAP X
2	FILAMENT TAPE
3	BANDING
4	3-INCH PERIMETER OVERLAP
5	3-INCH LONGITUDINAL OVERLAP
6	GREASE DUCT

FOR SI: 1 INCH=25.4 MM UL # YYET-R14229  
FIGURE 2-HOUR FIRE-RESISTIVE PROTECTION SYSTEM FOR GREASE DUCTS

2 HOUR GREASE DUCT WRAP 1

Scale: NO SCALE M-500



PANDA RESTAURANT GROUP INC.

1683 Walnut Grove Ave.  
Rosemead, California  
91770

Telephone: 626.799.9898  
Facsimile: 626.372.8288

All ideas, designs, arrangement and plans indicated or represented by this drawing are the property of Panda Express Inc. and were created for use on this specific project. None of these ideas, designs, arrangements or plans may be used by or disclosed to any person, firm, or corporation without the written permission of Panda Express Inc.

REVISIONS:

ISSUE DATE:

1st	ISSUE FOR PERMIT	02-15-17
2nd	ISSUE FOR BID	02-22-17

DRAWN BY:

PANDA PROJECT #: S8-17-D4968.

ARCH PROJECT #: 1703

Project No.  
PE1703

Kurzynske  
& Associates  
CONSULTING ENGINEERS  
2900 Lebanon Pike  
Suite 201  
Nashville, Tennessee 37214



PANDA EXPRESS

Terrence at Suwanee Gateway (in front of Lowe's)  
3276 LAWRENCEVILLE-SUWANEE RD  
SUWANEE, GA

2200 TRUE WARM & WELCOME

M-500

KITCHEN HOOD DETAILS

TRUE WARM & WELCOME 2200