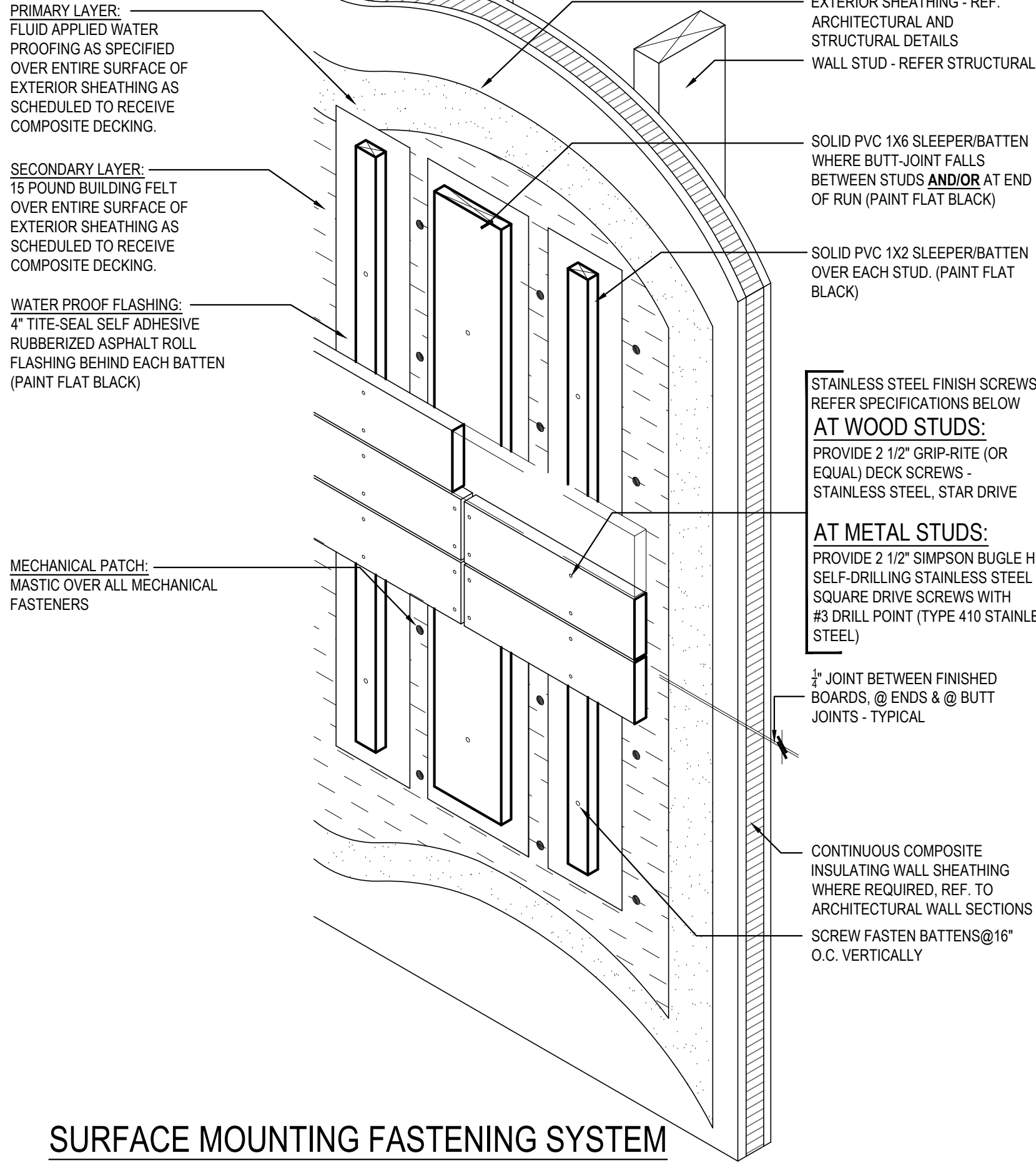


### SCREW/FASTENING DTL.

### WATER/AIR BARRIER



### CONSTRUCTION

STAINLESS STEEL FINISH SCREWS REFER SPECIFICATIONS BELOW

**AT WOOD STUDS:**  
PROVIDE 2 1/2" GRIP-RITE (OR EQUAL) DECK SCREWS - STAINLESS STEEL, STAR DRIVE

**AT METAL STUDS:**  
PROVIDE 2 1/2" SIMPSON BUGLE HEAD SELF-DRILLING STAINLESS STEEL - #2 SQUARE DRIVE SCREWS WITH #3 DRILL POINT (TYPE 410 STAINLESS STEEL)

1/2" JOINT BETWEEN FINISHED BOARDS, @ ENDS & @ BUTT JOINTS - TYPICAL

CONTINUOUS COMPOSITE INSULATING WALL SHEATHING WHERE REQUIRED, REF. TO ARCHITECTURAL WALL SECTIONS

SCREW FASTEN BATTENS@16" O.C. VERTICALLY

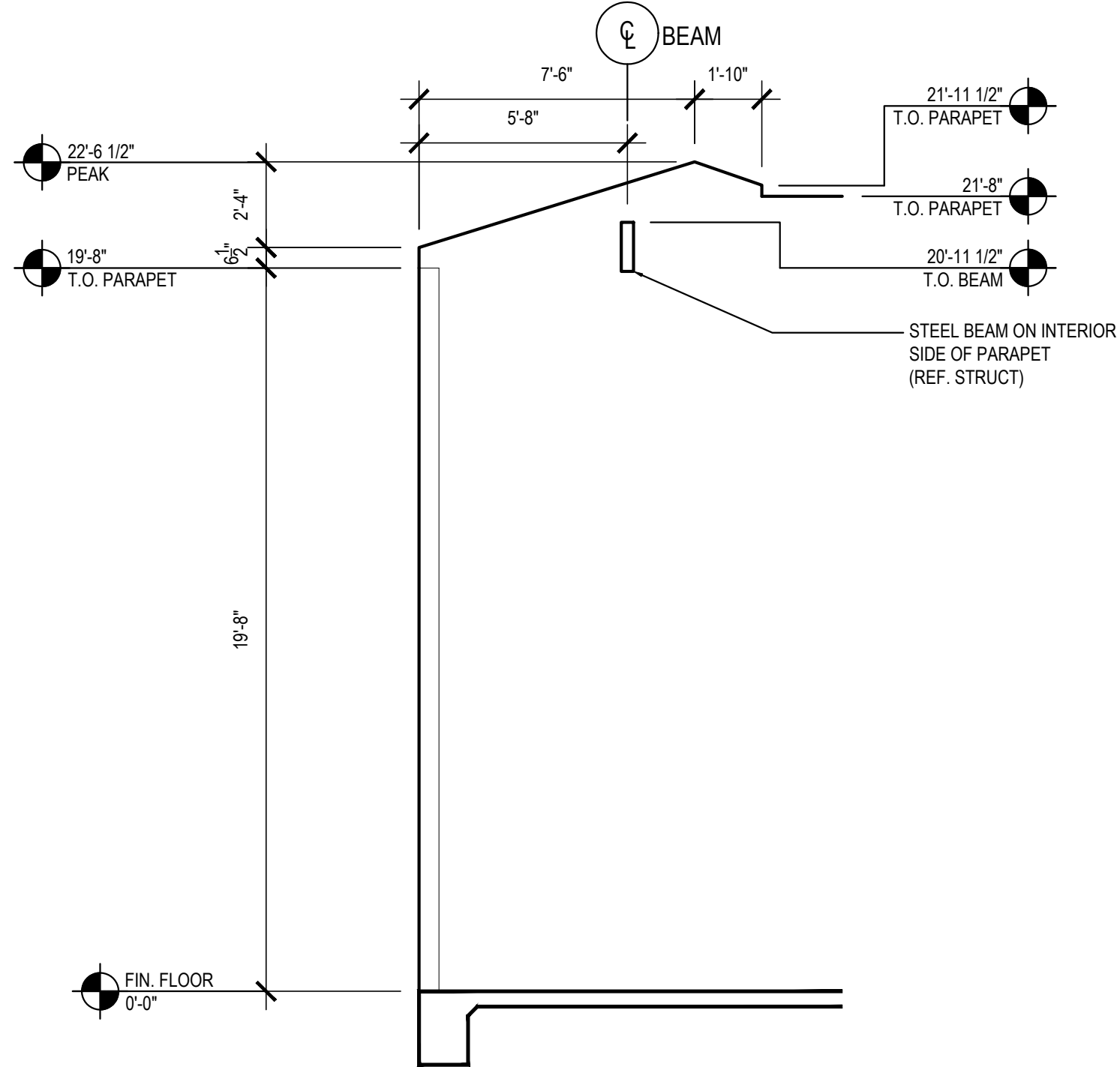
### SURFACE MOUNTING FASTENING SYSTEM

### COMPOSITE DECK FASTENING & WATER PROOFING

Scale= 1 1/2" = 1'-0"

3

A-201

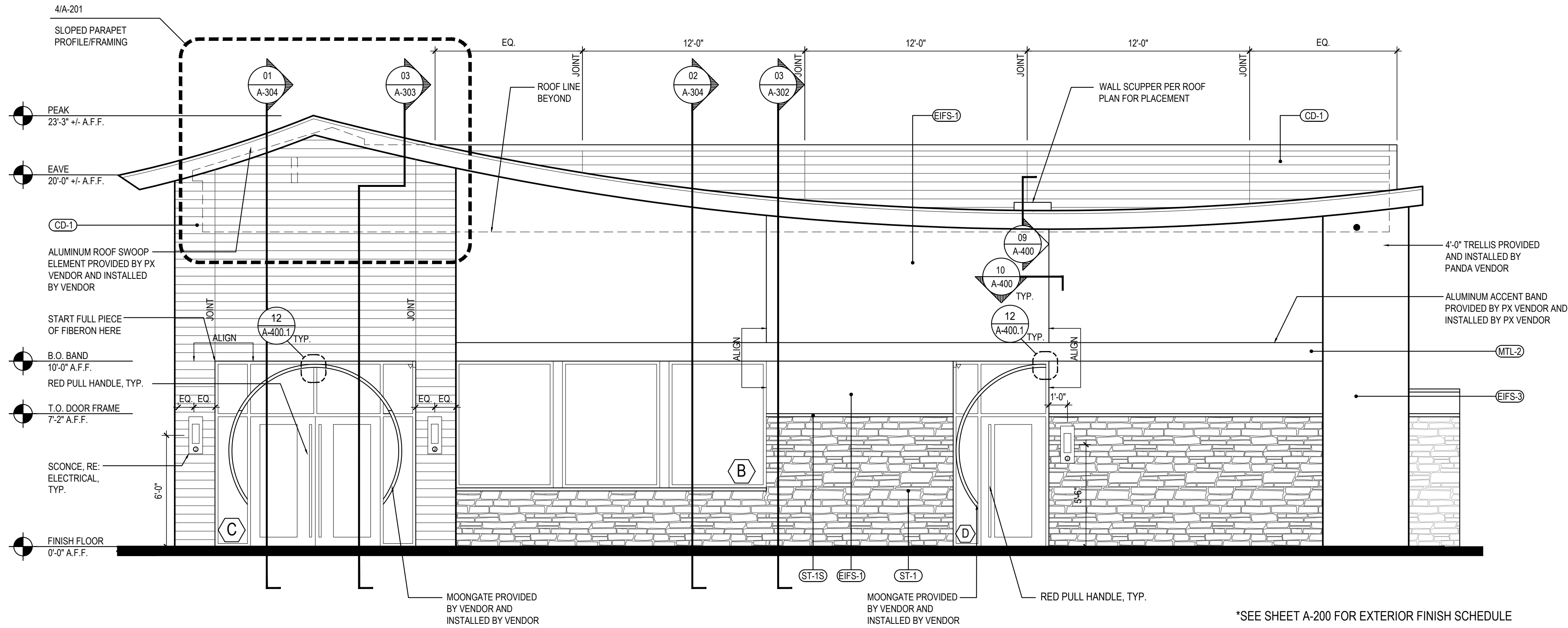


### SLOPED PARAPET FRAMING PROFILE

Scale= 1/4" = 1'-0"

4

A-201



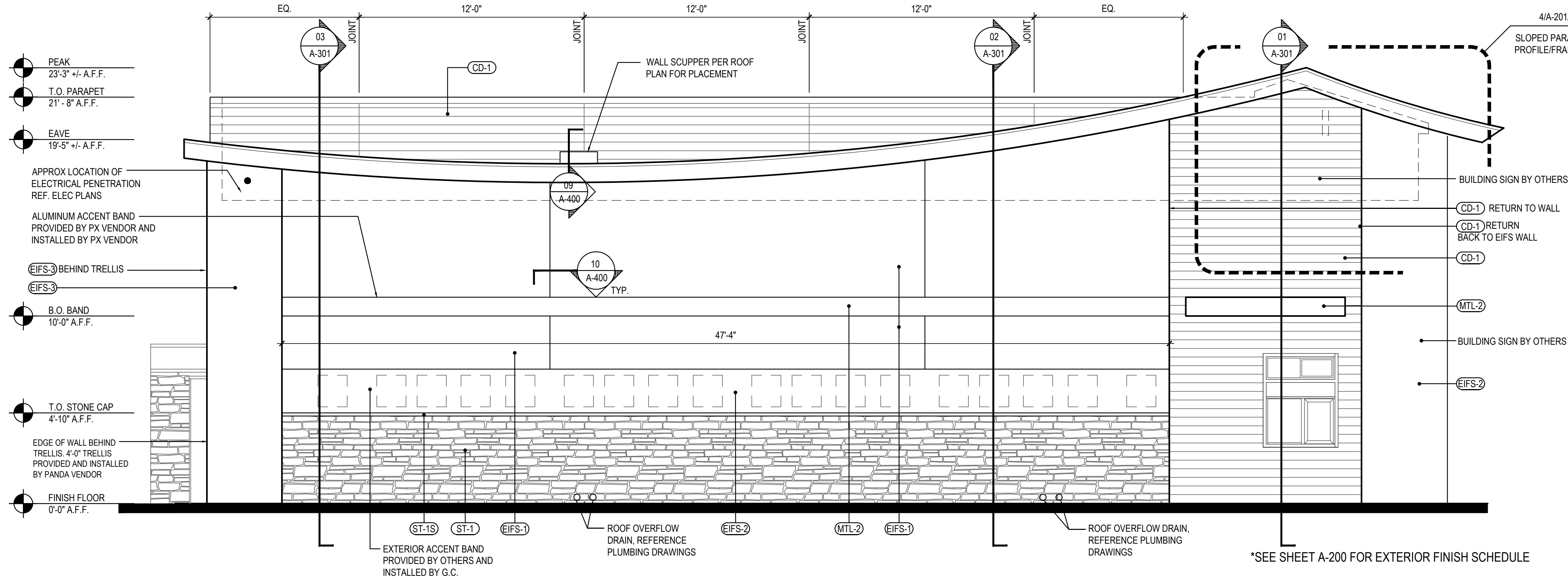
\*SEE SHEET A-200 FOR EXTERIOR FINISH SCHEDULE

### EAST ELEVATION

2

Scale= 1/4" = 1'-0"

A-201



\*SEE SHEET A-200 FOR EXTERIOR FINISH SCHEDULE

### WEST ELEVATION

1

Scale= 1/4" = 1'-0"

A-201



PANDA EXPRESS, INC.  
1683 Walnut Grove Ave.  
Rosemead, California 91770  
Telephone: 626.799.9898  
Facsimile: 626.372.8288

All ideas, designs, arrangement and plans indicated or represented by this drawing are the property of Panda Express Inc. and were created for use on this specific project. None of these ideas, designs, arrangements or plans may be used by or disclosed to any person, firm, or corporation without the written permission of Panda Express Inc.

### REVISIONS:

### ISSUE DATE:

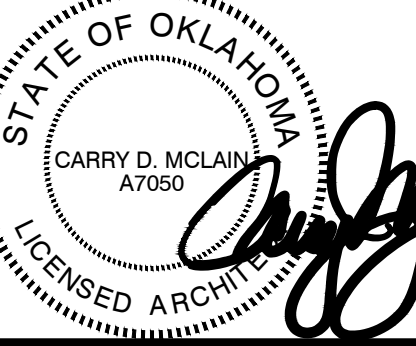
ISSUE FOR PERMIT 01-16-23

### DRAWN BY:

AE

PANDA PROJECT #: D21040

ARCH PROJECT #: 261-415



01.16.23

### PANDA EXPRESS

PANDA HOME 2600  
KILPATRICK TURNPIKE & ROCKWELL AVE  
OKLAHOMA CITY, OK 73162

A-201

EXTERIOR ELEVATIONS

PANDA HOME 2600 R4

ISSUE FOR PERMIT - 01.16.23