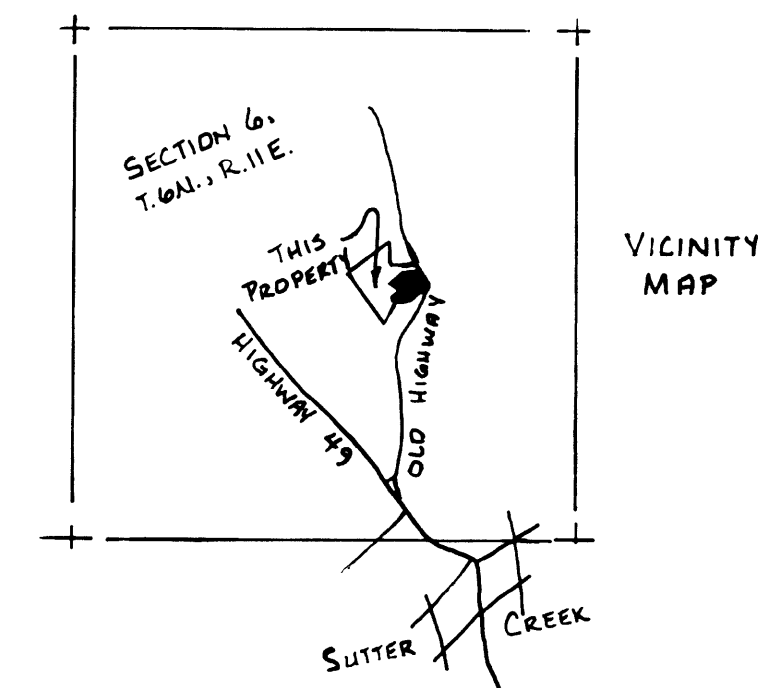


PARCEL MAP 2091-LUNDLEE, B.

BEING A PORTION OF THE NORTH HALF OF SECTION 6, T.6N., R.11E., M.D.M.,
AND A PORTION OF LOT 37, BLOCK 1, SUTTER CREEK TOWNSITE;
AMADOR COUNTY CALIFORNIA
MAY, 1984 SCALE: 1" = 40' DEED: 44 O.R. 209



BASIS OF BEARINGS AS SHOWN HEREON IS CALCULATED
PER 32-M-38.

LEGEND

- SET 5/8 INCH REBAR WITH ALUMINUM CAP STAMPED L.S. 3488.
- ▲ SET STEEL COTTON-PICKER SPIKE IN PAVING.
- FOUND WOOD FENCE CORNER AS NOTED (SEE 434 O.R. 382) AND TAGGED SAME L.S. 3488.
- ⊙ FOUND 1 INCH IRON ROD AT FENCE CORNER AND TAGGED SAME L.S. 3488.
- ⊙ FOUND 1 INCH IRON PIPE BURIED UNDER FENCE LINE AND TAGGED SAME L.S. 3488.
- ⊙ FOUND 1/2 INCH IRON ROD, L.S. 2902 PER 32-M-38.
- CALCULATED POINTS ONLY.
- SET 5/8 REBAR TAGGED L.S. 3488.
- P— EXISTING POWER LINES.
- T— EXISTING TELEPHONE LINES.
- () RECORD DATA PER 44 O.R. 209.
- || RECORD DATA PER 32-M-38.
- |||| INDICATES PROPERTY OFFERED FOR DEDICATION AND ACCEPTED BY AMADOR COUNTY FOR ROAD AND UTILITY EASEMENT BOUNDED ON EAST BY EASTERLY PROPERTY LINE SHOWN HEREON AND BOUNDED ON WEST BY A LINE 30 FEET WESTERLY OF AND PARALLEL TO THE CENTERLINE OF THE OLD SUTTER CREEK-AMADOR CITY ROAD.

ROBERT E. HAMM
LAND SURVEYORS

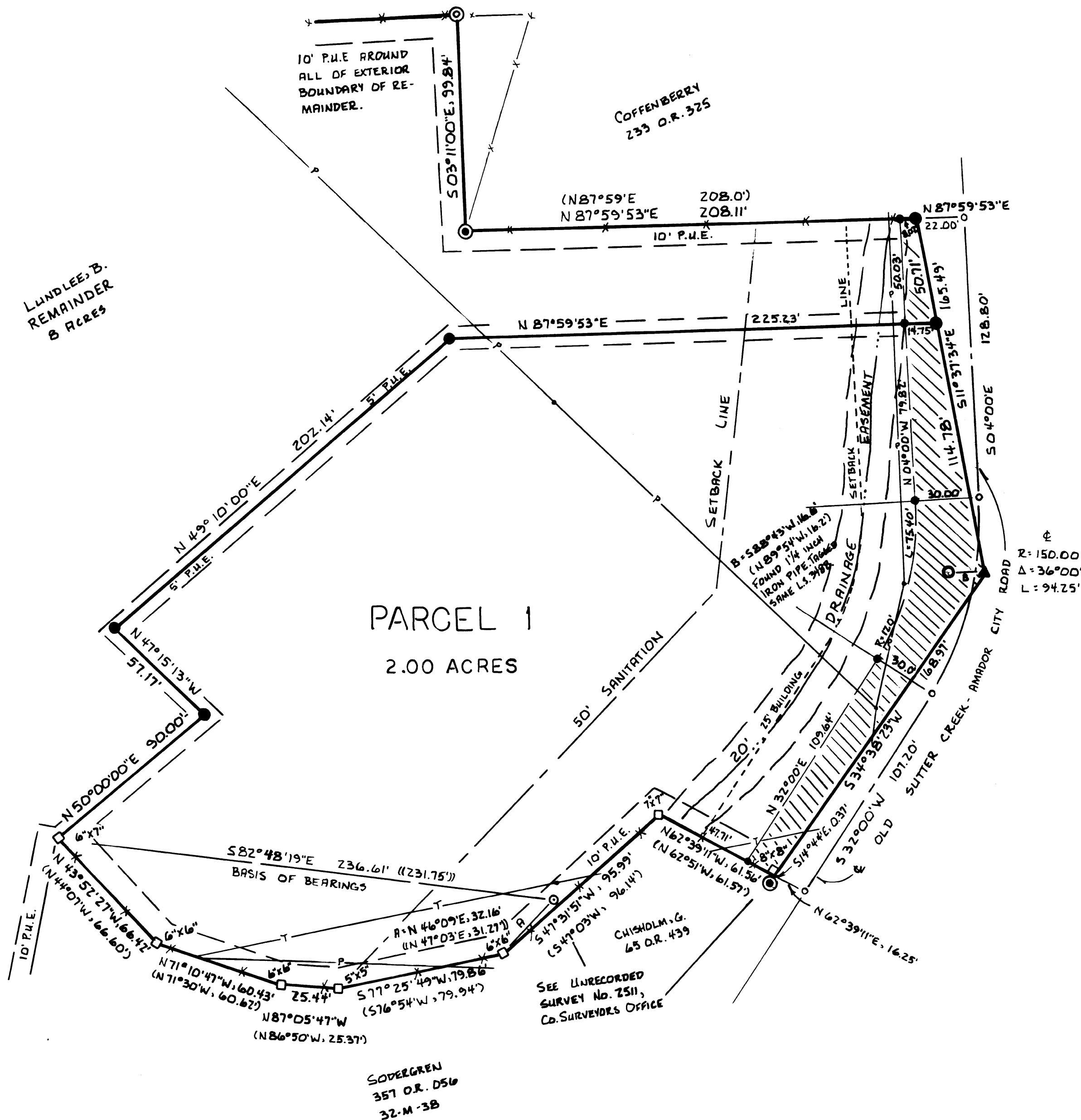
114 MAIN ST., #210
OR BOX 935
JACKSON, CA. 95642
(209) 223-1061

SHEET 2 OF
2 SHEETS

MAY, 1984

SCALE: 1" = 40'

W.O. #715



NOTE: MINERAL DEPOSITS EXIST AND MINING OPERATIONS HAVE BEEN CONDUCTED IN THE PAST ON ADJACENT PROPERTIES AND THERE IS AN UNDETERMINED POTENTIAL FOR FUTURE MINING OPERATIONS TO BE CONDUCTED ON ADJACENT PROPERTIES.

SWB

38-M-70