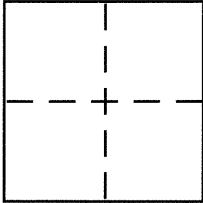


CORNER RECORDDocument Number CR 7470City of OAKLANDCounty of ALAMEDA, CaliforniaBrief Legal Description LOTS 219 & 220, BOOK 4 OF MAPS, PAGE 50**CORNER TYPE**

Government Corner ☐ Control ☐
 Meander ☐ Property ☒
 Rancho ☐ Other ☐
 Date of Survey 4/24/15

COORDINATES (Optional)

N. _____
 E. _____
 Zone _____ NAD27 ☐ NAD83 ☐
 NAD83 Epoch _____
 Elev. _____
 Vert. Datum: NGVD29 ☐ NAVD88 ☐
 Meas. Units: Metric ☐ Imperial ☒

Corner - Left as found ☐ Found and tagged ☐ Established ☒ Reestablished ☐ Rebuilt ☐

Identification and type of corner found: Evidence used to identify or procedure used to establish or reestablish the corner:

FOUND STANDARD STREET MONUMENTS IN
GOOD CONDITION AS SHOWN ON P. 2

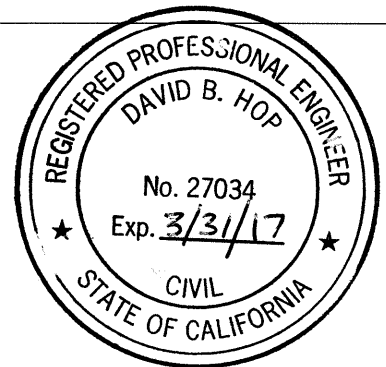
A description of the physical condition of the monument as found and as set or reset:

SET 1/2" REBAR W/CAP "RCE 27034" AT
LOCATIONS SHOWN ON P. 2

SURVEYOR'S STATEMENT

This Corner Record was prepared by me or under my direction in conformance with the Land Surveyor's Act on 7/30/15

Signed David B. Hop P.L.S. or R.C.E. No. 27034

**COUNTY SURVEYOR'S STATEMENT**

This Corner Record was received 8-7-15

and examined and filed 8-11-15

Signed David B. Hop P.L.S. or R.C.E. No. 5726

Title County Surveyor

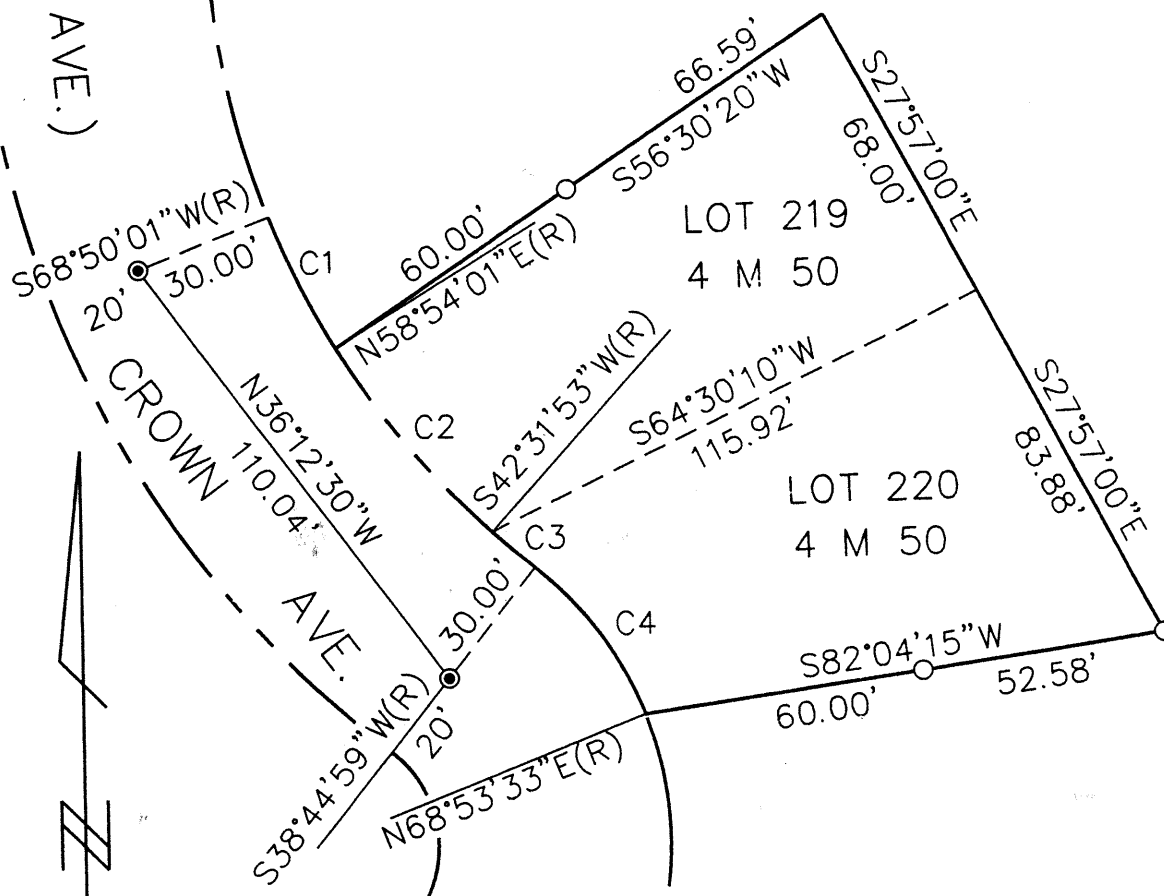
County Surveyor's Comment APN: 48G-7436-62-1



(URANUS AVE.)

LEGEND

- FOUND STD. STREET MON.
- SET 1/2" REBAR AND CAP "RCE 27034" FLUSH W/SURFACE



SCALE 1" = 40'

CURVE TABLE			
CURVE	LENGTH	RADIUS	DELTA
C1	31.56	182.00	9°56'00"
C2	52.00	182.00	16°22'08"
C3	12.00	182.00	3°46'54"
C4	40.00	76.00	30°08'34"