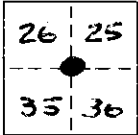


CORNER RECORD

COUNTY OF MONO T. 9N R. 22E MERIDIAN CALIFORNIA

CORNER TYPE: GOV'T. CORNER ☒ MEANDER ☐ RANCHO ☐ CONTROL ☐ OTHER ☐

CORNER IDENTIFICATION - DATE OF VISIT 21 AUG 1975



Observed and photographed by M. Allstead

Section Corner Northwest 36

CORNER - LEFT AS FOUND ☒ FOUND AND TAGGED ☐ REESTABLISHED OBLITERATED CORNER ☐ REBUILT ☐

PHYSICAL DESCRIPTION OF CORNER FOUND: EVIDENCE AND METHOD USED TO IDENTIFY OR REESTABLISH

Roll #2 Frame #3 - Close up of GLO cap and pin with lettering facing North

Roll #2 Frame #4 - From 15± ft behind and above corner looking east toward Hwy 395

Description by D. Hunter 8-26-75 - Found USGLO Brass Disc on 1 1/2" O.D.I.P. 0.9'± above ground & in a mound of rocks. Corner is located on east slope

PHYSICAL DESCRIPTION OF MONUMENTS REBUILT OR PERPETUATED of a hill, 50'± West & 15'± higher than a dirt road, 6' north of two 8' high Pinion pine trees & 10'± east of a 1.5' x 3'± Rock (Gray Slate). A 1" diameter Steel pin 0.9' above ground is located 0.16' West of the Corner., found old lath and wood lying in the area.

Copy by P. Humes

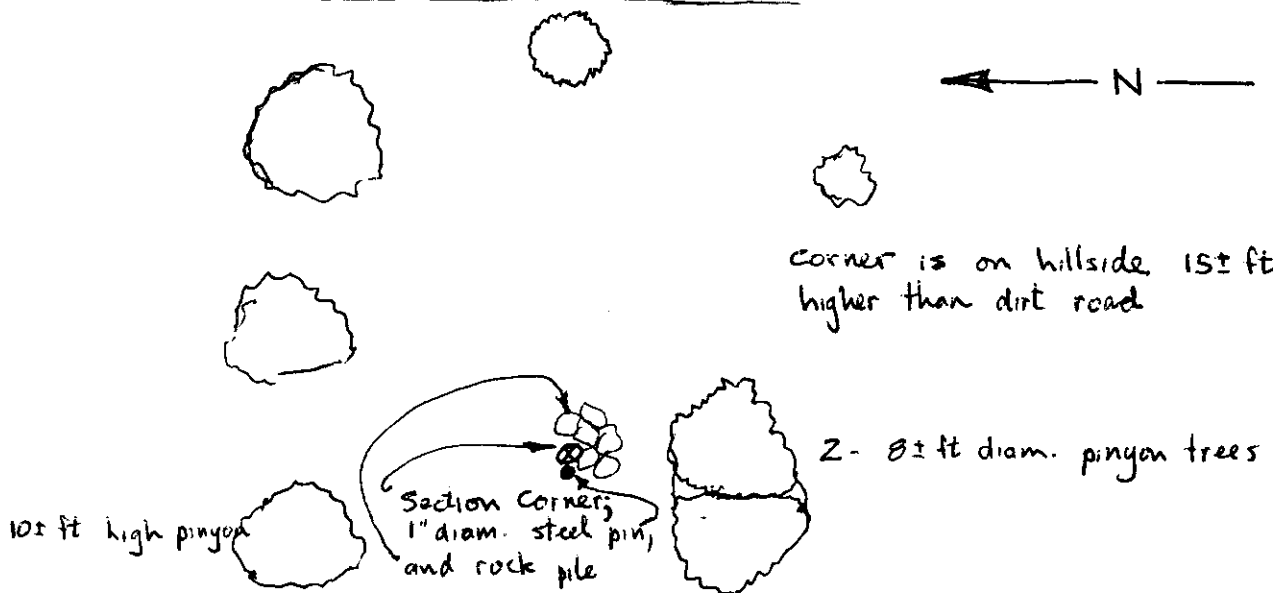
CALIFORNIA COORDINATE SYSTEM ORDER: FIRST ☐ SECOND ☐ THIRD ☐

STATIONS USED: NGS (USC & GS) ☐ STATE ☐ COUNTY ☐ OTHER ☐ STATION _____ STATION _____

ZONE _____ ELEVATION _____ NORTHINGS (Y) _____ EASTINGS (X) _____

SKETCH: (Include reference tie or witness points, remarks and topo of area)

2 Wheel Drive dirt road 50± ft East of corner



SURVEYOR'S CERTIFICATE

THIS CORNER RECORD WAS PREPARED BY ME OR UNDER MY DIRECTION IN CONFORMANCE WITH THE LAND SURVEYORS ACT ON 8-26 1975

1/25/78 SIGNED: [Signature] L.S. or R.C.S. No. 4468

SEAL

COUNTY SURVEYOR'S CERTIFICATE

THIS CORNER RECORD WAS RECEIVED _____ 19____ AND EXAMINED AND FILED _____ 19____

BY: _____

TITLE: _____

DOCUMENT No. 91122-36-2

STATEMENT ON BACK OF SHEET

YES ☐ NO ☐