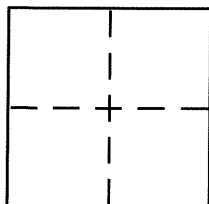


# CORNER RECORD

City of BERKELEY

County of ALAMEDA, California

Brief Legal Description CITY OF BERKELEY MONUMENT B1629



## CORNER TYPE

Government Corner ☐ Control ☒  
Meander ☐ Property ☐  
Rancho ☐ Other ☐  
Date of Survey DECEMBER 10, 2014

## COORDINATES (Optional)

N. \_\_\_\_\_  
E. \_\_\_\_\_  
Zone \_\_\_\_\_ NAD27 ☐ NAD83 ☐  
NAD83 Epoch \_\_\_\_\_  
Elev. \_\_\_\_\_  
Vert. Datum: NGVD29 ☐ NAVD88 ☐  
Meas. Units: Metric ☐ Imperial ☐

Corner – Left as found ☒ Found and tagged ☐ Established ☐ Reestablished ☐ Rebuilt ☐

Identification and type of corner found: Evidence used to identify or procedure used to establish or reestablish the corner:  
IN COMPLIANCE WITH SECTION 8771 OF THE PROFESSIONAL LAND SURVEYORS' ACT, THIS CORNER  
RECORD IS BEING FILED TO ESTABLISH THE POSITION OF AN EXISTING MONUMENT PRIOR TO SEWER  
CONSTRUCTION. (SEE PAGE 2)

A description of the physical condition of the monument as found and as set or reset:  
(SEE PAGE 2)

## SURVEYOR'S STATEMENT

This Corner Record was prepared by me or under my direction in conformance with  
the Land Surveyor's Act on DECEMBER 11, 2014

Signed [Signature] P.L.S. or P.C.E. No. 5003

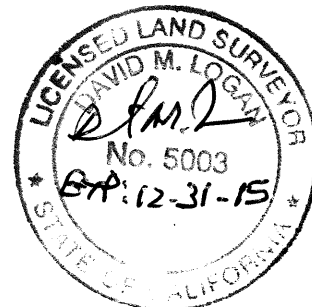
## COUNTY SURVEYOR'S STATEMENT

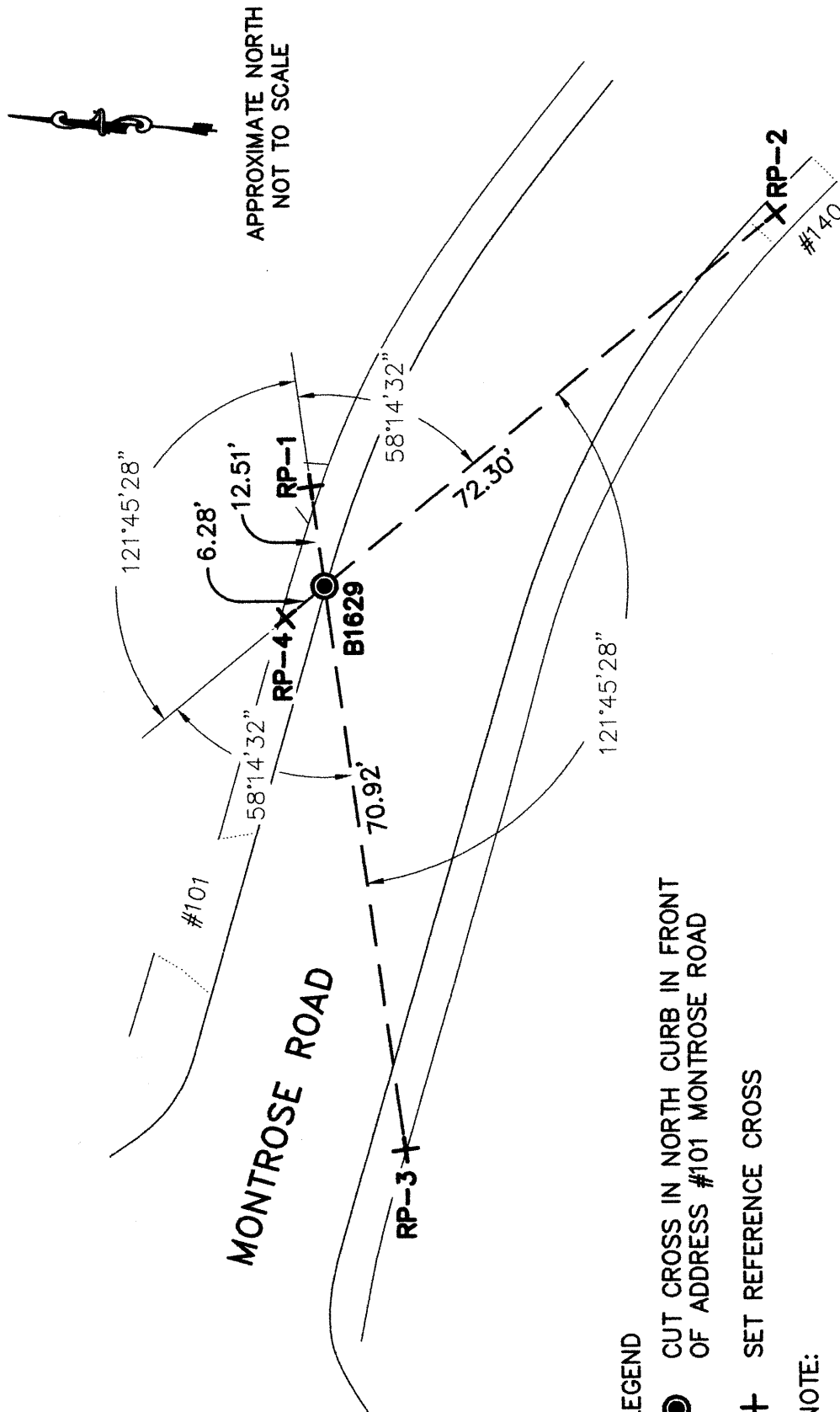
This Corner Record was received 1-6-15  
and examined and filed 1-26-15

Signed [Signature] P.L.S. or P.C.E. No. 5726

Title County Surveyor

County Surveyor's Comment \_\_\_\_\_





#### LEGEND

● CUT CROSS IN NORTH CURB IN FRONT OF ADDRESS #101 MONTROSE ROAD

+ SET REFERENCE CROSS

#### NOTE:

THE EXISTING MONUMENT AS SHOWN IS REFERENCED BY STRAIGHT LINES BETWEEN RP-1 TO RP-3 AND RP-2 TO RP-4.