

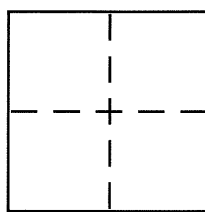
CORNER RECORD

Document Number CR 8328

City of BERKELEY

County of ALAMEDA, California

Brief Legal Description CITY OF BERKELEY MONUMENT B0564



CORNER TYPE

Government Corner . Control ☒
 Meander . Property .
 Rancho . Other .
 Date of Survey 3-25-2016

COORDINATES (Optional)

N. _____
 E. _____
 Zone _____ NAD27 . NAD83 .
 NAD83 Epoch _____
 Elev. _____
 Vert. Datum: NGVD29 . NAVD88 .
 Meas. Units: Metric . Imperial .

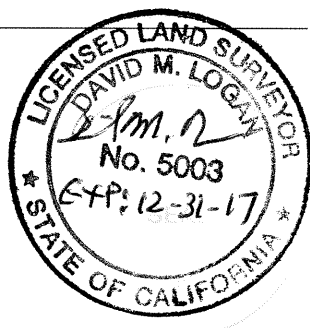
Corner – Left as found ☒ Found and tagged . Established . Reestablished . Rebuilt .

Identification and type of corner found: Evidence used to identify or procedure used to establish or reestablish the corner:
**IN COMPLIANCE WITH SECTION 8771 OF THE PROFESSIONAL LAND SURVEYORS' ACT, THIS CORNER
 RECORD IS BEING FILED TO ESTABLISH THE POSITION OF AN EXISTING MONUMENT PRIOR TO
 STREET REHABILITATION CONSTRUCTION.**

A description of the physical condition of the monument as found and as set or reset: _____
SEE PAGE 2

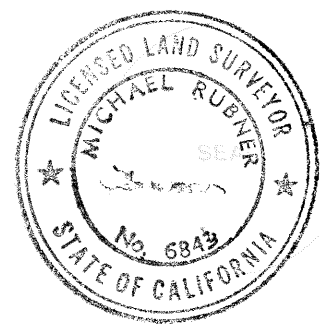
SURVEYOR'S STATEMENT

This Corner Record was prepared by me or under my direction in conformance with
 the Land Surveyors Act on 4-4-2016
 Signed [Signature] P.L.S or R.C.E. No. 5003



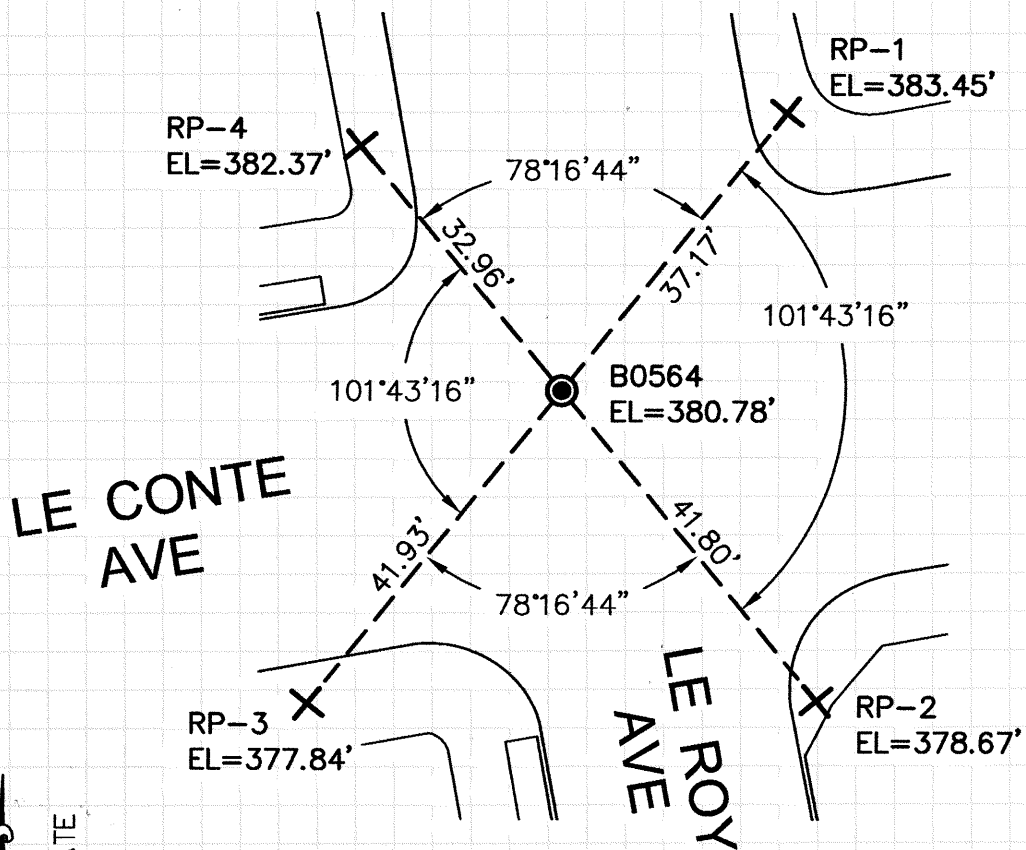
COUNTY SURVEYOR'S STATEMENT

This Corner Record was received 25 APRIL, 2016
 and examined and filed 4 MAY, 2016
 Signed [Signature] P.L.S or R.C.E. No. 6843
 Title COUNTY SURVEYOR



County Surveyor's Comment _____

UD 72A4



APPROXIMATE

SCALE 1"=20'

LEGEND



2" BRASS DISC CITY MONUMENT WITH A PUNCH MARK
IN A STANDARD MONUMENT WELL



SET REFERENCE CROSS

NOTE:

THE EXISTING MONUMENT AS SHOWN IS REFERENCED BY
STRAIGHT LINES BETWEEN RP-1 TO RP-3 AND RP-2 TO RP-4.