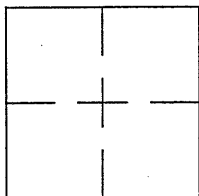


CORNER RECORD

Document Number CR 5553City of BERKELEYCounty of ALAMEDA, CaliforniaBrief Legal Description IRON PIN MONUMENT LOCATED WITHIN THE INTERSECTION OF ALCATRAZ AVENUE AND BAKER STREET PER CR 5174 (CITY OF BERKELEY: B0009)

CORNER RECORD

Government Corner ☐ Control ☒
 Meander ☐ Property ☐
 Rancho ☐ Other ☐
 Date of Survey 4/11/13

COORDINATES
(Optional)

N. _____
 E. _____
 Zone _____ Datum _____
 Elev. _____

Corner — Left as found ☒ Found and tagged ☐ Established ☐ Reestablished ☐ Rebuilt ☐

Identification and type of corner found: Evidence used to identify or procedure used to establish or reestablish the corner:
FOUND IRON PIN MONUMENT LOCATED WITHIN THE INTERSECTION OF ALCATRAZ AVENUE
AND BAKER STREET PER CR 5174. THE PURPOSE OF THIS DOCUMENT IS TO CORRECT
THE ELEVATIONS SHOWN ON CR 5174.

THIS POINT WAS REFERENCED PRIOR TO A CONSTRUCTION PROJECT IN THE VICINITY.

A description of the physical condition of the monument as found and as set or reset:
FOUND AND SET POINTS AS SHOWN ON PAGE 2.

ELEVATIONS SHOWN ON CR 5174 ARE HEREBY CORRECTED.

SURVEYOR'S STATEMENT

This Corner Record was prepared by me or under my direction in conformance with

the Land Surveyors' Act on MAY 8, 2013.

Signed Vincent H. Cunha L.S. Number L5 4520

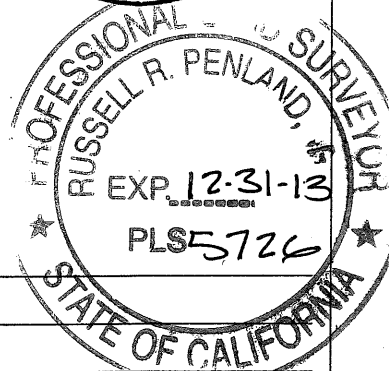


COUNTY SURVEYOR'S STATEMENT

This Corner Record was received 5-8-2013 and examined

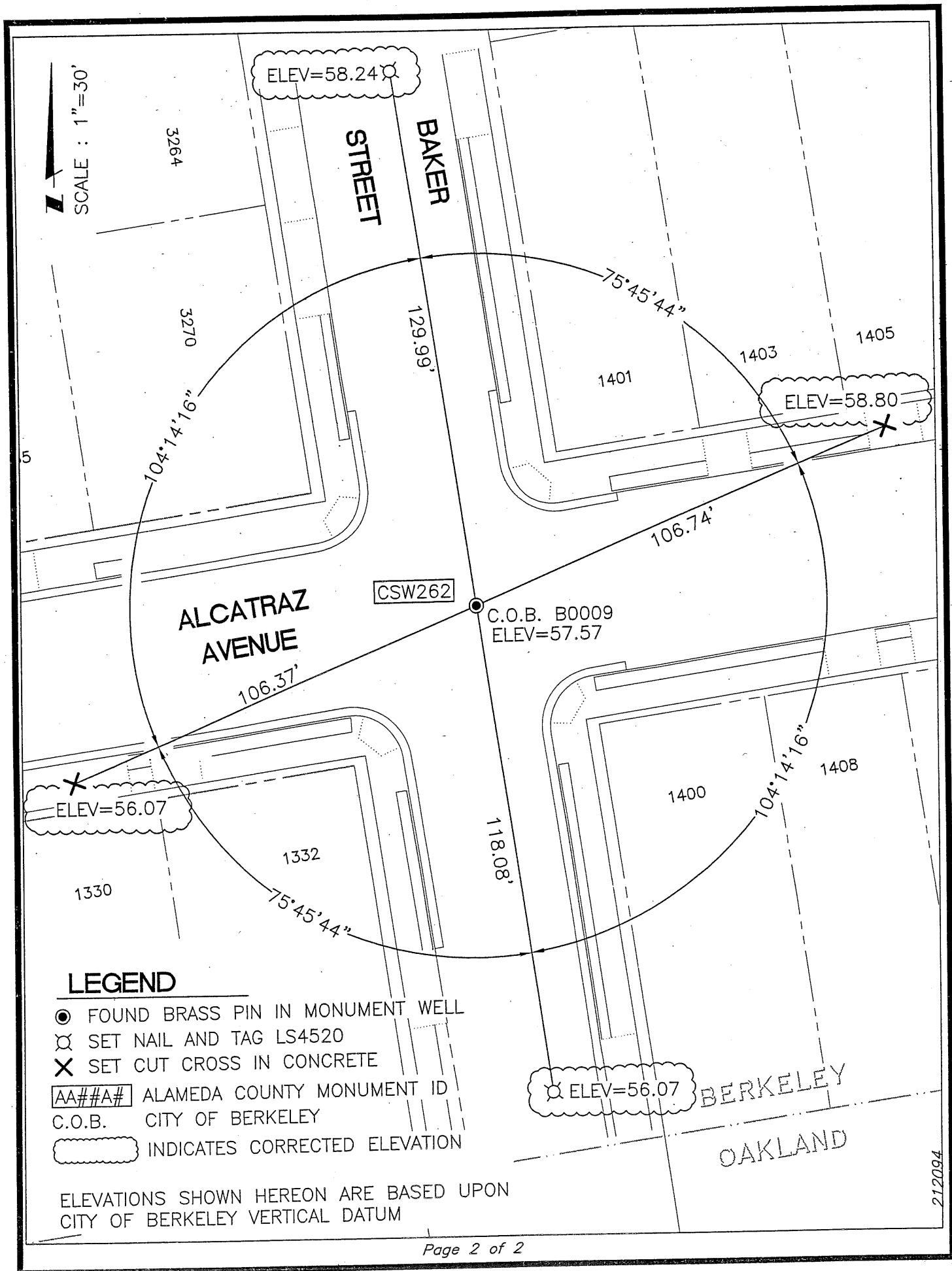
and filed 7-30-2013

Signed Russell R. Penland Title County Surveyor



County Surveyor's Comment _____

CS 62W2



LEGEND

- FOUND BRASS PIN IN MONUMENT WELL
- ⊗ SET NAIL AND TAG LS4520
- ✕ SET CUT CROSS IN CONCRETE
- AA##A# ALAMEDA COUNTY MONUMENT ID
- C.O.B. CITY OF BERKELEY
- INDICATES CORRECTED ELEVATION

ELEVATIONS SHOWN HEREON ARE BASED UPON
CITY OF BERKELEY VERTICAL DATUM