

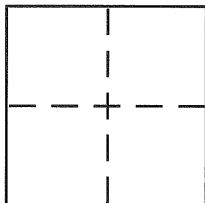
# CORNER RECORD

Document Number CR 4678

City of OAKLAND

County of ALAMEDA, California

Brief Legal Description LOT 14, BLOCK Q, A RE-SUB. OF PINEHAVEN (3M53)



## CORNER TYPE

Government Corner ☐ Control ☐  
 Meander ☐ Property ☒  
 Rancho ☐ Other ☐  
 Date of Survey 7 JULY, 2011

## COORDINATES (Optional)

N. \_\_\_\_\_  
 E. \_\_\_\_\_  
 Zone \_\_\_\_\_ NAD27 ☐ NAD83 ☐  
 NAD83 Epoch \_\_\_\_\_  
 Elev. \_\_\_\_\_  
 Vert. Datum: NGVD29 ☐ NAVD88 ☐  
 Meas. Units: Metric ☐ Imperial ☐

Corner – Left as found ☐ Found and tagged ☐ Established ☒ Reestablished ☐ Rebuilt ☐

Identification and type of corner found: Evidence used to identify or procedure used to establish or reestablish the corner:

FOUND SUBDIVISION PIN MONUMENT PER MONU-  
MENT MAP FOR THIS SUBDIVISION FILED IN BOOK 43  
OF MAPS, PAGE 82 A ON DEC. 21, 1964, O.R., ALAMEDA  
COUNTY

A description of the physical condition of the monument as found and as set or reset:

SET 5/8" REBAR & PLASTIC CAP LS 5252

## SURVEYOR'S STATEMENT

This Corner Record was prepared by me or under my direction in conformance with

the Land Surveyor's Act on 15 AUGUST, 2011

Signed Jeffrey D. Black P.L.S. or R.C.E. No. 5252

## COUNTY SURVEYOR'S STATEMENT

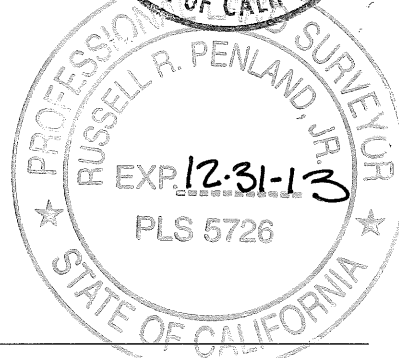
This Corner Record was received 9-29-11

and examined and filed 1-5-12

Signed Russell R. Penland, Jr. P.L.S. or R.C.E. No. 5726

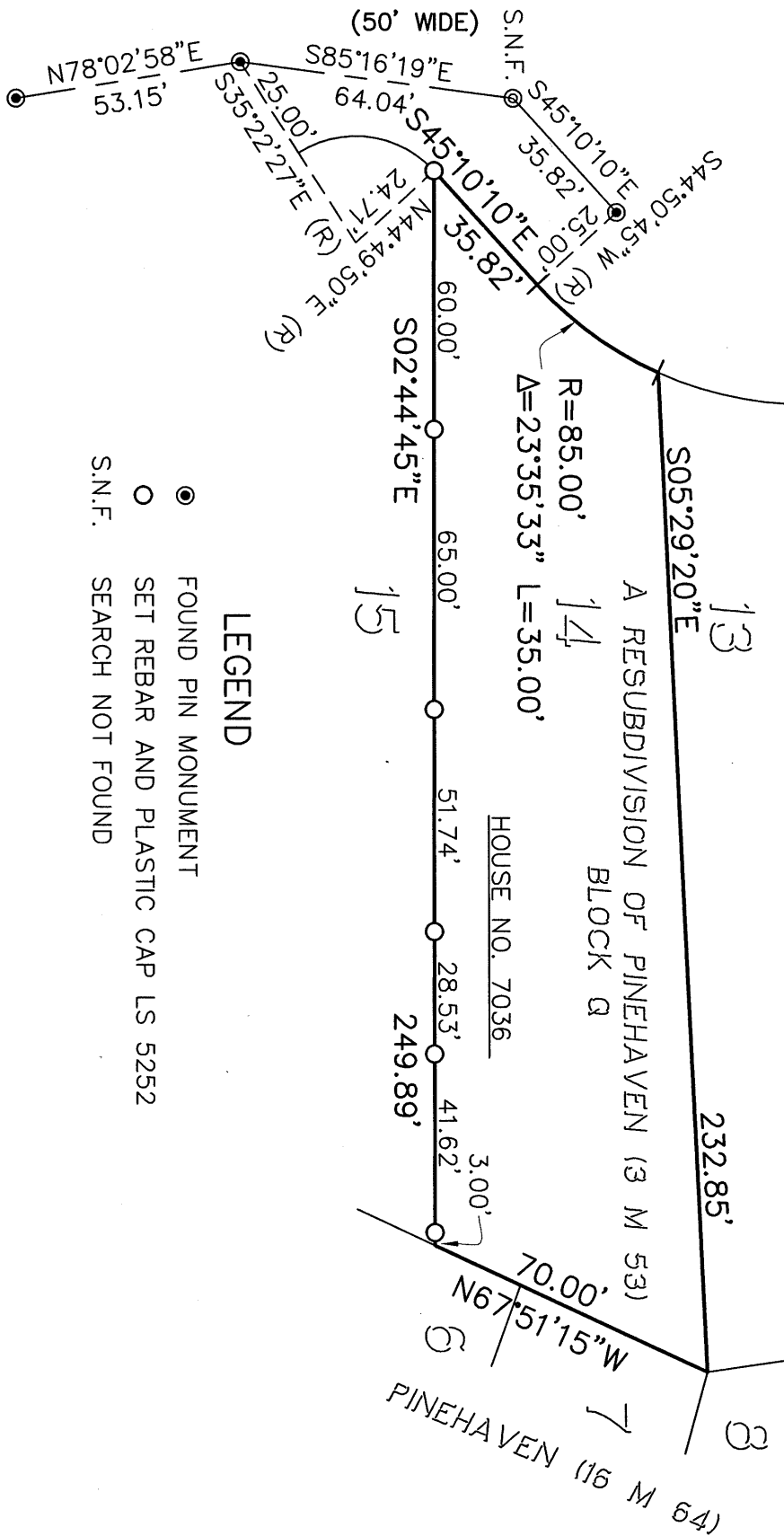
Title COUNTY SURVEYOR

County Surveyor's Comment \_\_\_\_\_



# BALSAM WAY

SCALE: 1"=40'



## LEGEND

- FOUND PIN MONUMENT
- SET REBAR AND PLASTIC CAP LS 5252
- S.N.F. SEARCH NOT FOUND

F.B. 1349

BALSAM WAY-CR.DWG

JOB NO. 11-8082