



**CÔNG TY CỔ PHẦN CÔNG NGHIỆP BẢO MINH CHÂU**  
**BAO MINH CHAU INDUSTRIES J.S.C**

Head office: Lai Xá - Kim Chung - Hoài Đức - Hà Nội

Tel: +84 (4) 3366 1268 Fax: +84 (4) 3366 2388 MST: 01 04 78 62 29

Factory: KCN Phùng - Thị trấn Phùng - Đan Phượng - Hà Nội

Tel: +84 (4) 3363 9906 Fax: +84 (4) 3363 9902

Email: [info@bmcswitchboard.com](mailto:info@bmcswitchboard.com) website: [www.bmcswitchboard.com](http://www.bmcswitchboard.com)

website: [www.bmcswitchboard.com](http://www.bmcswitchboard.com)

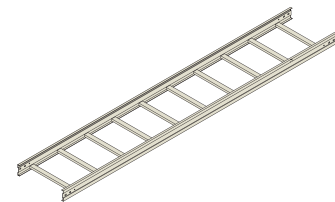


# THANG CÁP MÁNG CÁP CABLE LADDER CABLE TRAY

C A T A L O G U E

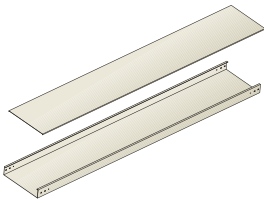


DANH MỤC SẢN PHẨM - PRODUCT SUMMARY



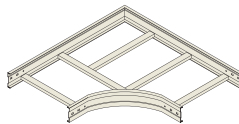
**L**  
Cable Ladder - Thang cáp

04



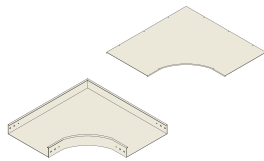
**T**  
Cable Tray - Máng cáp

14



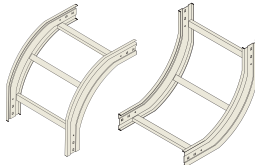
**LE**  
Ladder Elbow - Góc thang

06



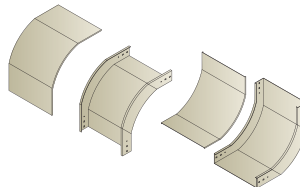
**TE**  
Tray Elbow - Góc máng

16



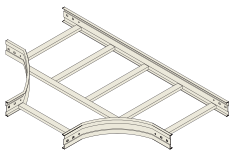
**LVE**  
Ladder Vertical Elbow  
Góc đứng thang

08



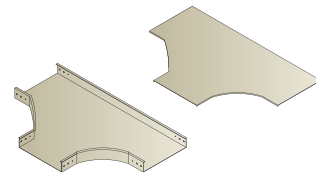
**TVE**  
Tray Vertical Elbow  
Góc đứng máng

18



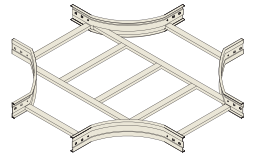
**LT**  
Ladder tee - Tê thang

10



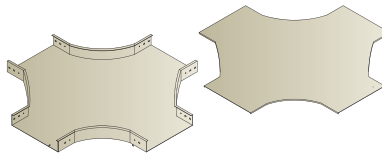
**TT**  
Tray tee - Tê máng

20



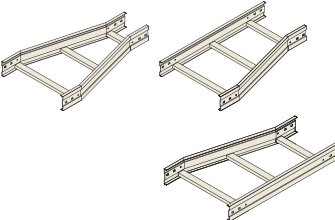
**LC**  
Ladder cross  
Chữ thập thang

12

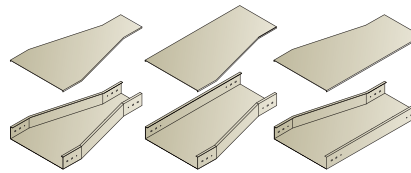


**TC**  
Tray cross  
Chữ thập máng

22



**LR**  
Ladder reduce  
Côn giảm thang



**TR**  
Tray Reduce  
Côn giảm máng

28

Accessories - Phụ kiện



CABLE LADDER - THANG CẤP

- **Material:** Black Steel or Galvanized Steel or ZAM Steel or Stainless Steel
- **Material Thickness:** 0.8mm; 1.0mm; 1.2mm; 1.5mm; 2.0mm
- **Finished:** + Electro Static Powder Coating: Standard: ASTM - D3359-93, ASTM - D3363-92A, ASTM - D4138-94 + Galvanaized Hot Deep zinz: Standard: ASTM -A123
- **Colour:** RAL 7032 as Standard, other colour depend on customer
- **Standard:** IEC - 61537

- **Vật liệu:** Tôn đen hoặc Tôn mạ kẽm,Tôn ZAM hoặc thép không gỉ
- **Chiều dày vật liệu:** 0.8mm; 1.0mm; 1.2mm; 1.5mm; 2.0mm
- **Lớp phủ bề mặt:** + Sơn tĩnh điện: Đáp ứng tiêu chuẩn: ASTM - D3359-93, ASTM - D3363-92A, ASTM - D4138-94 + Mạ kẽm nhúng nóng: ASTM -A123
- **Màu sắc:** Màu tiêu chuẩn RAL 7032, màu khác theo yêu cầu khách hàng.
- **Tiêu chuẩn áp dụng:** IEC - 61537

HỆ MÀU SƠN

RAL 7032

RAL 7035

RAL 9002

RAL 3026

RAL 5015

RAL 2007

Technical drawing of a cable ladder. The side view shows a ladder with a total length 'L' and a width of 150mm. The end view shows a width of 300mm. The drawing includes details of the rail structure (E Type and C Type) and the rung structure. Dimensions for the width (W) and height (H) are also indicated.

CABLE LADDER H80 - THANG CẤP H80						
		L		100*80*3000*1.2		
		Cable Ladder		W*H*L*t		
Item STT	Product Code Mã sản phẩm	Technical Specification / Thông số kỹ thuật				kg/m
		W (mm)	H (mm)	L (mm)	t (mm)	
1	L100*80*3000*1.2	100	80	3000	1.2	2.5
2	L200*80*3000*1.5	200			1.5	3.4
3	L300*80*3000*1.5	300				3.8
4	L400*80*3000*1.5	400				4.1
5	L500*80*3000*1.5	500				4.5
6	L600*80*3000*2.0	600			2.0	6.2
7	L700*80*3000*2.0	700				6.7
8	L800*80*3000*2.0	800				7.1
9	L900*80*3000*2.0	900				7.5
10	L1000*80*3000*2.0	1000				8.0
11	L1100*80*3000*2.0	1100				8.4
12	L1200*80*3000*2.0	1200				8.9

www.bmcswitchboard.com

04

CABLE LADDER - THANG CẤP

CABLE LADDER H100 - THANG CẤP H100						
		L		100*100*3000*1.2		
		Cable Ladder		W*H*L*t		
Item STT	Product Code Mã sản phẩm	Technical Specification / Thông số kỹ thuật				kg/m
		W (mm)	H (mm)	L (mm)	t (mm)	
1	L100*100*3000*1.2	100	100	3000	1.2	2.9
2	L200*100*3000*1.5	200			1.5	3.9
3	L300*100*3000*1.5	300				4.2
4	L400*100*3000*1.5	400				4.6
5	L500*100*3000*1.5	500				4.9
6	L600*100*3000*2.0	600			2.0	6.8
7	L700*100*3000*2.0	700				7.3
8	L800*100*3000*2.0	800				7.7
9	L900*100*3000*2.0	900				8.2
10	L1000*100*3000*2.0	1000				8.6
11	L1100*100*3000*2.0	1100				9.0
12	L1200*100*3000*2.0	1200				9.5

Photograph of a yellow cable ladder installed in a rack. The ladder is shown from a side-on perspective, highlighting its structure and the way it is mounted. The yellow color is prominent.

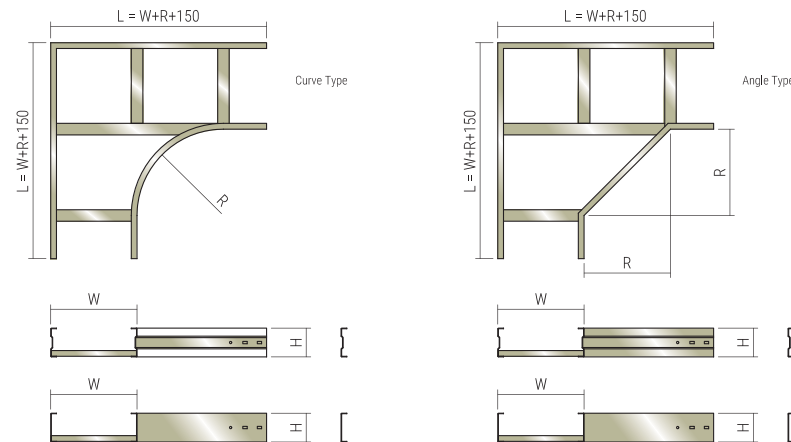
CABLE LADDER H150 - THANG CẤP H150						
		L		100*150*3000*1.2		
		Cable Ladder		W*H*L*t		
Item STT	Product Code Mã sản phẩm	Technical Specification / Thông số kỹ thuật				kg/m
		W (mm)	H (mm)	L (mm)	t (mm)	
1	L100*150*3000*1.2	100	150	3000	1.2	3.8
2	L200*150*3000*1.5	200			1.5	5.1
3	L300*150*3000*1.5	300				5.4
4	L400*150*3000*1.5	400				5.8
5	L500*150*3000*1.5	500				6.1
6	L600*150*3000*2.0	600			2.0	8.4
7	L700*150*3000*2.0	700				8.9
8	L800*150*3000*2.0	800				9.3
9	L900*150*3000*2.0	900				9.7
10	L1000*150*3000*2.0	1000				10.2
11	L1100*150*3000*2.0	1100				10.6
12	L1200*150*3000*2.0	1200				11.1

www.bmcswitchboard.com

05

BAO MINH CHAU INDUSTRIES J.S.C

- **Material:** Black Steel or Galvanized Steel or ZAM Steel or Stainless Steel
- **Material Thickness:** 0.8mm; 1.0mm; 1.2mm; 1.5mm; 2.0mm
- **Finished:** + Electro Static Powder Coating: Standard: ASTM - D3359-93, ASTM - D3363-92A, ASTM - D4138-94 + Galvanaized Hot Deep zinz: Standard: ASTM -A123
- **Colour:** RAL 7032 as Standard, other colour depend on customer
- **Standard:** IEC - 61537
- **Vật liệu:** Tôn đen hoặc Tôn mạ kẽm, Tôn ZAM hoặc thép không gỉ
- **Chiều dày vật liệu:** 0.8mm; 1.0mm; 1.2mm; 1.5mm; 2.0mm
- **Lớp phủ bề mặt:** + Sơn tĩnh điện: Đáp ứng tiêu chuẩn: ASTM - D3359-93, ASTM - D3363-92A, ASTM - D4138-94 + Mạ kẽm nhúng nóng: ASTM -A123
- **Màu sắc:** Màu tiêu chuẩn RAL 7032, màu khác theo yêu cầu khách hàng.
- **Tiêu chuẩn áp dụng:** IEC - 61537



Rail Structure		Rung Structure
E Type	C Type	
{	[	⌈

LE	100*80*400*1.2
Ladder Elbow	W*H*L*t

LE	100*100*400*1.2
Ladder Elbow	W*H*L*t

Item STT	Product Code Mã sản phẩm	Technical Specification / Thông số kỹ thuật					kg/pcs	
		W (mm)	H (mm)	L (mm)	R (mm)	t (mm)		
1	LE100*100*400*1.2	100	100	400	150	1.2	2.8	
2	LE200*100*550*1.5	200		550	200	1.5	4.5	
3	LE300*100*750*1.5	300		750	300		6.4	
4	LE400*100*850*1.5	400		850				
5	LE500*100*950*1.5	500		950				2.0
6	LE600*100*1050*2.0	600		1050		11.9		
7	LE700*100*1150*2.0	700		1150		14.3		
8	LE800*100*1250*2.0	800		1250	15.9			
9	LE900*100*1350*2.0	900		1350	17.4			
10	LE1000*100*1450*2.0	1000		1450	20.5			
11	LE1100*100*1550*2.0	1100		1550	22.2			
12	LE1200*100*1650*2.0	1200		1650	25.8			



LE	100*150*400*1.2
Ladder Elbow	W*H*L*t

[www.bmcswitchboard.com](http://www.bmcswitchboard.com)



LADDER VERTICAL ELBOW - GÓC ĐỨNG THANG

● **Material:** Black Steel or Galvanized Steel or ZAM Steel or Stainless Steel

● **Material Thickness:** 0.8mm; 1.0mm; 1.2mm; 1.5mm; 2.0mm

● **Finished:** + Electro Static Powder Coating: Standard: ASTM - D3359-93, ASTM - D3363-92A, ASTM - D4138-94  
+ Galvanaized Hot Deep zinz: Standard: ASTM -A123

● **Colour:** RAL 7032 as Standard, other colour depend on customer

● **Standard:** IEC - 61537

● **Vật liệu:** Tôn đen hoặc Tôn mạ kẽm,Tôn ZAM hoặc thép không gỉ

● **Chiều dày vật liệu:** 0.8mm; 1.0mm; 1.2mm; 1.5mm; 2.0mm

● **Lớp phủ bề mặt:** + Sơn tĩnh điện: Đáp ứng tiêu chuẩn: ASTM - D3359-93, ASTM - D3363-92A, ASTM - D4138-94  
+ Mạ kẽm nhúng nóng: ASTM -A123

● **Màu sắc:** Màu tiêu chuẩn RAL 7032, màu khác theo yêu cầu khách hàng.

● **Tiêu chuẩn áp dụng:** IEC - 61537

HỆ MÀU SƠN

RAL 7032

RAL 7035

RAL 9002

RAL 3026

RAL 5015

RAL 2007

Curve Type

L = H+R+150

W

L=H+R+150

Angle Type

L=H+R+150

W

L=H+R+150

Curve Type

L = H+R+150

W

L=H+R+150

Angle Type

L=H+R+150

W

L=H+R+150

Rail Structure

E Type

C Type

Rung Structure

LADDER VERTICAL ELBOW H80 - GÓC ĐỨNG THANG H80							LVE Ladder Vertical Elbow	100*80*380*1.2 W*H*L*t	
Item STT	Product Code Mã sản phẩm	Technical Specification / Thông số kỹ thuật					kg/pcs		
		W (mm)	H (mm)	L (mm)	R (mm)	t (mm)			
1	LVE100*80*380*1.2	100	80	380	150	1.2	1.6		
2	LVE200*80*430*1.5	200		430	200	1.5	2.9		
3	LVE300*80*530*1.5	300		530	300		3.7		
4	LVE400*80*530*1.5	400					4.5		
5	LVE500*80*530*1.5	500					5.2		
6	LVE600*80*530*2.0	600			2.0	8.1			
7	LVE700*80*530*2.0	700				9.1			
8	LVE800*80*530*2.0	800				10.2			
9	LVE900*80*530*2.0	900				11.2			
10	LVE1000*80*530*2.0	1000				12.3			
11	LVE1100*80*530*2.0	1100				13.4			
12	LVE1200*80*530*2.0	1200				14.4			

LADDER VETICAL ELBOW H100 - GÓC ĐỨNG THANG H100							LVE Ladder Vertical Elbow	100*100*400*1.2 W*H*L*t	
Item STT	Product Code Mã sản phẩm	Technical Specification / Thông số kỹ thuật					kg/pcs		
		W (mm)	H (mm)	L (mm)	R (mm)	t (mm)			
1	LVE100*100*400*1.2	100	100	400	150	1.2	2.3		
2	LVE200*100*450*1.5	200		450	200	1.5	3.3		
3	LVE300*100*550*1.5	300		550	300		3.8		
4	LVE400*100*550*1.5	400					4.3		
5	LVE500*100*550*1.5	500					4.8		
6	LVE600*100*550*2.0	600			2.0	7.0			
7	LVE700*100*550*2.0	700				7.6			
8	LVE800*100*550*2.0	800				8.2			
9	LVE900*100*550*2.0	900				8.8			
10	LVE1000*100*550*2.0	1000				9.5			
11	LVE1100*100*550*2.0	1100				10.1			
12	LVE1200*100*550*2.0	1200				10.7			

LADDER VETICAL ELBOW H150 - GÓC ĐỨNG THANG H150							L Cable Ladder	100*150*450*1.2 W*H*L*t	
Item STT	Product Code Mã sản phẩm	Technical Specification / Thông số kỹ thuật					kg/pcs		
		W (mm)	H (mm)	L (mm)	R (mm)	t (mm)			
1	LVE100*150*450*1.2	100	150	450	150	1.2	3.0		
2	LVE200*150*500*1.5	200		500	200	1.5	4.2		
3	LVE300*150*600*1.5	300		600	300		4.7		
4	LVE400*150*600*1.5	400					5.1		
5	LVE500*150*600*1.5	500					5.6		
6	LVE600*150*600*2.0	600			2.0	8.1			
7	LVE700*150*600*2.0	700				8.7			
8	LVE800*150*600*2.0	800				9.4			
9	LVE900*150*600*2.0	900				10.0			
10	LVE1500*150*600*2.0	1000				10.6			
11	LVE1150*150*600*2.0	1100				11.2			
12	LVE1200*150*600*2.0	1200				11.9			

www.bmcswitchboard.com

08

www.bmcswitchboard.com

09

BAO MINH CHAU INDUSTRIES J.S.C

LADDER TEE - TÊ THANG	
<ul style="list-style-type: none"><li>● <b>Material:</b> Black Steel or Galvanized Steel or ZAM Steel or Stainless Steel</li><li>● <b>Material Thickness:</b> 0.8mm; 1.0mm; 1.2mm; 1.5mm; 2.0mm</li><li>● <b>Finished:</b> + Electro Static Powder Coating: Standard: ASTM - D3359-93, ASTM - D3363-92A, ASTM - D4138-94 + Galvanaized Hot Deep zinz: Standard: ASTM -A123</li><li>● <b>Colour:</b> RAL 7032 as Standard, other colour depend on customer</li><li>● <b>Standard:</b> IEC – 61537</li></ul>	<ul style="list-style-type: none"><li>● <b>Vật liệu:</b> Tôn đen hoặc Tôn mạ kẽm,Tôn ZAM hoặc thép không gỉ</li><li>● <b>Chiều dày vật liệu:</b> 0.8mm; 1.0mm; 1.2mm; 1.5mm; 2.0mm</li><li>● <b>Lớp phủ bề mặt:</b> + Sơn tĩnh điện: Đáp ứng tiêu chuẩn: ASTM - D3359-93, ASTM - D3363-92A, ASTM - D4138-94 + Mạ kẽm nhúng nóng: ASTM -A123</li><li>● <b>Màu sắc:</b> Màu tiêu chuẩn RAL 7032, màu khác theo yêu cầu khách hàng.</li><li>● <b>Tiêu chuẩn áp dụng:</b> IEC – 61537</li></ul>

HỆ MÀU SƠN

RAL 7032

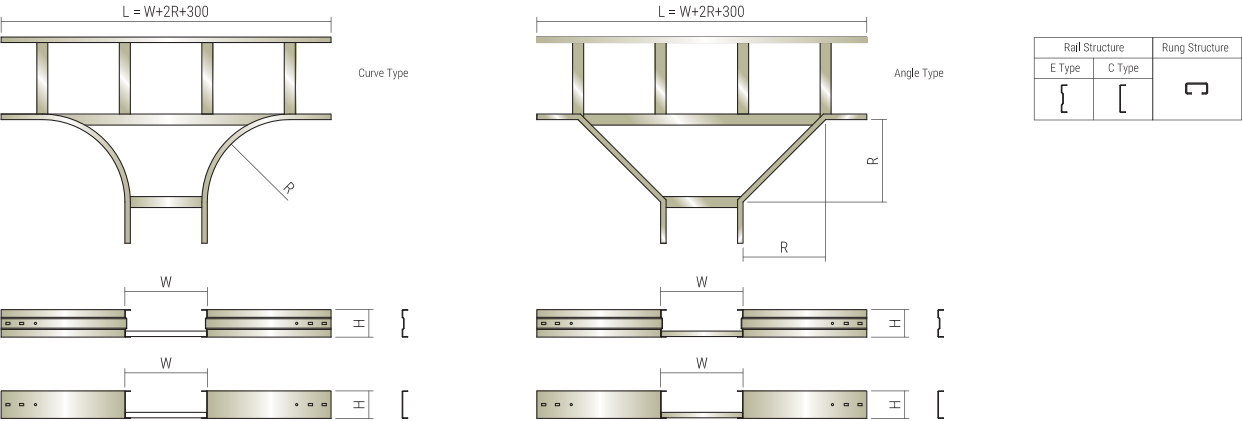
RAL 7035

RAL 9002

RAL 3026

RAL 5015

RAL 2007





LADDER CROSS - CHỮ THẬP THANG

● **Material:** Black Steel or Galvanized Steel or ZAM Steel or Stainless Steel

● **Material Thickness:** 0.8mm; 1.0mm; 1.2mm; 1.5mm; 2.0mm

● **Finished:** + Electro Static Powder Coating: Standard: ASTM - D3359-93, ASTM - D3363-92A, ASTM - D4138-94  
+ Galvanaized Hot Deep zinz: Standard: ASTM -A123

● **Colour:** RAL 7032 as Standard, other colour depend on customer

● **Standard:** IEC – 61537

● **Vật liệu:** Tôn đen hoặc Tôn mạ kẽm,Tôn ZAM hoặc thép không gỉ

● **Chiều dày vật liệu:** 0.8mm; 1.0mm; 1.2mm; 1.5mm; 2.0mm

● **Lớp phủ bề mặt:** + Sơn tĩnh điện: Đáp ứng tiêu chuẩn: ASTM - D3359-93, ASTM - D3363-92A, ASTM - D4138-94  
+ Mạ kẽm nhúng nóng: ASTM -A123

● **Màu sắc:** Màu tiêu chuẩn RAL 7032, màu khác theo yêu cầu khách hàng.

● **Tiêu chuẩn áp dụng:** IEC – 61537

HỆ MÀU SƠN

RAL 7032

RAL 7035

RAL 9002

RAL 3026

RAL 5015

RAL 2007

L=W+2R+300

Curve Type

L=W+2R+300

Angle Type

W

H

W

H

W

H

W

H

Rail Structure

E Type

C Type

Rung Structure

LADDER CROSS H80 - CHỮ THẬP THANG H80

Item STT	Product Code Mã sản phẩm	Technical Specification / Thông số kỹ thuật					kg/pcs	
		W (mm)	H (mm)	L (mm)	R (mm)	t (mm)		
1	LC100*80*700*1.2	100	80	700	150	1.2	3.9	
2	LC200*80*900*1.5	200		900	200	1.5	5.8	
3	LC300*80*1200*1.5	300		1200	300		6.6	
4	LC400*80*1300*1.5	400		1300			7.4	
5	LC500*80*1400*1.5	500		1400			8.8	
6	LC600*80*1500*2.0	600		1500	2.0	13.0		
7	LC700*80*1600*2.0	700		1600		15.4		
8	LC800*80*1700*2.0	800		1700		16.8		
9	LC900*80*1800*2.0	900		1800		18.2		
10	LC1000*80*1900*2.0	1000		1900		21.2		
11	LC1100*80*2000*2.0	1100		2000		22.7		
12	LC1200*80*2100*2.0	1200		2100		26.2		

LADDER CROSS - CHỮ THẬP THANG

LADDER CROSS H100 - CHỮ THẬP THANG H100

Item STT	Product Code Mã sản phẩm	Technical Specification / Thông số kỹ thuật					kg/pcs	
		W (mm)	H (mm)	L (mm)	R (mm)	t (mm)		
1	LC100*100*700*1.2	100	100	700	150	1.2	4.4	
2	LC200*100*900*1.5	200		900	200	1.5	6.4	
3	LC300*100*1200*1.5	300		1200	300		7.3	
4	LC400*100*1300*1.5	400		1300			8.1	
5	LC500*100*1400*1.5	500		1400			9.5	
6	LC600*100*1500*2.0	600		1500	2.0	13.9		
7	LC700*100*1600*2.0	700		1600		16.3		
8	LC800*100*1700*2.0	800		1700		17.7		
9	LC900*100*11000*2.0	900		1800		19.1		
10	LC1000*100*1900*2.0	1000		1900		22.1		
11	LC1100*100*2000*2.0	1100		2000		23.6		
12	LC1200*100*2100*2.0	1200		2100		27.1		

LADDER CROSS H150 - CHỮ THẬP THANG H150

Item STT	Product Code Mã sản phẩm	Technical Specification / Thông số kỹ thuật					kg/pcs	
		W (mm)	H (mm)	L (mm)	R (mm)	t (mm)		
1	LC100*150*700*1.2	100	150	700	150	1.2	5.8	
2	LC200*150*900*1.5	200		900	200	1.5	8.1	
3	LC300*150*1200*1.5	300		1200	300		9.0	
4	LC400*150*1300*1.5	400		1300			9.8	
5	LC500*150*1400*1.5	500		1400			11.2	
6	LC600*150*1500*2.0	600		1500	2.0	16.2		
7	LC700*150*1600*2.0	700		1600		18.5		
8	LC800*150*1700*2.0	800		1700		20.0		
9	LC900*150*11500*2.0	900		1800		21.4		
10	LC1000*150*1900*2.0	1000		1900		24.4		
11	LC1100*150*2000*2.0	1100		2000		25.9		
12	LC1200*150*2100*2.0	1200		2100		29.4		

www.bmcswitchboard.com

12

www.bmcswitchboard.com

13

BAO MINH CHAU INDUSTRIES J.S.C

LADDER REDUCE - CÔN GIẢM THANG

● **Material:** Black Steel or Galvanized Steel or ZAM Steel or Stainless Steel

● **Material Thickness:** 0.8mm; 1.0mm; 1.2mm; 1.5mm; 2.0mm

● **Finished:** + Electro Static Powder Coating: Standard: ASTM - D3359-93, ASTM - D3363-92A, ASTM - D4138-94  
+ Galvanaized Hot Deep zinz: Standard: ASTM -A123

● **Colour:** RAL 7032 as Standard, other colour depend on customer

● **Standard:** IEC – 61537

● **Vật liệu:** Tôn đen hoặc Tôn mạ kẽm,Tôn ZAM hoặc thép không gỉ

● **Chiều dày vật liệu:** 0.8mm; 1.0mm; 1.2mm; 1.5mm; 2.0mm

● **Lớp phủ bề mặt:** + Sơn tĩnh điện: Đáp ứng tiêu chuẩn: ASTM - D3359-93, ASTM - D3363-92A, ASTM - D4138-94  
+ Mạ kẽm nhúng nóng: ASTM -A123

● **Màu sắc:** Màu tiêu chuẩn RAL 7032, màu khác theo yêu cầu khách hàng.

● **Tiêu chuẩn áp dụng:** IEC – 61537

HỆ MÀU SƠN

RAL 7032

RAL 7035

RAL 9002

RAL 3026

RAL 5015

RAL 2007

Left Reduce

Center Reduce

Right Reduce

W1

W

W1

W

W1

W

E Type

C Type

Rung Structure

LADDER REDUCE H80 - CÔN GIẢM THANG H80

LR

Ladder Reduce

100\*80\*450\*1.2

W\*H\*L\*t

Item STT	Product Code Mã sản phẩm	Technical Specification / Thông số kỹ thuật				kg/pcs	
		W (mm)	H (mm)	L (mm)	t (mm)		
1	LR100*80*450*1.2	100	80	450	1.2	1.1	
2	LR200*80*500*1.5	200		500	1.5	1.7	
3	LR300*80*600*1.5	300		600		2.3	
4	LR400*80*600*1.5	400				2.5	
5	LR500*80*600*1.5	500				2.7	
6	LR600*80*600*2.0	600		2.0	2.0	3.7	
7	LR700*80*600*2.0	700				4.0	
8	LR800*80*600*2.0	800				4.3	
9	LR900*80*600*2.0	900				4.5	
10	LR1000*80*600*2.0	1000				4.8	
11	LR1100*80*600*2.0	1100				5.0	
12	LR1200*80*600*2.0	1200				5.3	

LADDER REDUCE - CÔN GIẢM THANG

LADDER REDUCE H100 - CÔN GIẢM THANG H100

LR

Ladder Reduce

100\*100\*450\*1.2

W\*H\*L\*t

Item STT	Product Code Mã sản phẩm	Technical Specification / Thông số kỹ thuật				kg/pcs	
		W (mm)	H (mm)	L (mm)	t (mm)		
1	LR100*100*450*1.2	100	100	450	1.2	1.3	
2	LR200*100*500*1.5	200		500	1.5	1.9	
3	LR300*100*600*1.5	300		600		2.5	
4	LR400*100*600*1.5	400				2.8	
5	LR500*100*600*1.5	500				3.0	
6	LR600*100*600*2.0	600		2.0	2.0	4.1	
7	LR700*100*600*2.0	700				4.4	
8	LR800*100*600*2.0	800				4.6	
9	LR900*100*600*2.0	900				4.9	
10	LR1000*100*600*2.0	1000				5.2	
11	LR1100*100*600*2.0	1100				5.4	
12	LR1200*100*600*2.0	1200				5.7	

LADDER REDUCE H150 - CÔN GIẢM THANG H150

LR

Ladder Reduce

100\*150\*450\*1.2

W\*H\*L\*t

Item STT	Product Code Mã sản phẩm	Technical Specification / Thông số kỹ thuật				kg/pcs	
		W (mm)	H (mm)	L (mm)	t (mm)		
1	LR100*150*450*1.2	100	150	450	1.2	1.7	
2	LR200*150*500*1.5	200		500	1.5	2.5	
3	LR300*150*600*1.5	300		600		3.2	
4	LR400*150*600*1.5	400				3.5	
5	LR500*150*600*1.5	500				3.7	
6	LR600*150*600*2.0	600		2.0	2.0	5.0	
7	LR700*150*600*2.0	700				5.3	
8	LR800*150*600*2.0	800				5.6	
9	LR900*150*600*2.0	900				5.8	
10	LR1000*150*600*2.0	1000				6.1	
11	LR1100*150*600*2.0	1100				6.4	
12	LR1200*150*600*2.0	1200				6.6	

www.bmcswitchboard.com

14

www.bmcswitchboard.com

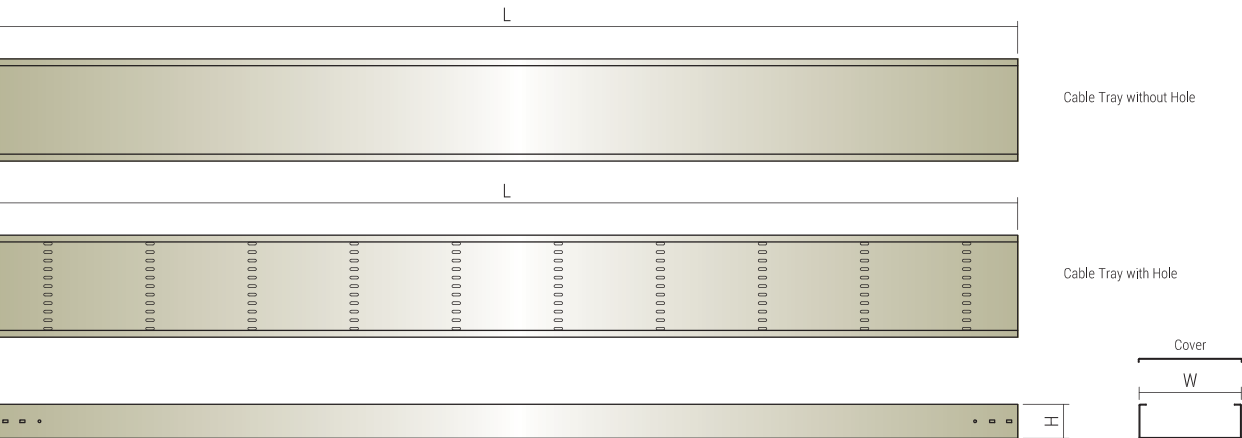
15

BAO MINH CHAU INDUSTRIES J.S.C



CABLE TRAY - MĂNG CÁP	
<ul style="list-style-type: none"><li>● <b>Material:</b> Black Steel or Galvanized Steel or ZAM Steel or Stainless Steel</li><li>● <b>Material Thickness:</b> 0.8mm; 1.0mm; 1.2mm; 1.5mm; 2.0mm</li><li>● <b>Finished:</b> + Electro Static Powder Coating: Standard: ASTM - D3359-93, ASTM - D3363-92A, ASTM - D4138-94 + Galvanaized Hot Deep zinz: Standard: ASTM -A123</li><li>● <b>Colour:</b> RAL 7032 as Standard, other colour depend on customer</li><li>● <b>Standard:</b> IEC – 61537</li></ul>	<ul style="list-style-type: none"><li>● <b>Vật liệu:</b> Tôn đen hoặc Tôn mạ kẽm,Tôn ZAM hoặc thép không gỉ</li><li>● <b>Chiều dày vật liệu:</b> 0.8mm; 1.0mm; 1.2mm; 1.5mm; 2.0mm</li><li>● <b>Lớp phủ bề mặt:</b> + Sơn tĩnh điện: Đáp ứng tiêu chuẩn: ASTM - D3359-93, ASTM - D3363-92A, ASTM - D4138-94 + Mạ kẽm nhúng nóng: ASTM -A123</li><li>● <b>Màu sắc:</b> Màu tiêu chuẩn RAL 7032, màu khác theo yêu cầu khách hàng.</li><li>● <b>Tiêu chuẩn áp dụng:</b> IEC – 61537</li></ul>

HỆ MÀU SƠNRAL 7032RAL 7035RAL 9002RAL 3026RAL 5015RAL 2007



CABLE TRAY H50 - MĂNG CÁP H50					T Cable Tray	50*50*3000*1.0 W*H*L*t
Item STT	Product Code Mã sản phẩm	Technical Specification / Thông số kỹ thuật				kg/m
		W (mm)	H (mm)	L (mm)	t (mm)	
1	T50*50*3000*1.0	50	50	3000	1.0	1.3
2	T100*50*3000*1.0	100				1.7
3	T150*50*3000*1.2	150			1.2	2.5
4	T200*50*3000*1.2	200				3.0
5	T250*50*3000*1.2	250				3.5
6	T300*50*3000*1.2	300				4.0
7	T350*50*3000*1.2	350				4.4
8	T400*50*3000*1.5	400			1.5	6.1
9	T450*50*3000*1.5	450				6.7
10	T500*50*3000*1.5	500				7.3
11	T550*50*3000*1.5	550				7.9
12	T600*50*3000*1.5	600				8.5

CABLE TRAY H80 - MĂNG CÁP H80					T Cable Tray	100*80*3000*1.2 W*H*L*t
Item STT	Product Code Mã sản phẩm	Technical Specification / Thông số kỹ thuật				kg/m
		W (mm)	H (mm)	L (mm)	t (mm)	
1	T100*80*3000*1.2	100	80	3000	1.2	2.6
2	T150*80*3000*1.2	150				3.1
3	T200*80*3000*1.2	200				3.6
4	T250*80*3000*1.2	250				4.1
5	T300*80*3000*1.2	300				4.5
6	T350*80*3000*1.2	350			5.0	
7	T400*80*3000*1.5	400			1.5	6.8
8	T450*80*3000*1.5	450				7.4
9	T500*80*3000*1.5	500				8.0
10	T550*80*3000*1.5	550				8.6
11	T600*80*3000*1.5	600				9.2



CABLE TRAY H100 - MĂNG CÁP H100					T Cable Tray	100*100*3000*1.2 W*H*L*t
Item STT	Product Code Mã sản phẩm	Technical Specification / Thông số kỹ thuật				kg/m
		W (mm)	H (mm)	L (mm)	t (mm)	
1	T100*100*3000*1.2	100	100	3000	1.2	3.0
2	T150*100*3000*1.2	150				3.5
3	T200*100*3000*1.2	200				4.0
4	T250*100*3000*1.2	250				4.4
5	T300*100*3000*1.2	300				4.9
6	T350*100*3000*1.2	350			5.4	
7	T400*100*3000*1.5	400			1.5	7.3
8	T450*100*3000*1.5	450				7.9
9	T500*100*3000*1.5	500				8.5
10	T550*100*3000*1.5	550				9.1
11	T600*100*3000*1.5	600				9.7

TRAY ELBOW - GÓC MẮNG

● **Material:** Black Steel or Galvanized Steel or ZAM Steel or Stainless Steel

● **Material Thickness:** 0.8mm; 1.0mm; 1.2mm; 1.5mm; 2.0mm

● **Finished:** + Electro Static Powder Coating: Standard: ASTM - D3359-93, ASTM - D3363-92A, ASTM - D4138-94  
+ Galvanaized Hot Deep zinz: Standard: ASTM -A123

● **Colour:** RAL 7032 as Standard, other colour depend on customer

● **Standard:** IEC – 61537

● **Vật liệu:** Tôn đen hoặc Tôn mạ kẽm,Tôn ZAM hoặc thép không gỉ

● **Chiều dày vật liệu:** 0.8mm; 1.0mm; 1.2mm; 1.5mm; 2.0mm

● **Lớp phủ bề mặt:** + Sơn tĩnh điện: Đáp ứng tiêu chuẩn: ASTM - D3359-93, ASTM - D3363-92A, ASTM - D4138-94  
+ Mạ kẽm nhúng nóng: ASTM -A123

● **Màu sắc:** Màu tiêu chuẩn RAL 7032, màu khác theo yêu cầu khách hàng.

● **Tiêu chuẩn áp dụng:** IEC – 61537

HỆ MÀU SƠN

RAL 7032

RAL 7035

RAL 9002

RAL 3026

RAL 5015

RAL 2007

TRAY ELBOW H50 - GÓC MẮNG H50							TE Tray Elbow	50*50*300*1.0 W*H*L*t			
Item STT	Product Code Mã sản phẩm	Technical Specification / Thông số kỹ thuật						kg/pcs			
		W (mm)	H (mm)	L (mm)	R (mm)	t (mm)					
1	TE50*50*300*1.0	50	50	300	100	1.0		1.0			
2	TE100*50*400*1.0	100		400	150			1.3			
3	TE150*50*500*1.2	150		500	200	1.2		2.1			
4	TE200*50*550*1.2	200		550	200			2.6			
5	TE250*50*700*1.2	250		700	300			3.1			
6	TE300*50*750*1.2	300		750				3.8			
7	TE350*50*800*1.2	350		800				4.4			
8	TE400*50*850*1.5	400		850	1.5			6.4			
9	TE450*50*900*1.5	450		900				7.3			
10	TE500*50*950*1.5	500		950				8.4			
11	TE550*50*1000*1.5	550		1000				9.4			
12	TE600*50*1050*1.5	600		1050				10.5			

www.bmcswitchboard.com

18

TRAY ELBOW - GÓC MẮNG

TRAY ELBOW H80 - GÓC MẮNG H80							TE Tray Elbow	100*80*400*1.2 W*H*L*t		
Item STT	Product Code Mã sản phẩm	Technical Specification / Thông số kỹ thuật						kg/pcs		
		W (mm)	H (mm)	L (mm)	R (mm)	t (mm)				
1	TE100*80*400*1.2	100	80	400	150	1.2		2.0		
2	TE150*80*500*1.2	150		500	200			2.5		
3	TE200*80*550*1.2	200		550	200			3.0		
4	TE250*80*700*1.2	250		700	300			3.6		
5	TE300*80*750*1.2	300		750				4.2		
6	TE350*80*800*1.2	350		800				4.9		
7	TE400*80*850*1.5	400		850	1.5			7.1		
8	TE450*80*900*1.5	450		900				8.0		
9	TE500*80*950*1.5	500		950				9.1		
10	TE550*80*1000*1.5	550		1000				10.1		
11	TE600*80*1050*1.5	600		1050				11.3		

TRAY ELBOW H100 - GÓC MẮNG H100							TE Tray Elbow	100*100*400*1.2 W*H*L*t		
Item STT	Product Code Mã sản phẩm	Technical Specification / Thông số kỹ thuật						kg/pcs		
		W (mm)	H (mm)	L (mm)	R (mm)	t (mm)				
1	TE100*100*400*1.2	100	100	400	150	1.2		2.3		
2	TE150*100*500*1.2	150		500	200			2.7		
3	TE200*100*550*1.2	200		550	200			3.3		
4	TE250*100*700*1.2	250		700	300			4.0		
5	TE300*100*750*1.2	300		750				4.5		
6	TE350*100*800*1.2	350		800				5.3		
7	TE400*80*850*1.5	400		850	1.5			7.5		
8	TE450*100*900*1.5	450		900				8.5		
9	TE500*100*950*1.5	500		950				9.5		
10	TE550*100*1000*1.5	550		1000				10.7		
11	TE600*100*1050*1.5	600		1050				11.9		

www.bmcswitchboard.com

19

BAO MINH CHAU INDUSTRIES J.S.C



TRAY VERTICAL ELBOW - GÓC ĐỨNG MÁNG

- Material: Black Steel or Galvanized Steel or ZAM Steel or Stainless Steel
- Material Thickness: 0.8mm; 1.0mm; 1.2mm; 1.5mm; 2.0mm
- Finished: + Electro Static Powder Coating: Standard: ASTM - D3359-93, ASTM - D3363-92A, ASTM - D4138-94 + Galvanaized Hot Deep zinz: Standard: ASTM -A123
- Colour: RAL 7032 as Standard, other colour depend on customer
- Standard: IEC – 61537

- Vật liệu: Tôn đen hoặc Tôn mạ kẽm,Tôn ZAM hoặc thép không gỉ
- Chiều dày vật liệu: 0.8mm; 1.0mm; 1.2mm; 1.5mm; 2.0mm
- Lớp phủ bề mặt: + Sơn tĩnh điện: Đáp ứng tiêu chuẩn: ASTM - D3359-93, ASTM - D3363-92A, ASTM - D4138-94 + Mạ kẽm nhúng nóng: ASTM -A123
- Màu sắc: Màu tiêu chuẩn RAL 7032, màu khác theo yêu cầu khách hàng.
- Tiêu chuẩn áp dụng: IEC – 61537

HỆ MÀU SƠN

RAL 7032

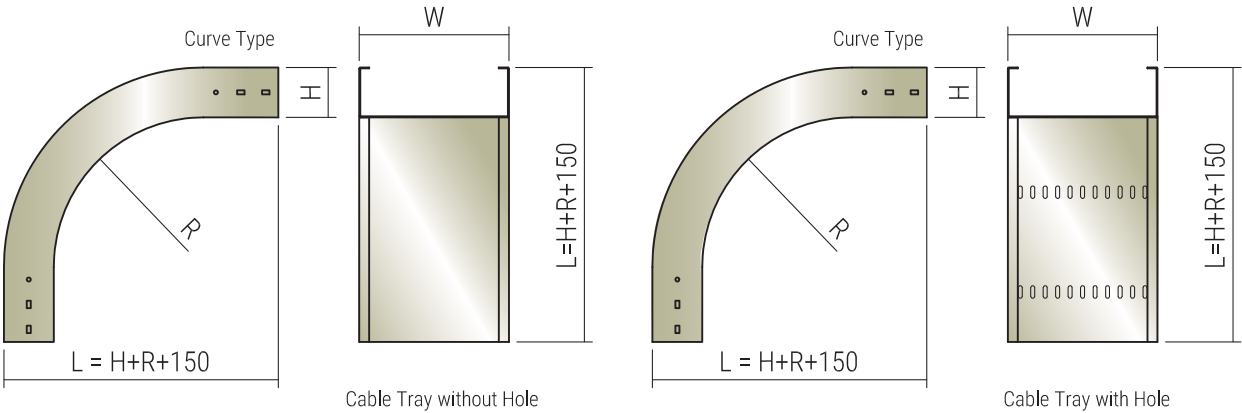
RAL 7035

RAL 9002

RAL 3026

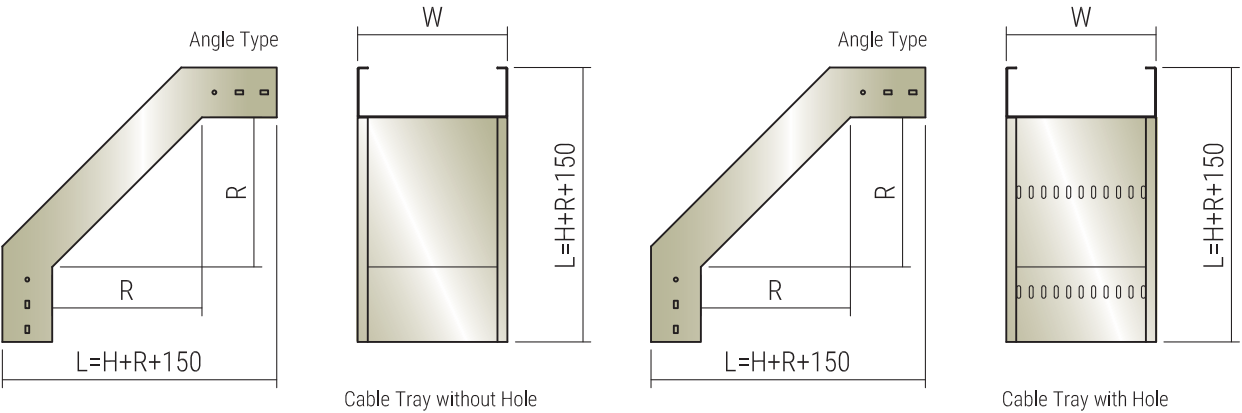
RAL 5015

RAL 2007



TRAY VERTICAL ELBOW H50 - GÓC ĐỨNG MÁNG H50							TVE Tray Vertical Elbow	50*50*300*1.0 W*H*L*t
Item STT	Product Code Mã sản phẩm	Technical Specification / Thông số kỹ thuật					kg/pcs	
		W (mm)	H (mm)	L (mm)	R (mm)	t (mm)		
1	TVE50*50*300*1.0	50	50	300	100	1.0	0.9	
2	TVE100*50*350*1.0	100		350	150		1.3	
3	TVE150*50*400*1.2	150		400	200	1.2	1.8	
4	TVE200*50*400*1.2	200		400	200		2.1	
5	TVE250*50*500*1.2	250		500	300		2.5	
6	TVE300*50*500*1.2	300		500			2.7	
7	TVE350*50*500*1.2	350		500			3.1	
8	TVE400*50*500*1.5	400		500		1.5	4.2	
9	TVE450*50*500*1.5	450		500			4.6	
10	TVE500*50*500*1.5	500		500	5.1			
11	TVE550*50*500*1.5	550		500	5.4			
12	TVE600*50*500*1.5	600		500	5.9			

TRAY VERTICAL ELBOW H80 - GÓC ĐỨNG MÁNG H80							TVE Tray Vertical Elbow	100*80*350*1.2 W*H*L*t
Item STT	Product Code Mã sản phẩm	Technical Specification / Thông số kỹ thuật					kg/pcs	
		W (mm)	H (mm)	L (mm)	R (mm)	t (mm)		
1	TVE100*80*350*1.2	100	80	380	150	1.2	1.6	
2	TVE150*80*400*1.2	150		430	200		2.0	
3	TVE200*80*400*1.2	200		430	200		2.3	
4	TVE250*80*500*1.2	250		530	300		2.6	
5	TVE300*80*500*1.2	300		530			2.9	
6	TVE350*80*500*1.2	350		530			3.2	
7	TVE400*80*500*1.5	400		530		1.5	4.5	
8	TVE450*80*500*1.5	450		530			4.8	
9	TVE500*80*500*1.5	500		530	5.3			
10	TVE550*80*500*1.5	550		530	5.7			
11	TVE600*80*500*1.5	600		530	6.0			



TRAY VERTICAL ELBOW H100 - GÓC ĐỨNG MÁNG H100							TVE Tray Vertical Elbow	100*100*350*1.2 W*H*L*t
Item STT	Product Code Mã sản phẩm	Technical Specification / Thông số kỹ thuật					kg/pcs	
		W (mm)	H (mm)	L (mm)	R (mm)	t (mm)		
1	TVE100*100*350*1.2	100	100	400	150	1.2	1.8	
2	TVE150*100*400*1.2	150		450	200		2.1	
3	TVE200*100*400*1.2	200		450	200		2.4	
4	TVE250*100*500*1.2	250		550	300		2.7	
5	TVE300*100*500*1.2	300		550		3.0		
6	TVE350*100*500*1.2	350		550		3.4		
7	TVE400*100*500*1.5	400		550		1.5	4.6	
8	TVE450*100*500*1.5	450		550			5.0	
9	TVE500*100*500*1.5	500		550			5.4	
10	TVE550*100*500*1.5	550		550			5.8	
11	TVE600*100*500*1.5	600		550	6.2			

TRAY TEE - TÊ THANG	
<ul style="list-style-type: none"><li>● <b>Material:</b> Black Steel or Galvanized Steel or ZAM Steel or Stainless Steel</li><li>● <b>Material Thickness:</b> 0.8mm; 1.0mm; 1.2mm; 1.5mm; 2.0mm</li><li>● <b>Finished:</b> + Electro Static Powder Coating: Standard: ASTM - D3359-93, ASTM - D3363-92A, ASTM - D4138-94 + Galvanaized Hot Deep zinz: Standard: ASTM -A123</li><li>● <b>Colour:</b> RAL 7032 as Standard, other colour depend on customer</li><li>● <b>Standard:</b> IEC – 61537</li></ul>	<ul style="list-style-type: none"><li>● <b>Vật liệu:</b> Tôn đen hoặc Tôn mạ kẽm,Tôn ZAM hoặc thép không gỉ</li><li>● <b>Chiều dày vật liệu:</b> 0.8mm; 1.0mm; 1.2mm; 1.5mm; 2.0mm</li><li>● <b>Lớp phủ bề mặt:</b> + Sơn tĩnh điện: Đáp ứng tiêu chuẩn: ASTM - D3359-93, ASTM - D3363-92A, ASTM - D4138-94 + Mạ kẽm nhúng nóng: ASTM -A123</li><li>● <b>Màu sắc:</b> Màu tiêu chuẩn RAL 7032, màu khác theo yêu cầu khách hàng.</li><li>● <b>Tiêu chuẩn áp dụng:</b> IEC – 61537</li></ul>

HỆ MÀU SƠN

RAL 7032

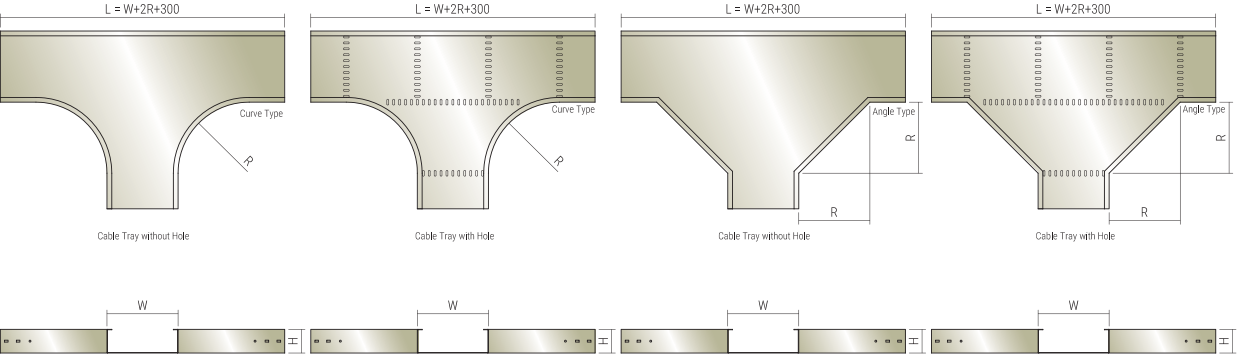
RAL 7035

RAL 9002

RAL 3026

RAL 5015

RAL 2007



TRAY TEE H50 - TÊ MÁNG H50						TT Tray Tee	50*50*550*1.0 W*H*L*t
Item STT	Product Code Mã sản phẩm	Technical Specification / Thông số kỹ thuật					kg/pcs
		W (mm)	H (mm)	L (mm)	R (mm)	t (mm)	
1	TT50*50*550*1.0	50	50	550	100	1.0	1.0
2	TT100*50*700*1.0	100		700	150		1.3
3	TT150*50*850*1.2	150		850	200	1.2	2.1
4	TT200*50*900*1.2	200		900	200		2.6
5	TT250*50*1150*1.2	250		1150	300		3.1
6	TT300*50*1200*1.2	300		1200			3.8
7	TT350*50*1250*1.2	350		1250			4.4
8	TT400*50*1300*1.5	400		1300		1.5	6.4
9	TT450*50*1350*1.5	450		1350			7.3
10	TT500*50*1400*1.5	500		1400	8.4		
11	TT550*50*1450*1.5	550		1450	9.4		
12	TT600*50*1500*1.5	600		1500	10.5		

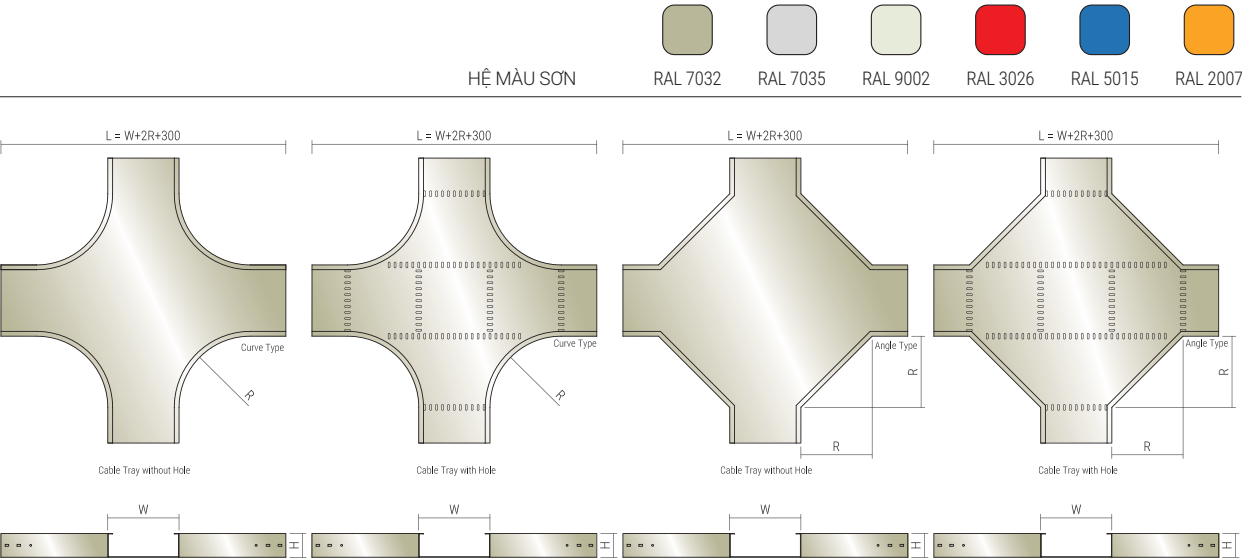
TRAY TEE H80 - TÊ MÁNG H80						TT Tray Tee	100*80*700*1.2 W*H*L*t
Item STT	Product Code Mã sản phẩm	Technical Specification / Thông số kỹ thuật					kg/pcs
		W (mm)	H (mm)	L (mm)	R (mm)	t (mm)	
1	TT100*80*700*1.2	100	80	700	150	1.2	2.0
2	TT150*80*850*1.2	150		850	200		2.5
3	TT200*80*900*1.2	200		900	200		3.0
4	TT250*80*1150*1.2	250		1150	300		3.6
5	TT300*80*1200*1.2	300		1200			4.2
6	TT350*80*1250*1.2	350		1250			4.9
7	TT400*80*1300*1.5	400		1300		1.5	7.1
8	TT450*80*1350*1.5	450		1350			8.0
9	TT500*80*1400*1.5	500		1400	9.1		
10	TT550*80*1450*1.5	550		1450	10.1		
11	TT600*80*1500*1.5	600		1500	11.3		



TRAY TEE H100 - TÊ MÁNG H100						TT Tray Tee	100*100*400*1.2 W*H*L*t
Item STT	Product Code Mã sản phẩm	Technical Specification / Thông số kỹ thuật					kg/pcs
		W (mm)	H (mm)	L (mm)	R (mm)	t (mm)	
1	TT100*100*700*1.2	100	100	700	150	1.2	2.3
2	TT150*100*850*1.2	150		850	200		2.7
3	TT200*100*900*1.2	200		900	200		3.3
4	TT250*100*1150*1.2	250		1150	300		4.0
5	TT300*100*1200*1.2	300		1200			4.5
6	TT350*100*1250*1.2	350		1250			5.3
7	TT400*100*1300*1.5	400		1300		1.5	7.5
8	TT450*100*1350*1.5	450		1350			8.5
9	TT500*100*1400*1.5	500		1400	9.5		
10	TT550*100*1450*1.5	550		1450	10.7		
11	TT600*100*1500*1.5	600		1500	11.9		



TRAY CROSS - CHỮ THẬP MÁNG	
<ul style="list-style-type: none"><li>● <b>Material:</b> Black Steel or Galvanized Steel or ZAM Steel or Stainless Steel</li><li>● <b>Material Thickness:</b> 0.8mm; 1.0mm; 1.2mm; 1.5mm; 2.0mm</li><li>● <b>Finished:</b> + Electro Static Powder Coating: Standard: ASTM - D3359-93, ASTM - D3363-92A, ASTM - D4138-94 + Galvanaized Hot Deep zinz: Standard: ASTM -A123</li><li>● <b>Colour:</b> RAL 7032 as Standard, other colour depend on customer</li><li>● <b>Standard:</b> IEC – 61537</li></ul>	<ul style="list-style-type: none"><li>● <b>Vật liệu:</b> Tôn đen hoặc Tôn mạ kẽm,Tôn ZAM hoặc thép không gỉ</li><li>● <b>Chiều dày vật liệu:</b> 0.8mm; 1.0mm; 1.2mm; 1.5mm; 2.0mm</li><li>● <b>Lớp phủ bề mặt:</b> + Sơn tĩnh điện: Đáp ứng tiêu chuẩn: ASTM - D3359-93, ASTM - D3363-92A, ASTM - D4138-94 + Mạ kẽm nhúng nóng: ASTM -A123</li><li>● <b>Màu sắc:</b> Màu tiêu chuẩn RAL 7032, màu khác theo yêu cầu khách hàng.</li><li>● <b>Tiêu chuẩn áp dụng:</b> IEC – 61537</li></ul>



TRAY CROSS H50 - CHỮ THẬP MÁNG H50						TC Tray Cross	50*50*550*1.0 W*H*L*t
Item STT	Product Code Mã sản phẩm	Technical Specification / Thông số kỹ thuật					kg/pcs
		W (mm)	H (mm)	L (mm)	R (mm)	t (mm)	
1	TC50*50*550*1.0	50	50	550	100	1.0	1.7
2	TC100*50*700*1.0	100		700	150		2.0
3	TC150*50*850*1.2	150		850	200	1.2	2.8
4	TC200*50*900*1.2	200		900	200		3.3
5	TC250*50*1150*1.2	250		1150	300		3.8
6	TC300*50*1200*1.2	300		1200			4.3
7	TC350*50*1250*1.2	350		1250			4.9
8	TC400*50*1300*1.5	400		1300		1.5	7.0
9	TC450*50*1350*1.5	450		1350			7.8
10	TC500*50*1400*1.5	500		1400	8.7		
11	TC550*50*1450*1.5	550		1450	9.7		
12	TC600*50*1500*1.5	600		1500	10.7		

TRAY CROSS H80 - CHỮ THẬP MÁNG H80						TC Tray Cross	100*80*700*1.2 W*H*L*t
Item STT	Product Code Mã sản phẩm	Technical Specification / Thông số kỹ thuật					kg/pcs
		W (mm)	H (mm)	L (mm)	R (mm)	t (mm)	
1	TC100*80*700*1.2	100	80	700	150	1.2	3.0
2	TC150*80*850*1.2	150		850	200		3.5
3	TC200*80*900*1.2	200		900	200		3.9
4	TC250*80*1150*1.2	250		1150	300		4.4
5	TC300*80*1200*1.2	300		1200			4.9
6	TC350*80*1250*1.2	350		1250			5.6
7	TC400*80*1300*1.5	400		1300		1.5	7.7
8	TC450*80*1350*1.5	450		1350			8.6
9	TC500*80*1400*1.5	500		1400	9.4		
10	TC550*80*1450*1.5	550		1450	10.5		
11	TC600*80*1500*1.5	600		1500	11.4		



TRAY CROSS H100 - CHỮ THẬP MÁNG H100						TC Tray Cross	100*100*700*1.2 W*H*L*t
Item STT	Product Code Mã sản phẩm	Technical Specification / Thông số kỹ thuật					kg/pcs
		W (mm)	H (mm)	L (mm)	R (mm)	t (mm)	
1	TC100*100*700*1.2	100	100	700	150	1.2	3.5
2	TC150*100*850*1.2	150		850	200		3.9
3	TC200*100*900*1.2	200		900	200		4.3
4	TC250*100*1150*1.2	250		1150	300		4.8
5	TC300*100*1200*1.2	300		1200		5.4	
6	TC350*100*1250*1.2	350		1250		5.9	
7	TC400*100*1300*1.5	400		1300		1.5	8.2
8	TC450*100*1350*1.5	450		1350			9.1
9	TC500*100*1400*1.5	500		1400			10.0
10	TC550*100*1450*1.5	550		1450			11.0
11	TC600*100*1500*1.5	600		1500	12.0		

TRAY REDUCE - CÔN GIẢM MẮNG

- Material: Black Steel or Galvanized Steel or ZAM Steel or Stainless Steel
- Material Thickness: 0.8mm; 1.0mm; 1.2mm; 1.5mm; 2.0mm
- Finished: + Electro Static Powder Coating: Standard: ASTM - D3359-93, ASTM - D3363-92A, ASTM - D4138-94 + Galvanaized Hot Deep zinz: Standard: ASTM -A123
- Colour: RAL 7032 as Standard, other colour depend on customer
- Standard: IEC – 61537

- Vật liệu: Tôn đen hoặc Tôn mạ kẽm,Tôn ZAM hoặc thép không gỉ
- Chiều dày vật liệu: 0.8mm; 1.0mm; 1.2mm; 1.5mm; 2.0mm
- Lớp phủ bề mặt: + Sơn tĩnh điện: Đáp ứng tiêu chuẩn: ASTM - D3359-93, ASTM - D3363-92A, ASTM - D4138-94 + Mạ kẽm nhúng nóng: ASTM -A123
- Màu sắc: Màu tiêu chuẩn RAL 7032, màu khác theo yêu cầu khách hàng.
- Tiêu chuẩn áp dụng: IEC – 61537

HỆ MÀU SƠN

RAL 7032

RAL 7035

RAL 9002

RAL 3026

RAL 5015

RAL 2007

Left Reduce

Center Reduce

Right Reduce

Cable Tray without Hole

Left Reduce

Center Reduce

Right Reduce

Cable Tray with Hole

TRAY REDUCE H50 - CÔN GIẢM MẮNG H50						
		TR Tray Reduce		50*50*450*1.0 W*H*L*t		
Item STT	Product Code Mã sản phẩm	Technical Specification / Thông số kỹ thuật				kg/pcs
		W (mm)	H (mm)	L (mm)	t (mm)	
1	TR50*50*450*1.0	50	50	450	1.0	0.6
2	TR100*50*450*1.0	100		450		0.8
3	TR150*50*450*1.2	150		450	1.2	1.1
4	TR200*50*500*1.2	200		500		1.5
5	TR250*50*600*1.2	250		600		2.1
6	TR300*50*600*1.2	300	600		1.2	2.4
7	TR350*50*600*1.2	350				2.6
8	TR400*50*600*1.5	400			1.5	3.7
9	TR450*50*600*1.5	450				4.0
10	TR500*50*600*1.5	500				4.4
11	TR550*50*600*1.5	550				4.7
12	TR600*50*600*1.5	600				5.1

TRAY REDUCE - CÔN GIẢM MẮNG

TRAY REDUCE H80 - CÔN GIẢM MẮNG H80						
		TR Tray Reduce		100*80*450*1.2 W*H*L*t		
Item STT	Product Code Mã sản phẩm	Technical Specification / Thông số kỹ thuật				kg/pcs
		W (mm)	H (mm)	L (mm)	t (mm)	
1	TR100*80*450*1.2	100	80	450	1.2	1.2
2	TR150*80*450*1.2	150		450		1.4
3	TR200*80*500*1.2	200		500		1.8
4	TR250*80*600*1.2	250		600		2.5
5	TR300*80*600*1.2	300		1.5	2.7	
6	TR350*80*600*1.2	350			3.0	
7	TR400*80*600*1.5	400			4.1	
8	TR450*80*600*1.5	450			4.5	
9	TR500*80*600*1.5	500			4.8	
10	TR550*80*600*1.5	550			5.2	
11	TR600*80*600*1.5	600			5.5	

TRAY REDUCE H100 - CÔN GIẢM MẮNG H100						
		TR Tray Reduce		100*100*450*1.2 W*H*L*t		
Item STT	Product Code Mã sản phẩm	Technical Specification / Thông số kỹ thuật				kg/pcs
		W (mm)	H (mm)	L (mm)	t (mm)	
1	TR100*100*450*1.2	100	100	450	1.2	1.4
2	TR150*100*450*1.2	150		450		1.6
3	TR200*100*500*1.2	200		500		2.0
4	TR250*100*600*1.2	250		600		2.6
5	TR300*100*600*1.2	300		1.5	2.9	
6	TR350*100*600*1.2	350			3.2	
7	TR400*100*600*1.5	400			4.4	
8	TR450*100*600*1.5	450			4.7	
9	TR500*100*600*1.5	500			5.1	
10	TR550*100*600*1.5	550			5.4	
11	TR600*100*600*1.5	600			5.8	

www.bmcswitchboard.com

26

www.bmcswitchboard.com

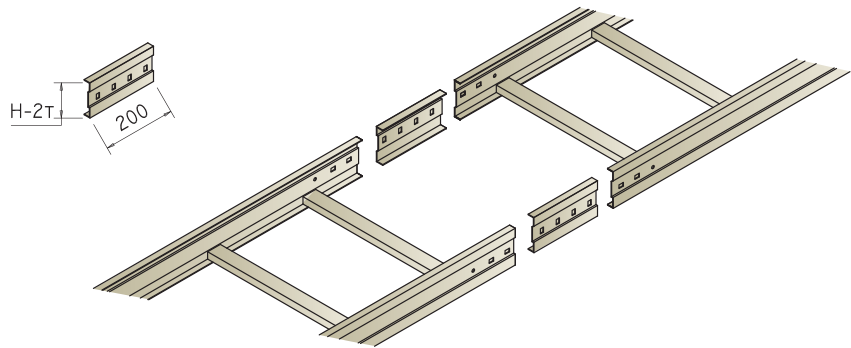
27

BAO MINH CHAU INDUSTRIES J.S.C

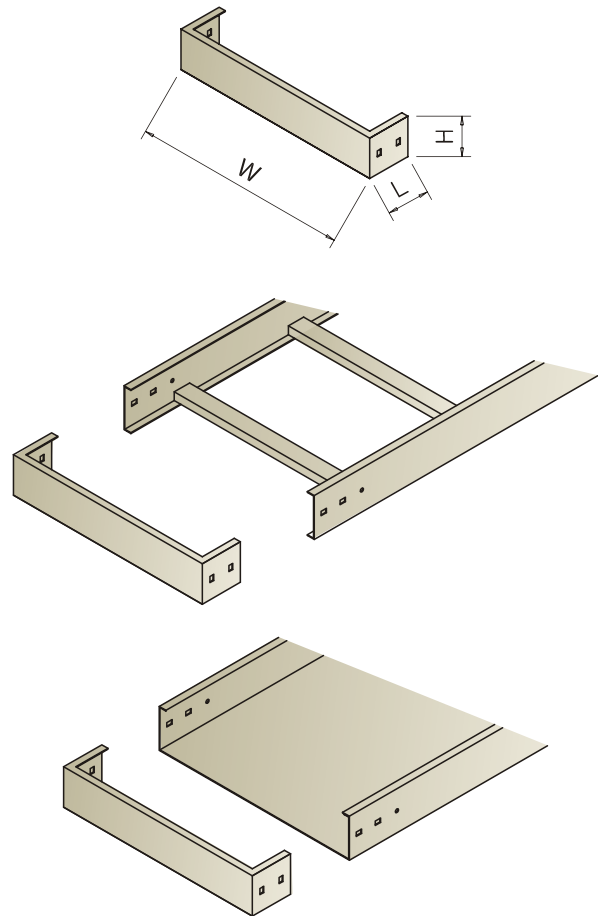


ACCESSORIES - PHỤ KIỆN

CABLE LADDER JOINT  
NỐI THANG

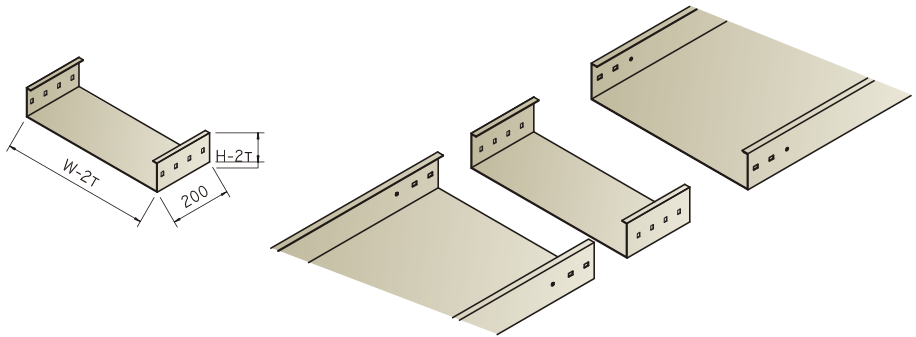


AND COVER  
BỊT THANG - MÁNG CÁP



ACCESSORIES - PHỤ KIỆN

TRAY JOINT  
NỐI MÁNG



NUT M8  
ECU M8



BOLD M8X15  
BULONG M8X15



ĐỆM PHẪNG



ĐỆM VÊNH







***Increase your values*** - Gia tăng giá trị của bạn