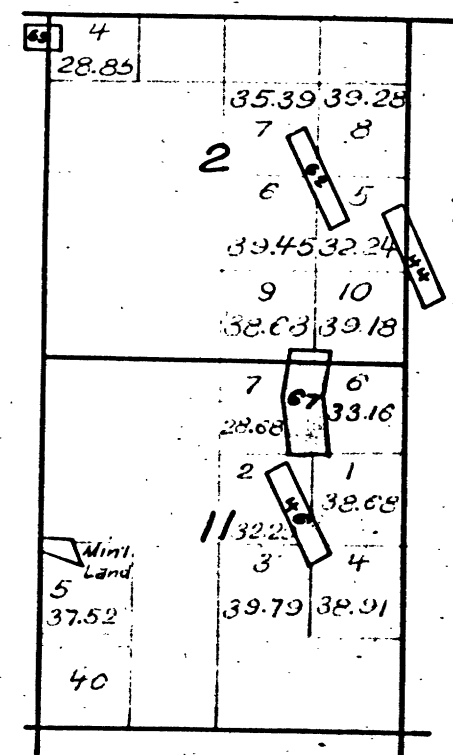


Township N° 6 North, Range N° 13 East, Mount Diablo Meridian, California.

T. N° 6 N. R. N° 13 E. M. D. M.

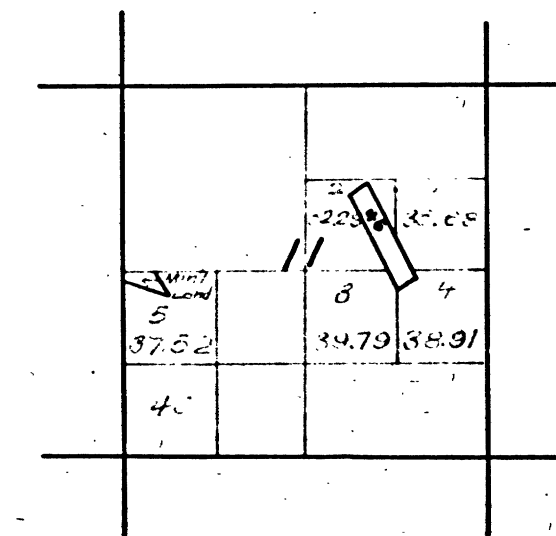


26 11 67 Oriental Quartz Mine.

The above diagram showing amendments to Sections 2 and 11, Township N° 6 North, Range N° 13 East, Mount Diablo Meridian, is correctly copied from the original map as amended and on file in this Office.
U.S. Surveyor General's Office,
San Francisco California
October 4th 1887.

R. P. Hammond, Jr.
U.S. Surv. Gen'l Cal.

T. 6 N. R. 13 E.

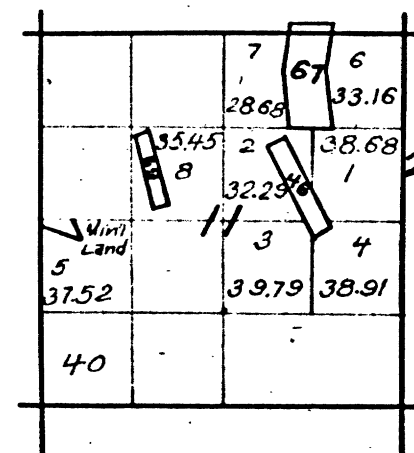


Segregation of agricultural from mineral land, Lot 5, Sec. 11. See field notes of Dep. Surv. A. Lascy, dated January 22nd 1885.

The above diagram showing amendments to Section 11, Township N° 6 North, Range N° 13 East, Mount Diablo Meridian, is correctly copied from the original map as amended and on file in this Office.
U.S. Surveyor General's Office,
San Francisco, California,
January 22nd 1885.

W. T. Brown
U.S. Surv. Gen'l Cal.

T. 6 N. R. 13 E. M. D. M.

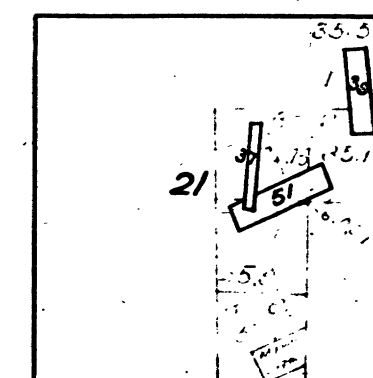


2732-69 Soap Root Quartz Mine. V 81 - 33

The above diagram of Section 11, Township N° 6 North, Range N° 13 East, Mount Diablo Meridian, is correctly copied from the original map, as amended and on file in this Office.
U.S. Surveyor General's Office,
San Francisco, California,
August 4th 1888.

R. P. Hammond, Jr.
U.S. Surv. Gen'l Cal.

T. 6 N. R. 13 E. M. D. M.



202178 37 Poor Man Quartz Mine. 151-11
184 39 Wolverine 150-29 (189)
1893 51 Lawson.

Lot 5, Sec. 21, segregation of agricultural portion of S.W. 1/4 of S.E. 1/4, Sec. 21, surveyed Nov. 22, 1894, by A. H. Coulter.

The above diagram of Section 21 of Township N° 6 North, Range N° 13 East, Mount Diablo Meridian, California, is correctly copied from the original file in this Office.
U.S. Surveyor General's Office,
San Francisco, California,
March 6th 1901.

J. M. Gleaves
U.S. Surveyor General
for California.

DEPARTMENT OF THE INTERIOR,
GENERAL LAND OFFICE,
Washington, D. C. Feb. 5, 1902.

I hereby certify that this is a true copy of the plat of official survey of the lands to which it relates, on file in this office.

H. W. Loring
Recorder, General Land Office.

