

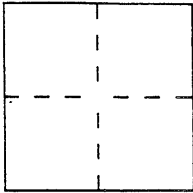
CORNER RECORD

96-175-5 Cr 75
CR 822

City of BERKELEY

Document Number _____
County of ALAMEDA, California

Brief Legal Description Portions of Lots 25 THROUGH 28, BLOCK 12, 25 M 69



CORNER TYPE

Government Corner ☐ Control ☐
Meander ☐ Property ☒
Rancho ☐ Other ☐
Date of Survey 10-18-96

COORDINATES (Optional)

N. _____
E. _____
Zone _____ Datum _____
Elev. _____

Corner — Left as found ☐ Found and tagged ☐ Established ☒ Reestablished ☐ Rebuilt ☐

Identification and type of corner found: Evidence used to identify or procedure used to establish or reestablish the corner:

FOUND POINTS AS SHOWN ON REVERSE.

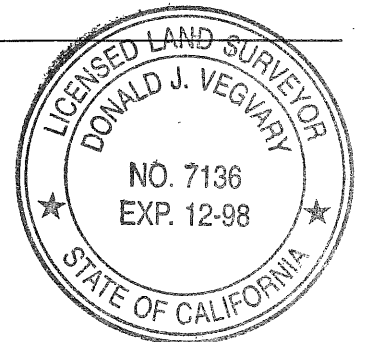
A description of the physical condition of the monument as found and as set or reset: _____

SET POINTS AS SHOWN ON REVERSE.

SURVEYOR'S STATEMENT

This Corner Record was prepared by me or under my direction in conformance with the Land Surveyors' Act on 10-22 1996.

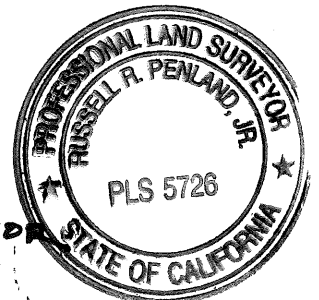
Signed [Signature] L.S. or R.C.E. Number LS-7136



COUNTY SURVEYOR'S STATEMENT

This Corner Record was received 10-25- 1996 and examined and filed 10-24- 1996.

Signed Russell R. Penland, Jr. Title DEPUTY COUNTY SURVEYOR



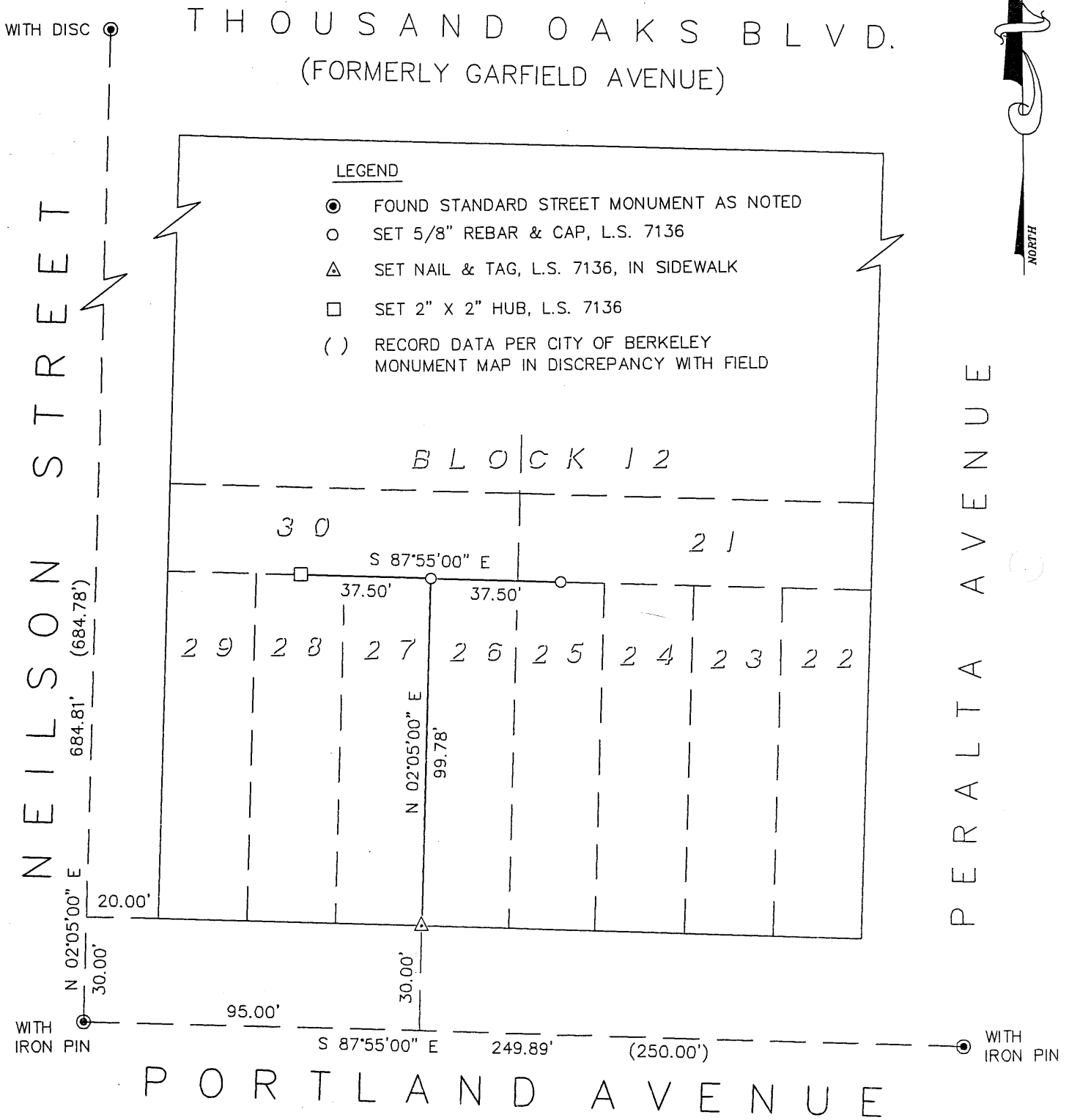
County Surveyor's Comment _____

✓

CORNER RECORD

PORTIONS OF LOTS 25 THROUGH 28 - BLOCK 12
SOLANO AVENUE TERRACE - 25 M 69

SCALE: 1"=40'



IVAN VEGVARY & ASSOCIATES
CIVIL ENGINEER - LAND SURVEYOR
40 TERRA TERESA
LAFAYETTE, CA 94549
(510) 947-1051

PAGE 2 OF 2

96091-CR-10/22/96