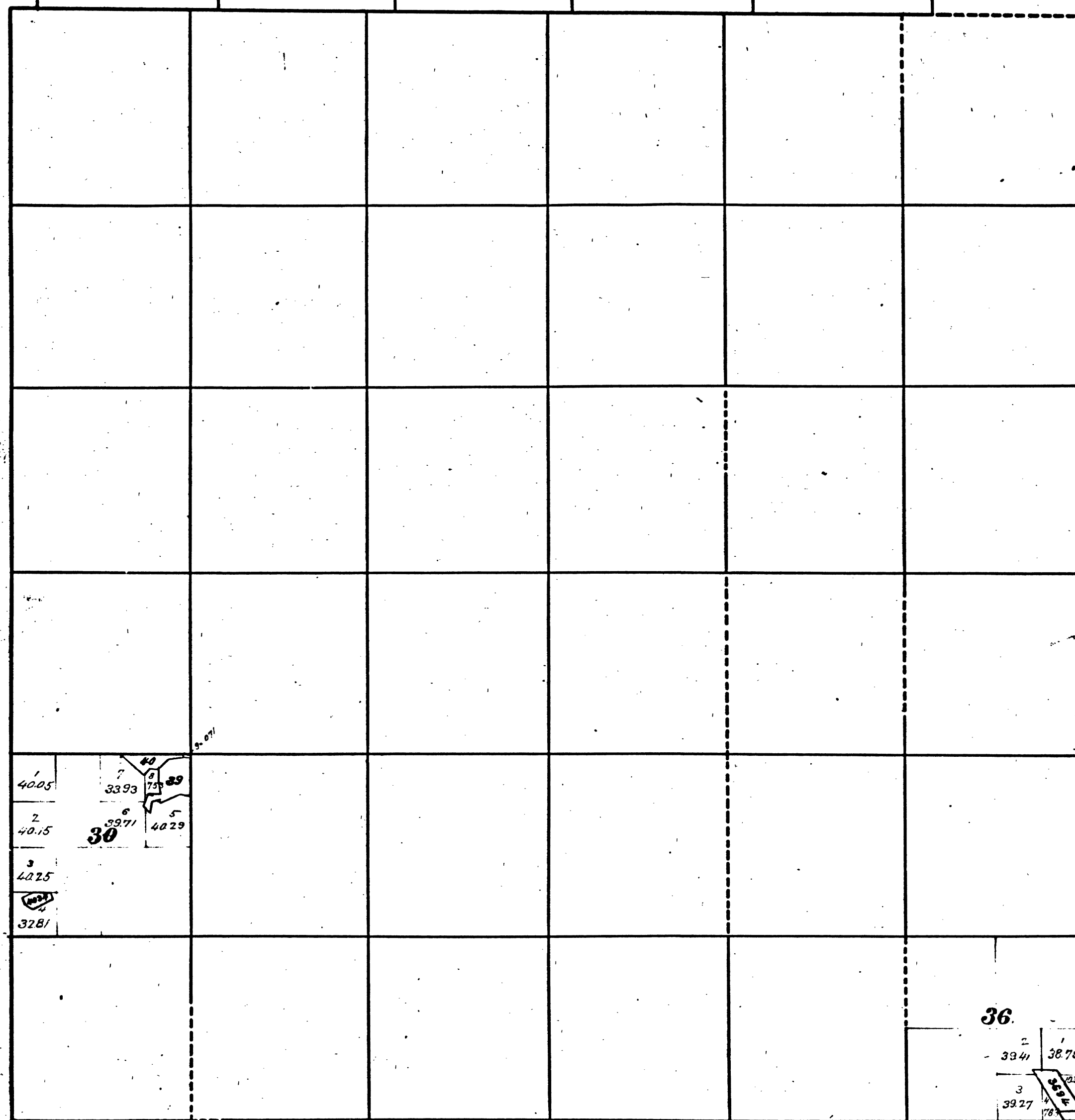


Township N° 3 North,

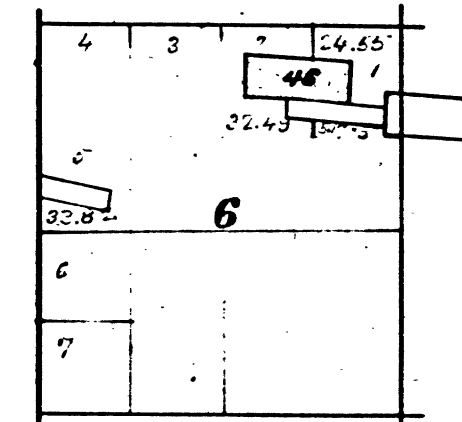
Range N° 14 East,

Mount Diablo Meridian.



39 Bonney. P.M.  
40 Bowling Green. P.M.  
3694 Oregon Mid Missouriian Ribbon Rock  
4034 Vigilance Old Tuolumne & Magnolia. O. Mg C's  
Magnolia Loc  
Old Tuolumne -  
T.A.B.

T. 3. N. R. 14. E. M.D.M.



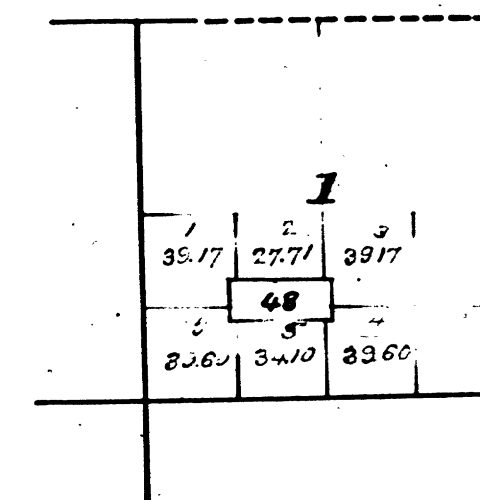
46. Pay Rock Quartz Mine

The above diagram of Section 6, Township N° 3 North, Range N° 14 East, Mount Diablo Meridian is correctly copied from the original map as amended and on file in this office.

U. S. Surveyor General's Office.  
San Francisco California  
July 10th 1882

*Thos Wagner*  
U.S. Surv. Genl. Cal.

T. 3. N. R. 14. E. M.D.M.



Lot N° 48 Collier Quartz Mine.

DEPARTMENT OF THE INTERIOR,  
GENERAL LAND OFFICE,  
Washington, D. C. *March 1884*  
I hereby certify that this is a true copy  
of the plat of official survey of the lands  
to which it relates, on file in this office.

*Wm. Brown*  
Recorder, General Land Office.

The above diagram showing amendments to Sec. 1, Township N° 3 North, Range N° 14 East, Mount Diablo Meridian, is correctly copied from the original map as amended and on file in this office.

U. S. Surveyor General's Office.  
San Francisco California  
April 2nd 1884

*W. H. Brown*  
U. S. Surv Genl. Colo.

The above diagram of Sections 30 and 36, Township N° 3 North Range N° 14 East, Mount Diablo Meridian California, is correctly constructed from official plat on file in this Office.  
U. S. Surveyor General's Office.  
San Francisco California  
December 5, 1903.

*W. S. Graham*  
U. S. Surveyor-General for California

41 258

T 3 N R 14 E M D

CHAINS

CHAINS

10 20 40 60 80 120

BIM 125