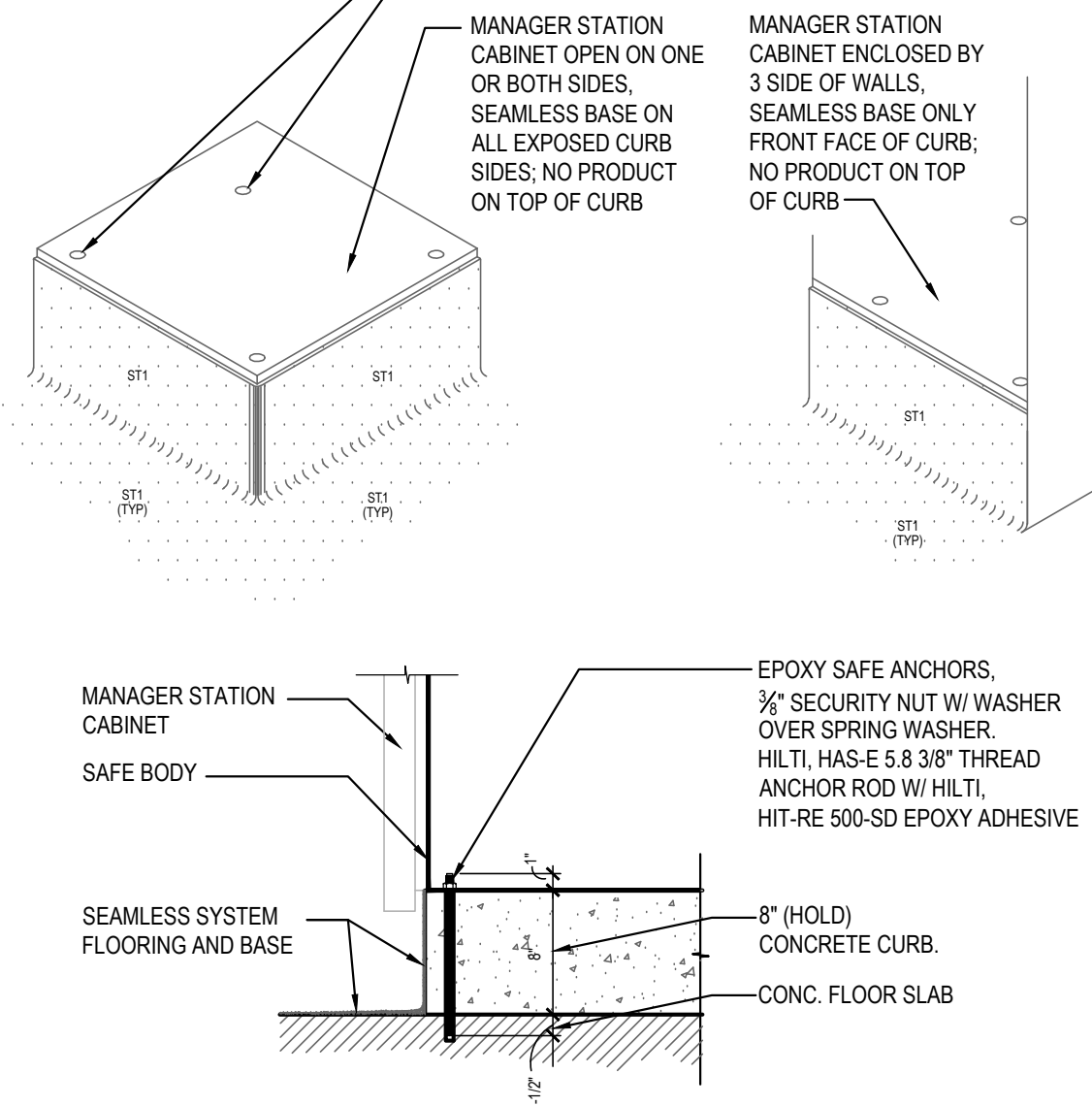


MANAGER CABINET STATION CURB SIZES REFER FLR. PLAN FOR LOCATION

- 1) IF CABINET IS ENCLOSED BY 3 SIDE OF WALLS:
8" H X 24" W X 48-1/2" L (CONCRETE CURB ONLY, NOT INCLUDE TILE BASE)
TILE ONLY ON FRONT FACE (EXPOSED CURB). THIS APPLY TO PROTOTYPE BUILDING LAYOUTS.
- 2) IF CABINET ENCLOSED BY ONLY (1) ONE WALL:
8" H X 24" W X 48" L (CONCRETE CURB ONLY, NOT INCLUDE TILE BASE)
TILE FRONT AND (1) SIDE FACE (EXPOSED CURB)
- 3) IF CABINET OPEN WITH NO WALLS:
8" H X 24" W X 46" L (CONCRETE CURB ONLY, NOT INCLUDE TILE BASE)
TILE ALL 3 SIDES OF THE CURB

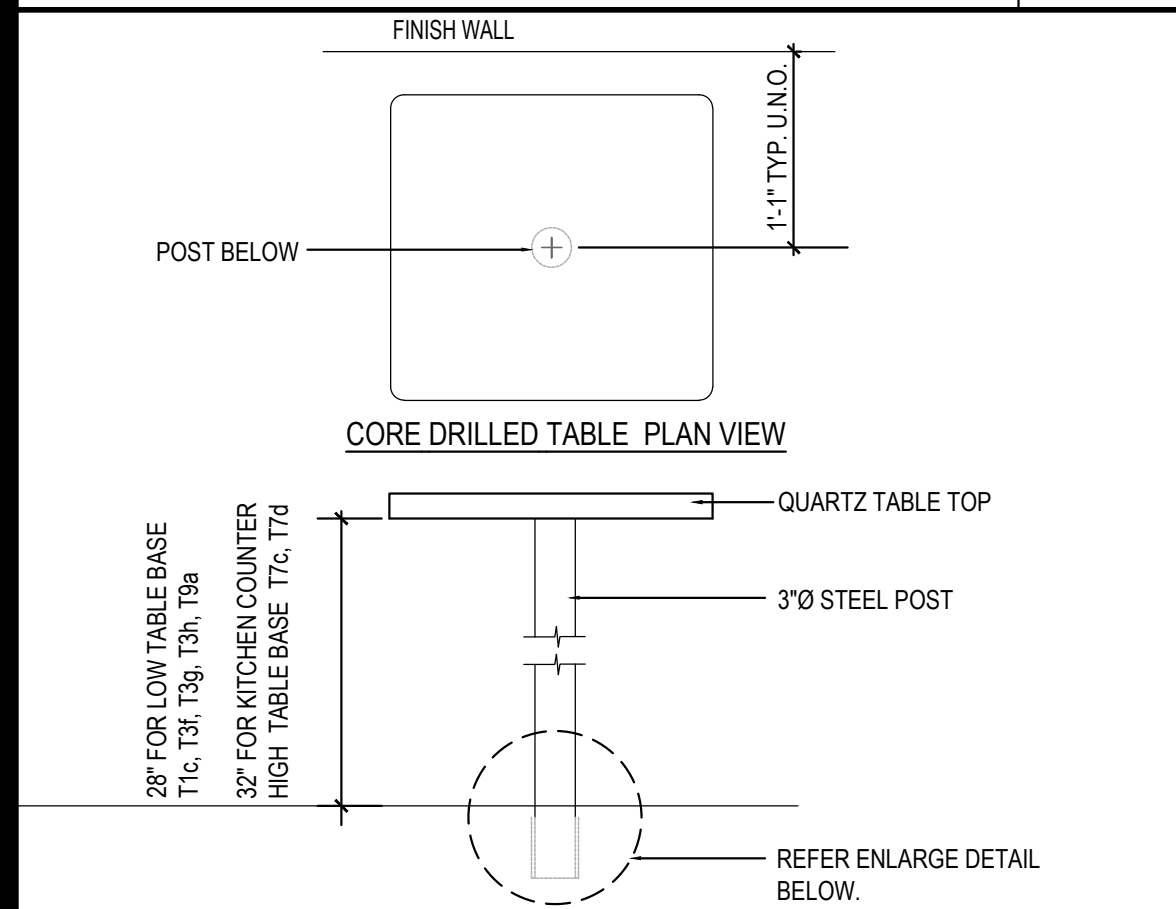
DRILL 1/2" HOLES THRU CURB INTO FLOOR SLAB. REFER SECTION
DETAIL BELOW. HOLE LOCATIONS VARIES DEPEND ON SAFE MODEL.
CHECK PANDA PM FOR SAFE MODEL.



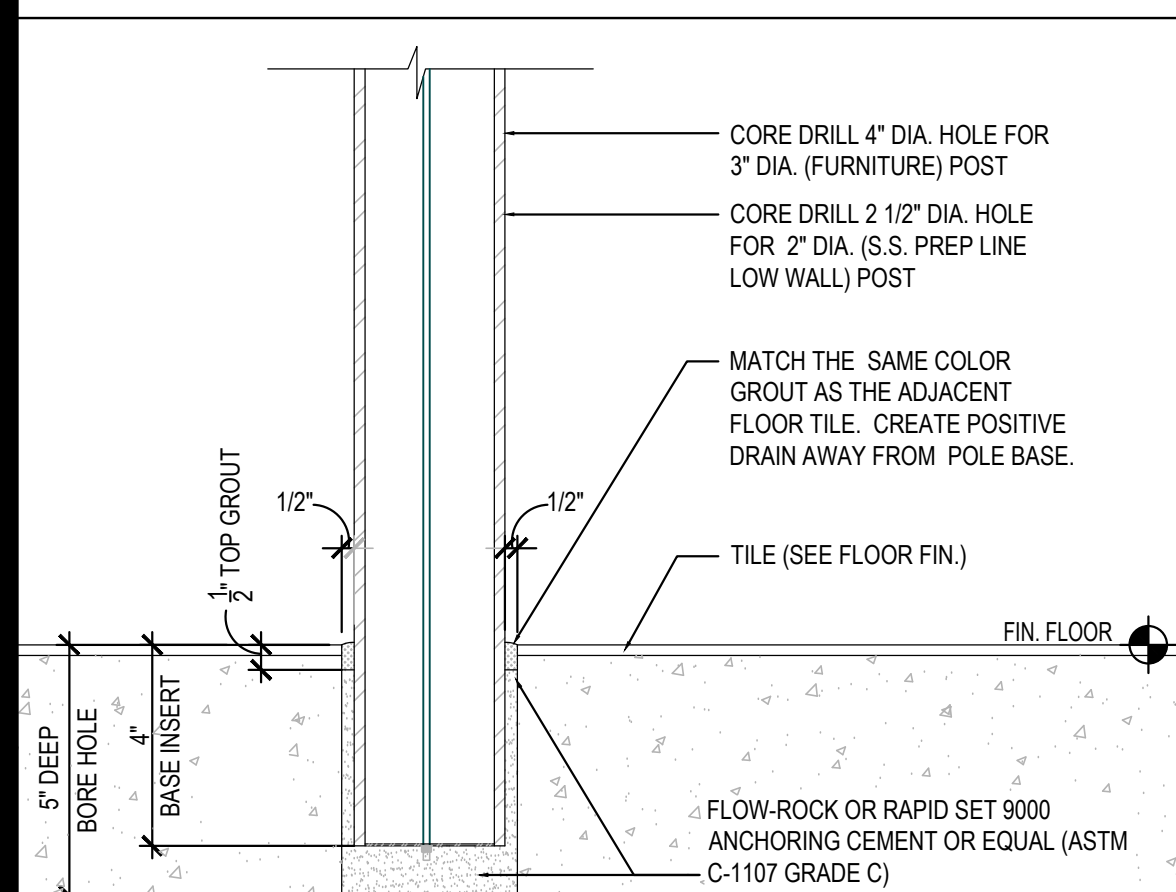
MGR. STATION & SAFE CURB

20

Scale= 1" = 1'-0" A-404



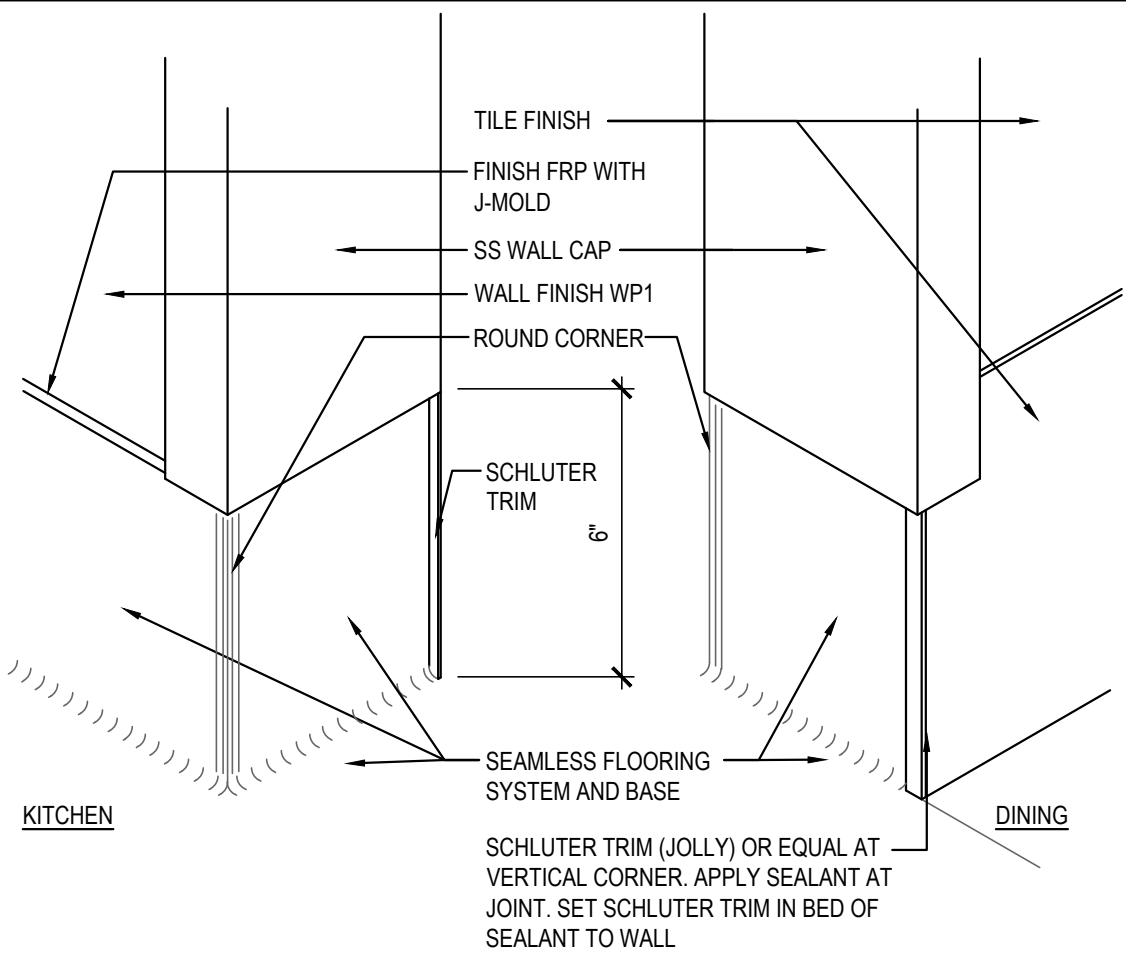
NOTE:
G.C. TO REFER CORE DRILL LOCATION ON SHEET A-109



STANDARD CORE DRILL TABLE

17

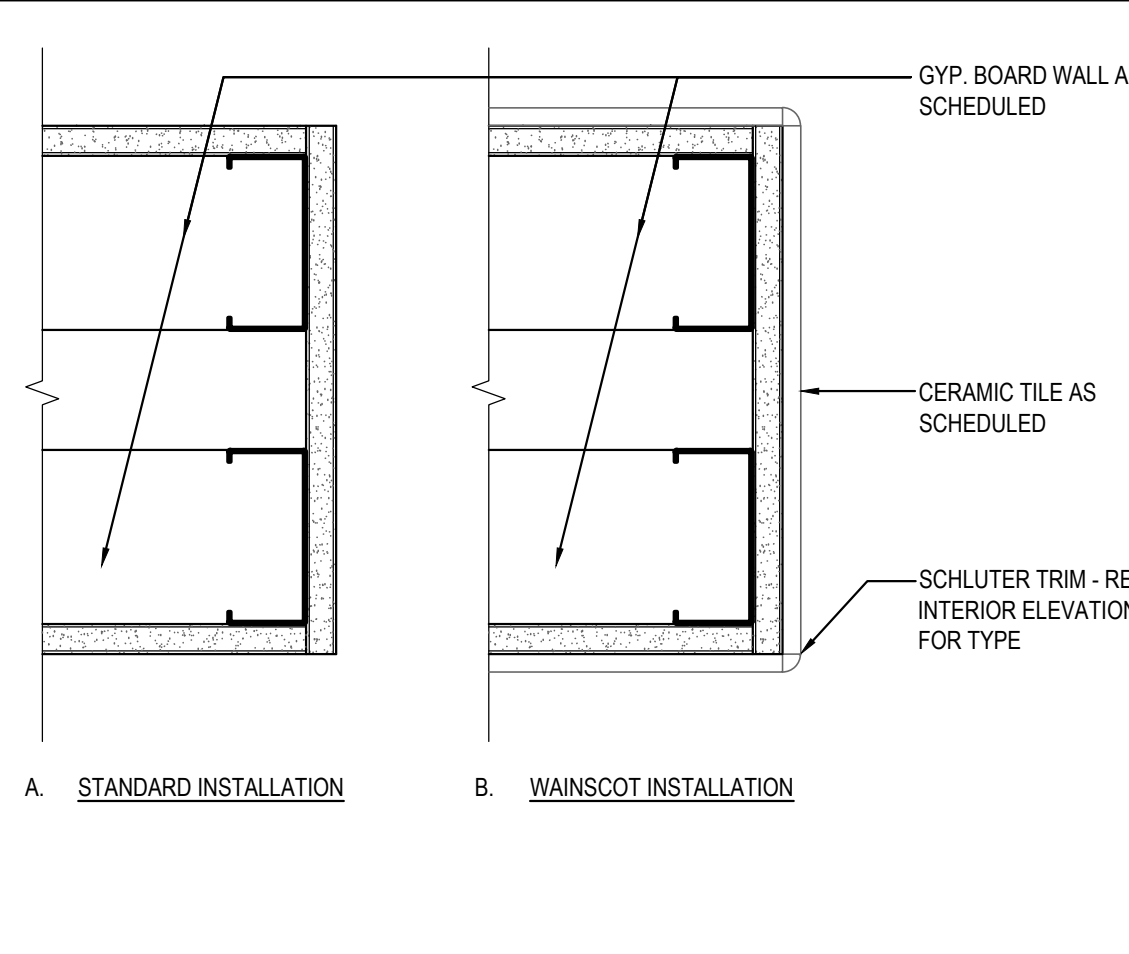
NTS A-404



WALL BASE

14

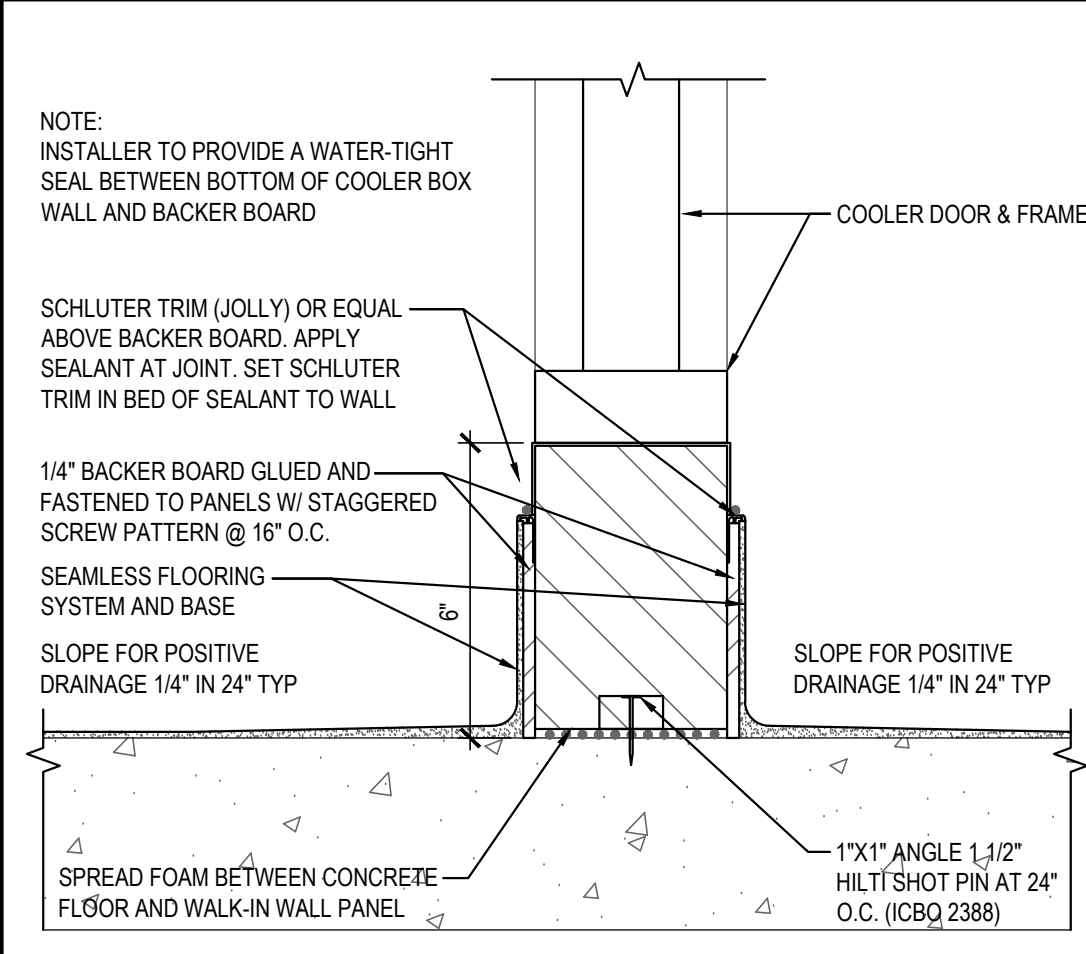
Scale= 3" = 1'-0" A-404



PLAN SECTION WALL DETAIL

11

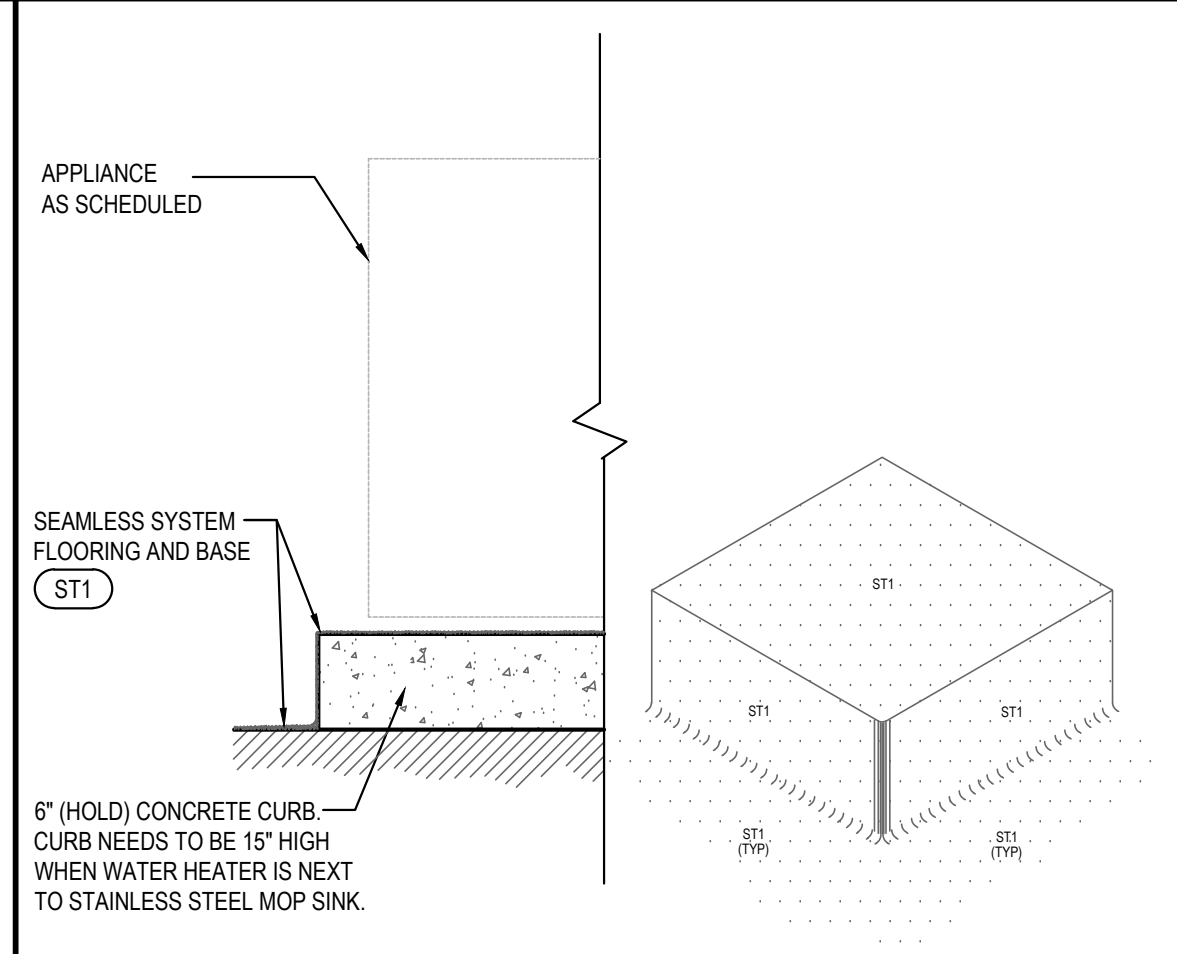
Scale= 3" = 1'-0" A-404



WALL BASE @ COOLER

7

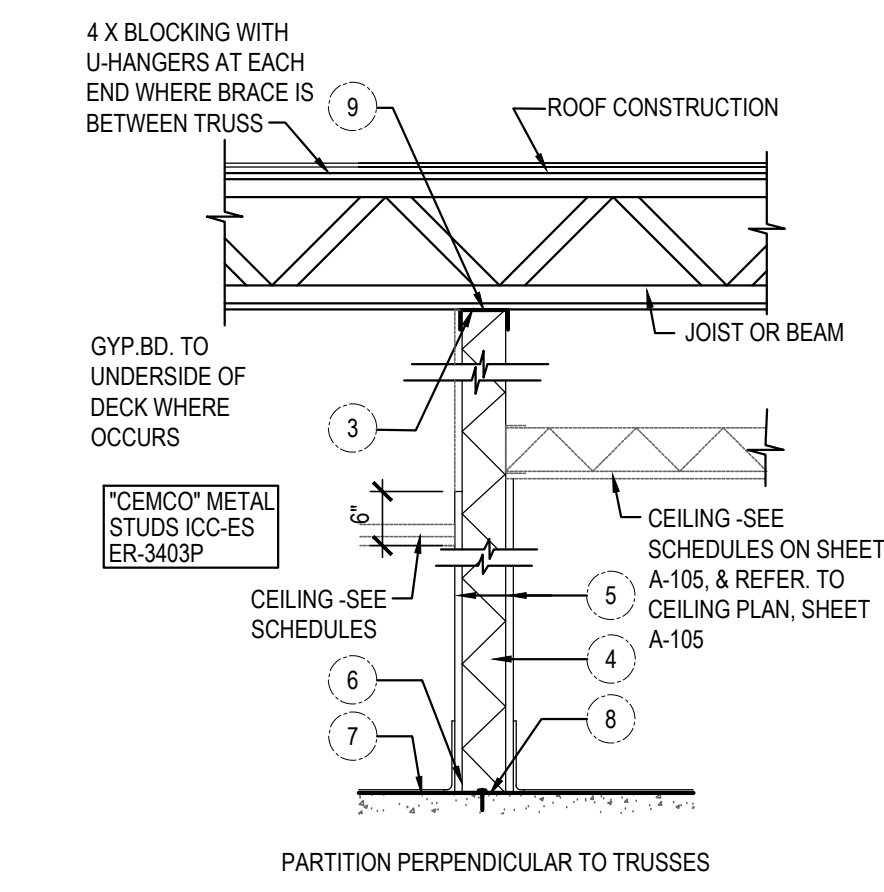
Scale= 3" = 1'-0" A-404



6" CURB DETAIL

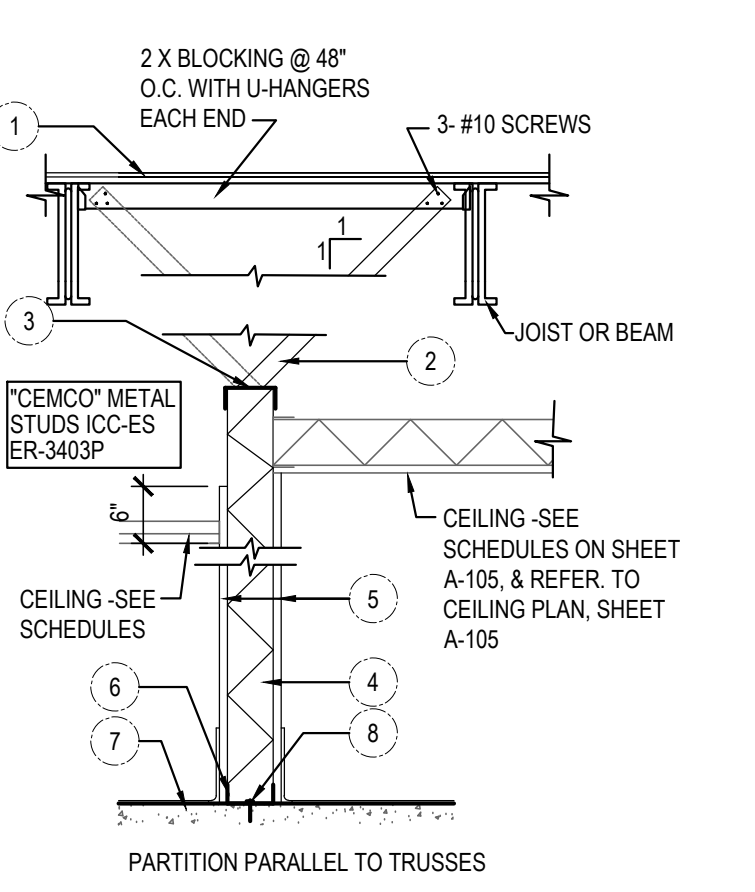
4

Scale= 1" = 1'-0" A-404



HEIGHT	METAL STUD SIZE & SPACING
UP TO 12'-0"	1/2" X 3/8" X 20 Ga @ 16" O.C.
BRIDGE LENGTH	SIZE
6'-0" OR UNDER	3/8" X 20 Ga
6'-1" TO 8'-0"	4" X 20 Ga

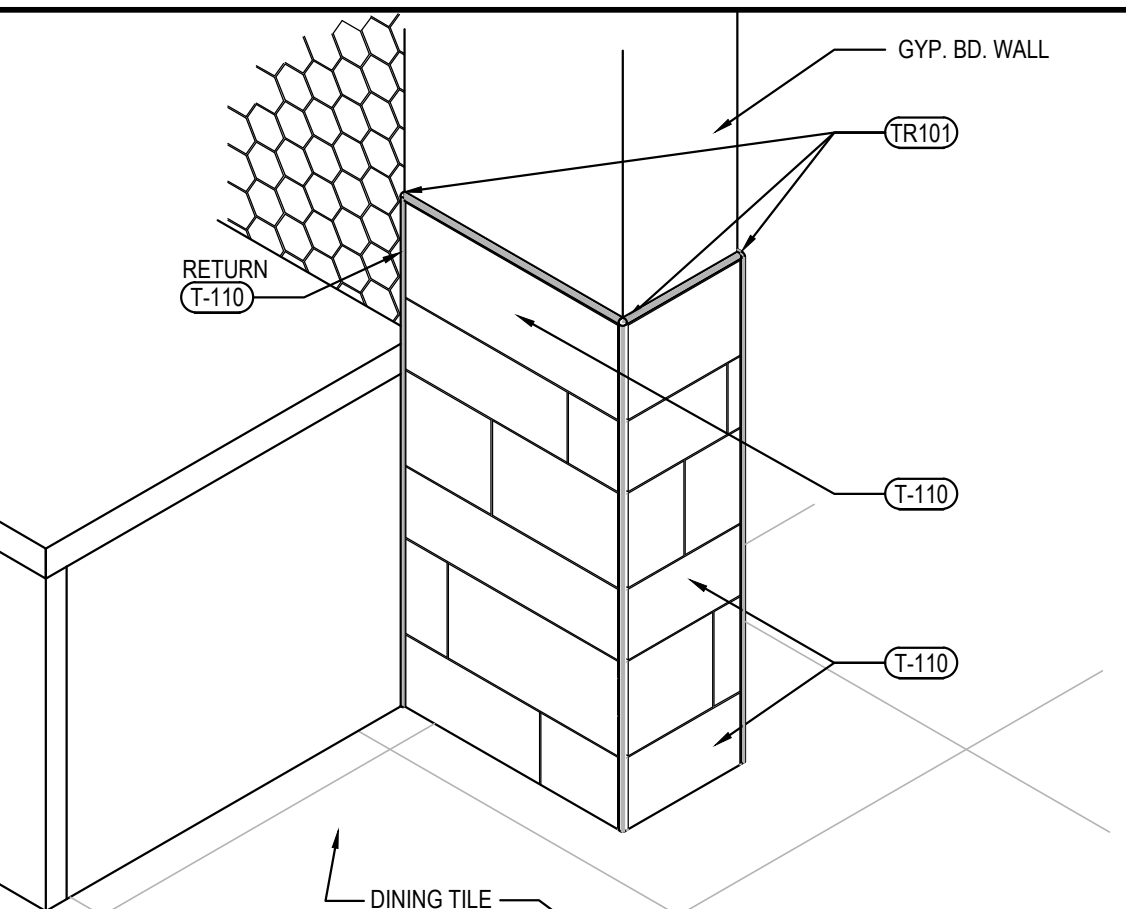
- STRUCTURAL MEMBER ABOVE
- BRACING @ 4'-0" O.C. STAGGERED W/ 3#10 EA. END
- 20 Ga. CONT. TRACK W/ 8# SCREW/STUD
- METAL STUDS (SEE SCHEDULE)
- SEE ARCHITECTURAL FOR FINISH
- CONT. 20 Ga. UNPUNCHED TRACK (1 1/16" FLANGE)
- CONCRETE SLAB
- HILTI POWDER ACTUATED FASTENER, 145 Ø x 1 1/2" PENETRATION @ 32" O.C. OR EQUAL
- 18 Ga. UNPUNCHED 3" DEEP LEG TRACK W/ 3 #10 SCREWS
- #8 SCREW PER STUD TYPICAL CONNECTION EA. FLANGE OF STUD TO STEEL TRACK (TOP & BOTT. TRACK)



PARTITION DETAILS

10

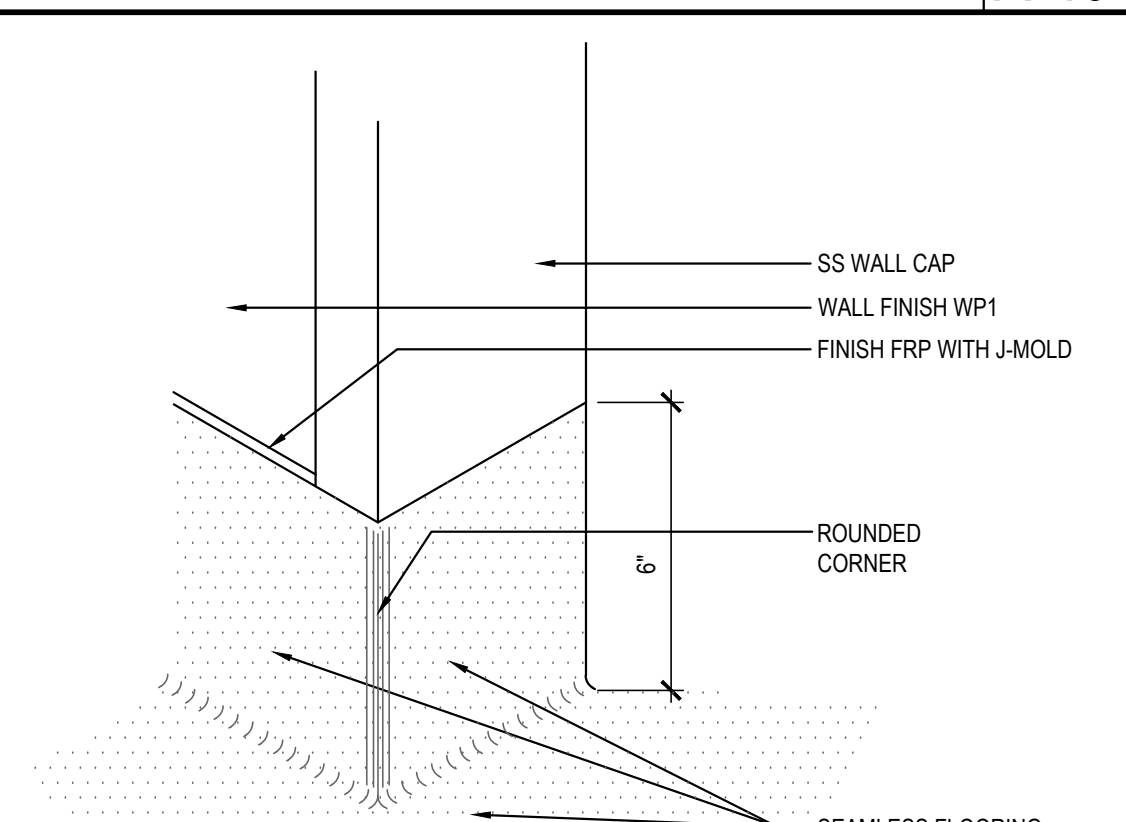
Scale= 3/4" = 1'-0" A-404



OUTSIDE CORNER ISOMETRIC

13

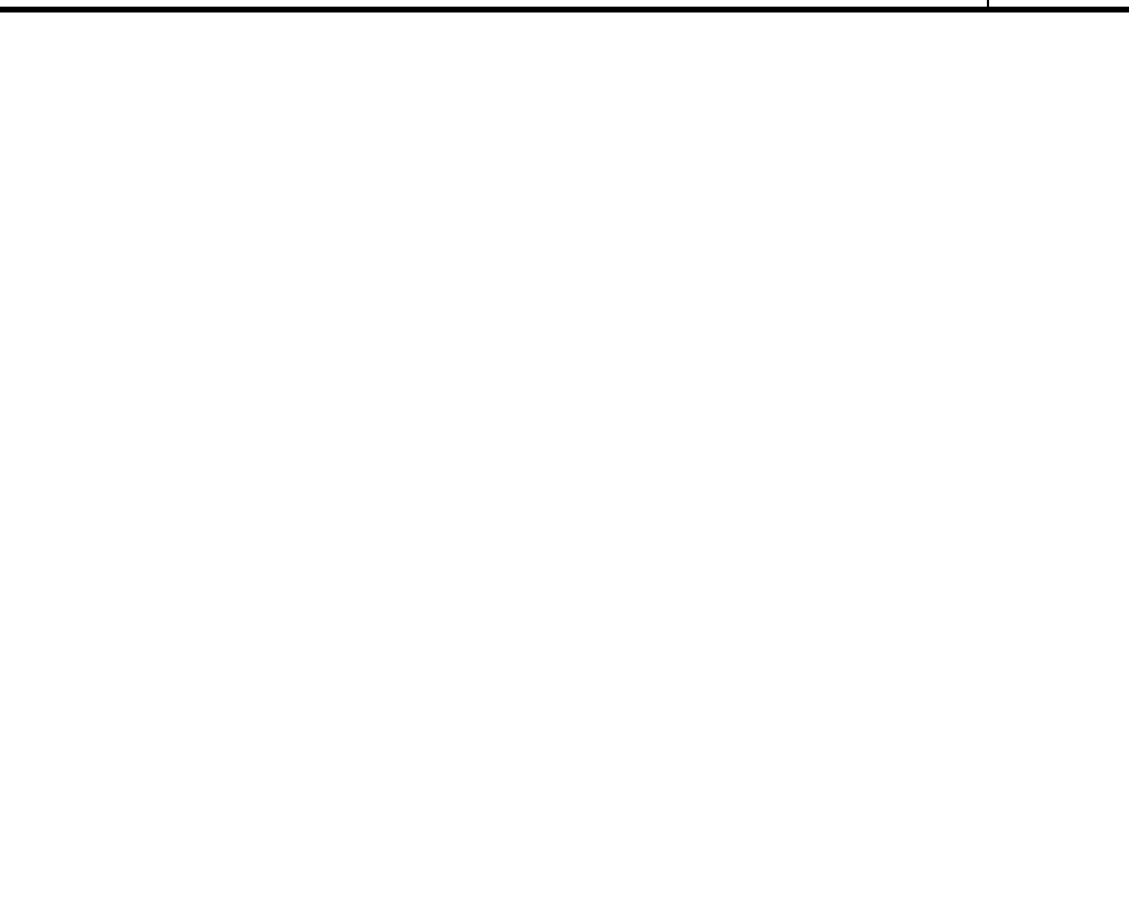
Scale= 3/4" = 1'-0" A-404



TYPICAL WALL BASE

12

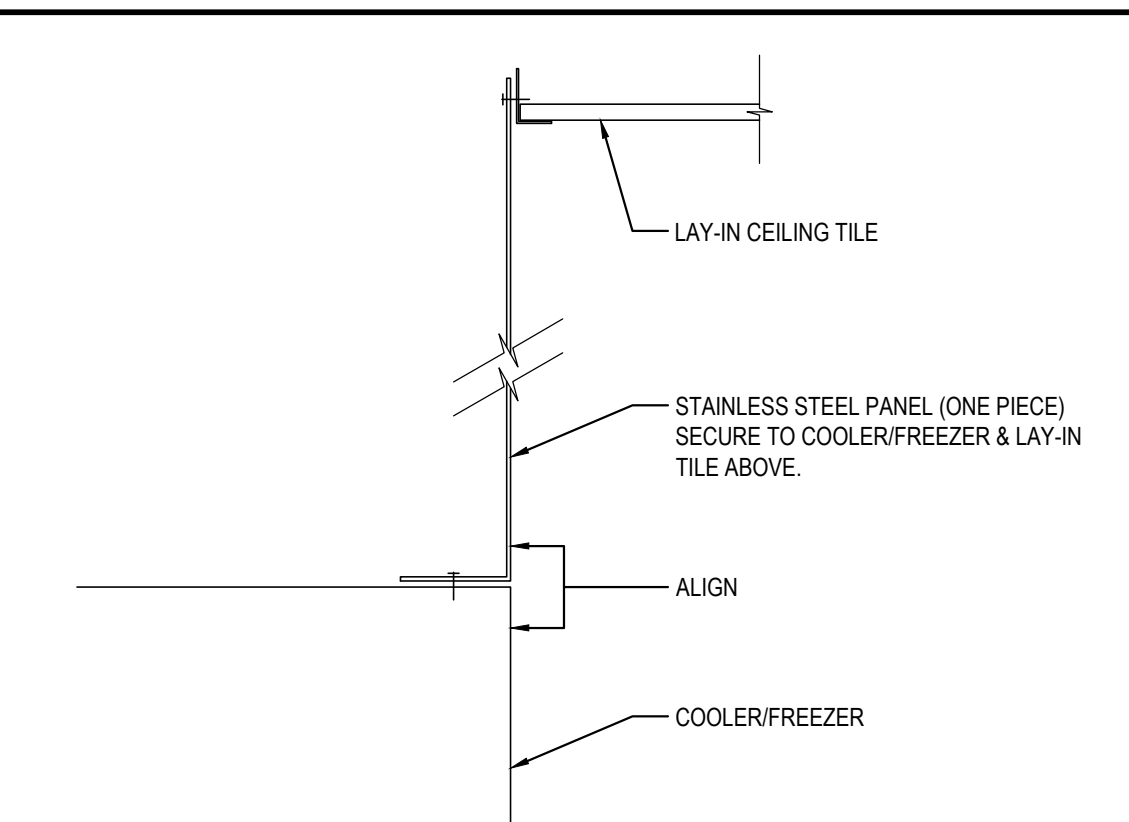
Scale= 3" = 1'-0" A-404



S.S. DETAIL @ EXHAUST HOOD

6

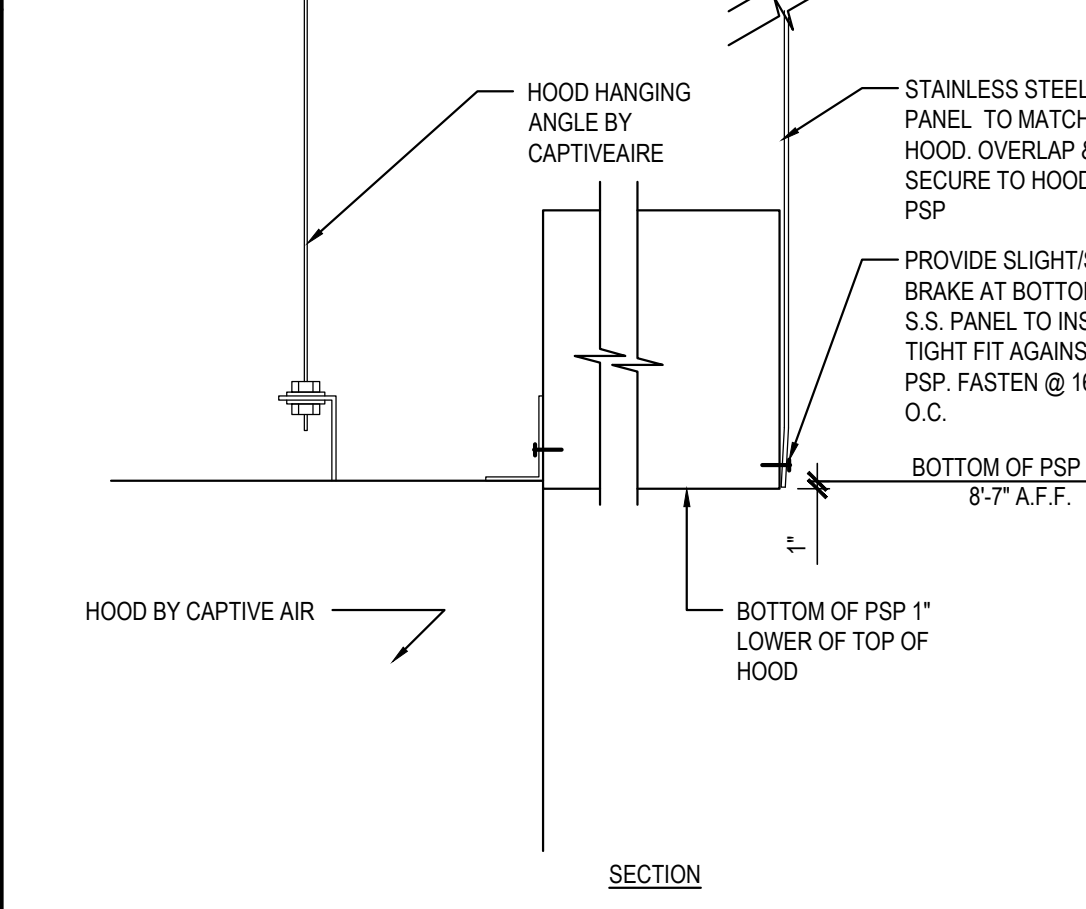
Scale= 1/2" = 1'-0" A-404



S.S. DETAIL @ COOLER / FREEZER

8

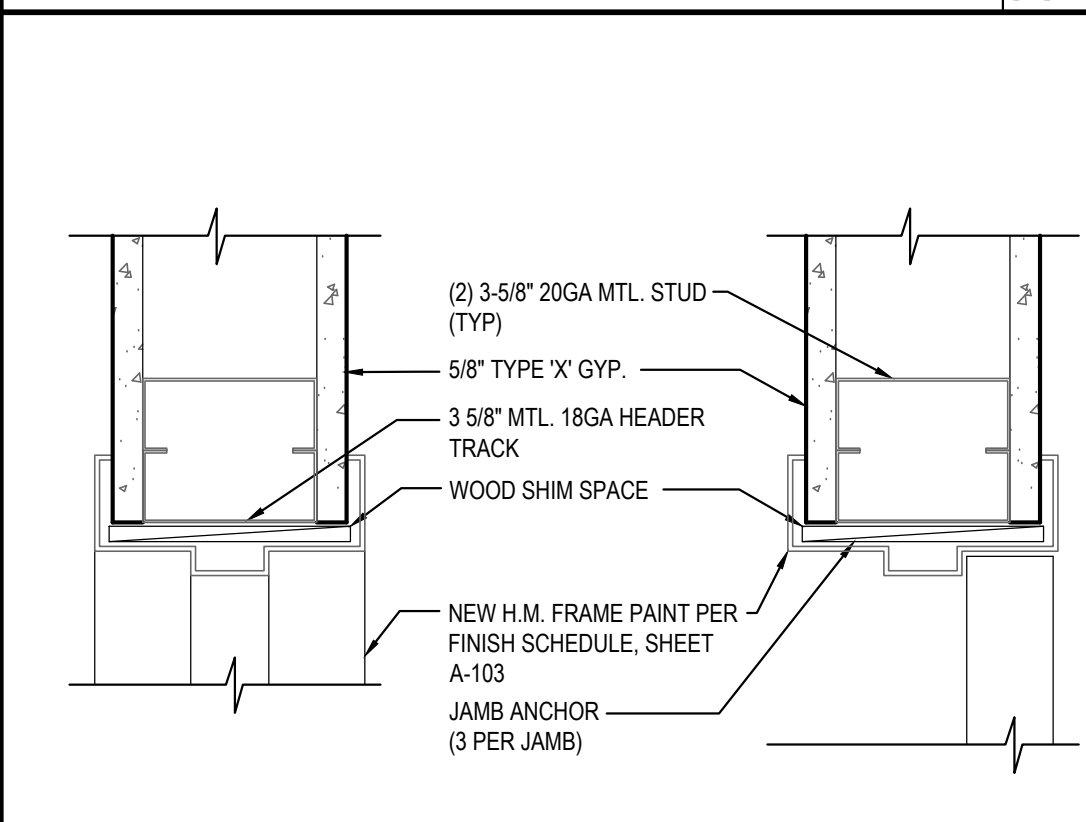
Scale= 1/2" = 1'-0" A-404



S.S. DETAIL @ EXHAUST HOOD

6

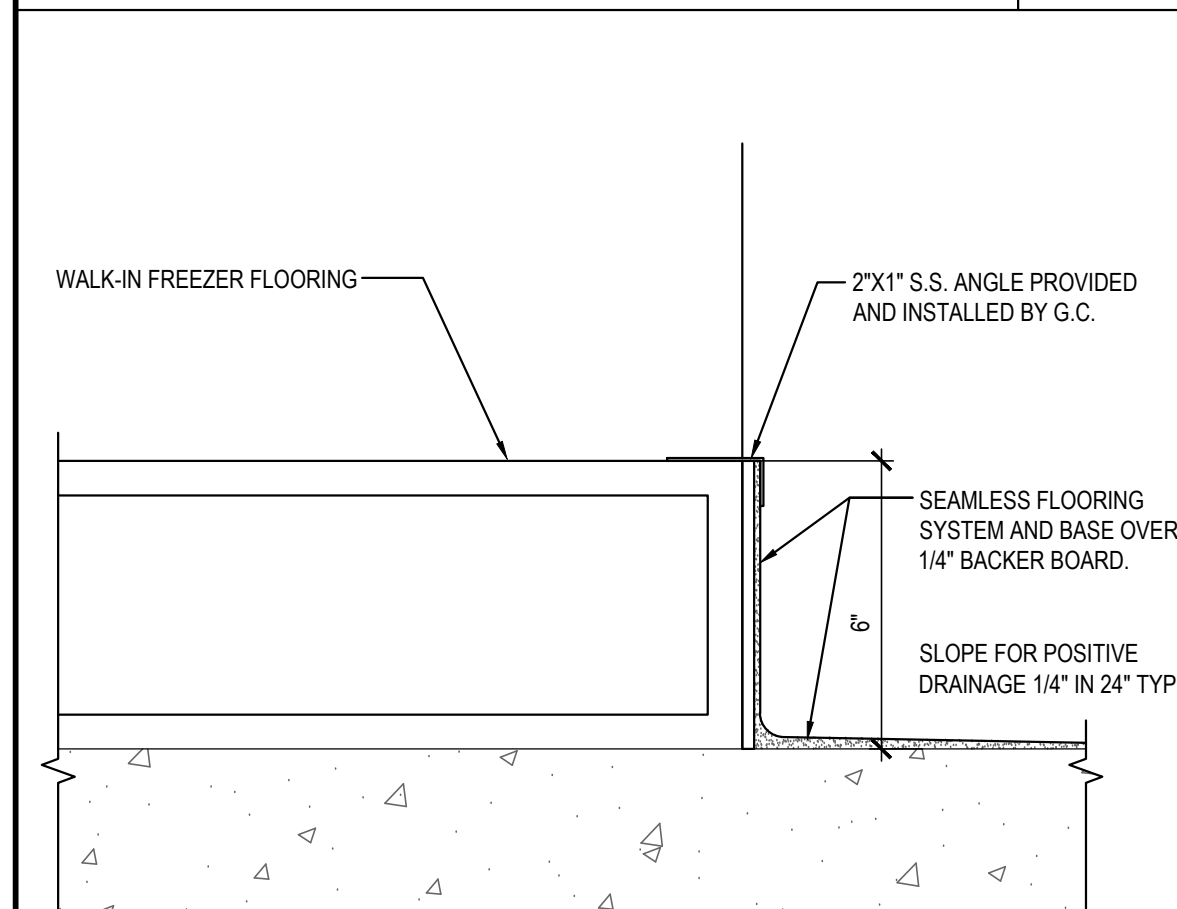
Scale= 1/2" = 1'-0" A-404



INTERIOR DOOR HEADER/JAMB

5

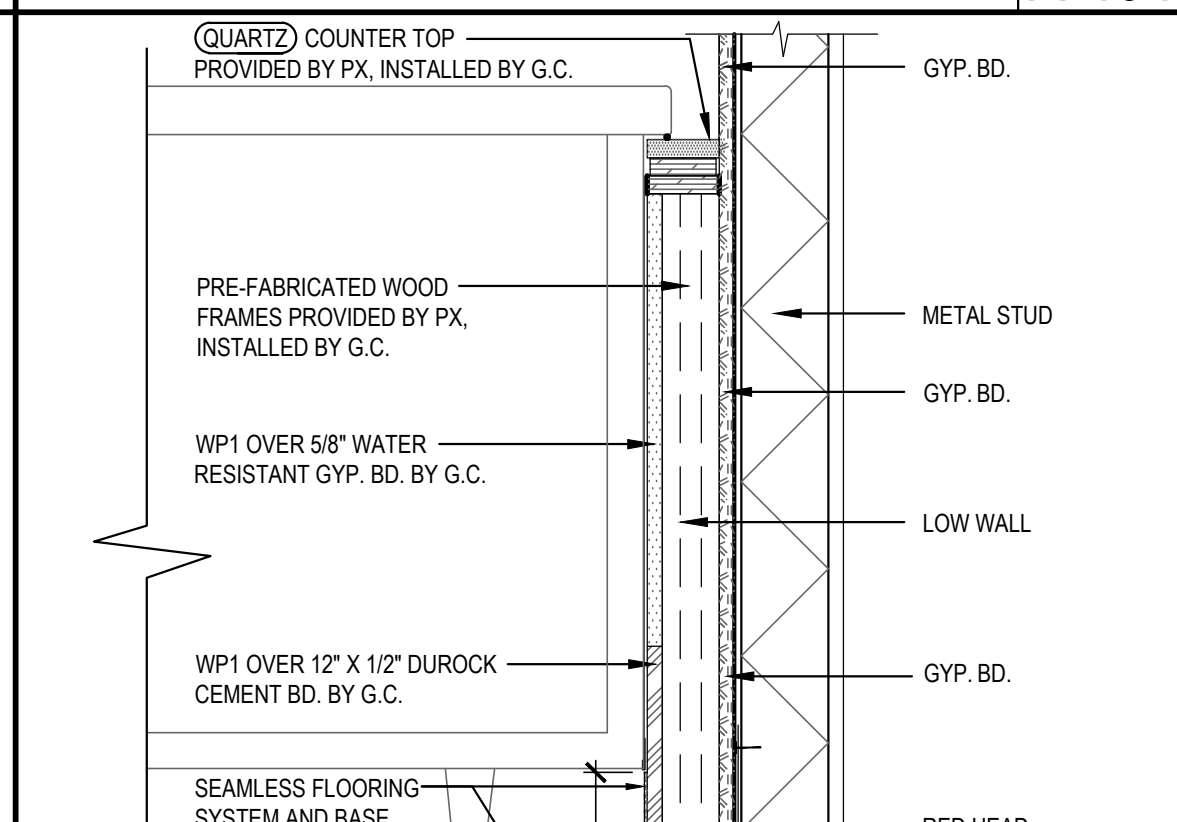
Scale= 3" = 1'-0" A-404



WALL BASE @ FREEZER

2

Scale= 3" = 1'-0" A-404



SERVICE COUNTER END DETAIL

1

Scale= 1 1/2" = 1'-0" A-404



PANDA EXPRESS, INC.
1683 Walnut Grove Ave.
Rosemead, California
91770
Telephone: 626.799.9696
Facsimile: 626.372.8288

All ideas, designs, arrangement and plans indicated or represented by this drawing are the property of Panda Express Inc. and were created for use on this specific project. None of these ideas, designs, arrangements or plans may be used by or disclosed to any person, firm, or corporation without the written permission of Panda Express Inc.

REVISIONS:

ISSUE DATE:

PEER REVIEW	01-27-2020
PR RESPONSE 1	02-21-2020
BUILDING PERMIT	03-11-2020

DRAWN BY: CSW

PANDA PROJECT #: D7446
ARCH PROJECT #: JCDT19-0314



PANDA EXPRESS
GREENBRIAR TOWN CENTER,
13059 LEE JACKSON MEMORIAL HWY
FAIRFAX, VA 22033

A-404

ARCHITECTURAL
DETAILS